



OFFICE OF MARK CHURCH
CHIEF ELECTIONS OFFICER & ASSESSOR-COUNTY CLERK-RECORDER
 REGISTRATION & ELECTIONS DIVISION

November 5, 2019
 Consolidated Municipal, School and Special District Election
DON'T DELAY, VOTE TODAY!

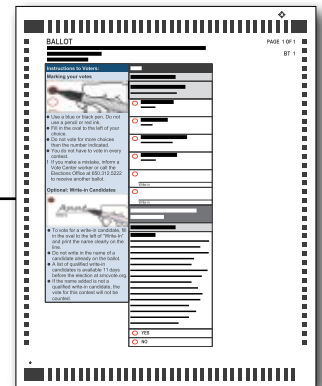
All registered voters, in areas holding elections, will be mailed their ballot in our new Vote by Mail envelope between October 7 and October 29.



Fully fill in the ovals to the left of your choice.



Voted ballots can be returned by mail, at any Ballot Drop Box or Vote Center.



Alternately, you may vote in person at any Vote Center. All Vote Centers are accessible and provide multilingual assistance.

The ballot marking tablet allows you to:

- Mark your ballot using a 21-inch touchscreen
- Adjust text size and contrast
- Select your preferred language (English, Spanish or Chinese)
- Utilize a range of accessibility devices



If you skip a section, or make fewer selections than you are able to make, the ballot marking tablet provides you with on-screen voting assistance.



Once your ballot is printed, you will deposit your ballot into the Ballot Box and then you receive your "I Voted" sticker!

At a Vote Center, we can also re-print the ballot you received in the mail, if needed.





OFFICE OF MARK CHURCH
CHIEF ELECTIONS OFFICER & ASSESSOR-COUNTY CLERK-RECORDER
REGISTRATION & ELECTIONS DIVISION

November 5, 2019
Consolidated Municipal, School and Special District Election

Will I receive a ballot in the mail for the November 5, 2019 election?

San Mateo County
Jurisdictions Participating in this Election

