

सेन मेटयो काउंटी कैलीफोर्नया मतदाता वकिल्प अधनियिम चुनाव प्रशासन योजना – मसौदा



मार्क चर्च का कार्यालय
मुख्य चुनाव अधिकारी और मूल्यांकनकर्ता-काउंटी क्लर्क-रिकॉर्डर
पंजीकरण एवं चुनाव प्रभाग

40 Tower Road, San Mateo, CA 94402 • फोन: 650.312.5222 • फैक्स: 650.312.5348
ईमेल: register@smcare.org • वेब: www.shapethefuture.org • हमें Twitter @smcvote पर फॉलो करे



OFFICE OF
**ASSESSOR-COUNTY CLERK-
RECORDER & ELECTIONS**
COUNTY OF SAN MATEO

MARK CHURCH
ASSESSOR-COUNTY CLERK-
RECORDER & CHIEF ELECTIONS OFFICER

31 दिसम्बर, 2017

प्रिय साथी मतदाताओ:

मुझे कैलीफोर्निया मतदाता विकल्प अधिनियम (California Voter's Choice Act) (सेनेट विधेयक 450) को लागू करने के लिए आपके समक्ष सेन मेटियो काउंटी के चुनाव प्रशासन की योजना (Election Administration Plan) का मसौदा पेश करने पर खुशी है। यह महत्वपूर्ण कानून सेन मेटियो सहित 14 देशों को जनवरी 2018 से सभी डाक द्वारा प्रेषित मतपत्र/मतदान केन्द्र चुनाव के रूप में कोई भी चुनाव कराने का अधिकार देता है। सेन मेटियो काउंटी को कैलीफोर्निया मतदाता विकल्प अधिनियम के प्रावधानों के अंतर्गत 5 जून, 2018 से राज्य-व्यापी प्रत्यक्ष प्राथमिक चुनाव कराने वाली राज्य की पहले पाँच काउंटियों में से एक होने पर गर्व है।

सेन मेटियो काउंटी की चुनाव प्रशासन योजना (EAP) का मसौदा जनता को कैलीफोर्निया मतदाता विकल्प अधिनियम के अंतर्गत चुनावों के प्रशासन संबंधी विस्तृत सूचना प्रदान के लक्ष्य के साथ तैयार किया गया था। EAP में काउंटी की शिक्षा और पहुँच योजना भी शामिल है जिसमें काउंटी की शिक्षा और पहुँच योजनाओं तथा खास तौर पर अपंगता और भाषायी अल्पसंख्यकों वाले मतदाताओं सहित सभी मतदाताओं तक पहुँच में बढ़ोतरी करने के हमारे प्रयासों की विस्तृत रूपरेखा भी दी गई है।

EAP का मसौदा जनता की सलाह से तैयार किया गया था तथा इसमें काउंटी के विकलांगता और भाषायी समुदायों के सदस्यों के साथ हमारी सार्वजनिक सुनवाईयों में सामने आई टिप्पणियाँ शामिल हैं। निम्नलिखित के संबंध में EAP के मसौदे पर चर्चा करने के लिए आप सभी सार्वजनिक सुनवाई में सादर आमंत्रित हैं:

बृहस्पतिवार 18 जनवरी, 2018, दोपहर 1 बजे
Chambers of the Board of Supervisors
Hall of Justice
400 County Center, Redwood City

आप सुनवाई से पहले ई-मेल, डाक और फोन द्वारा भी टिप्पणियाँ दे सकते हैं।

यदि मतदाता विकल्प अधिनियम या EAP के हमारे मसौदे के संबंध में आपके कोई प्रश्न हों, तो कृपया मुझसे या हमारे स्टाफ के किसी सदस्य से 650.312.5222 या registrar@smcare.org पर निःसंकोच संपर्क करें। हमें 18 जनवरी, 2018 को आपसे मिलने की पूरी आशा है।

भवदीय,

मार्क चर्च (Mark Church)

सेन मेटियो काउंटी
कैलीफोर्निया मतदाता विकल्प अधिनियम
विषय-सूची की तालिका

चुनाव प्रशासन योजना – मसौदा

संक्षिप्त विवरण	1
डाक मतपत्रों द्वारा मतदान	1
मतदान केन्द्र और मतपत्र डालने के स्थान	2
मतदान केन्द्र	2
मतदान केन्द्र का फॉर्मूला	2
मतपत्र डालने वाले बॉक्स	3
मतदान प्रौद्योगिकी	3
डिजिटल “मैंने मतदान किया” स्टिकर	4
वित्तीय प्रभाव	4
सार	5

मतदाता शिक्षा और पहुँच योजना

संक्षिप्त विवरण	9
गैर-अंग्रेजी वरीयता वाले मतदाता	9
विकलांग मतदाता	9
भागीदारी में विषमताओं पर ध्यान देना	10
प्रत्यक्ष मतदाता संपर्क	10
जन-सेवा संबंधी घोषणाएं	10
बजट	11

परिशिष्ट

प्रस्तावित मतदान केन्द्र और मतपत्र डालने वाले स्थान	15
प्रस्तावित मतदान केन्द्रों के स्थान	17
मतपत्र डालने वाले बॉक्स के स्थान	18
प्रस्तावित मतदान केन्द्र और मतपत्र डालने वाले स्थानों का नक्शा	19
मतदान केन्द्र का लेआउट (प्रस्तावित)	21
मतदान के लिए पहुँच संबंधी सलाहकार समिति एवं भाषा तक पहुँच संबंधी सलाहकार समिति	25
मतदान के लिए पहुँच संबंधी सलाहकार समिति	27
भाषा तक पहुँच संबंधी सलाहकार समिति	28

नगर चुनाव अधिकारी.....	29
सामुदायिक साझेदार.....	33
सामुदायिक समारोह.....	45
आगामी सामुदायिक समारोह	47
2015-2016 शीत/बसंत के समारोह कैलेंडर का नमूना.....	48
मीडिया साझेदार.....	49
नक्शे.....	53
सार्वजनिक परिवहन मार्ग.....	55
डाक के उपयोग से कम मतदान करने वाले क्षेत्र.....	56
जनसंख्या.....	57
भाषायी अल्पसंख्यकों वाले समुदाय.....	58
विकलांग मतदाता.....	59
घरेलू वाहन का स्वामित्व.....	60
गरीबी में जीवन-निर्वाह करने वाले लोगों के क्षेत्र.....	61
मतदान करने के लिए गैर-पंजीकृत पात्र मतदाताओं वाले क्षेत्र.....	62
कैलीफोर्निया मतदाताओं का चयन संबंधी अधिनियम कानून	63

सेन मेटियो काउंटी

चुनाव प्रशासन योजना - मसौदा

संक्षिप्त विवरण

सेनेट विधेयक 450, जिसे कैलीफोर्निया मतदाता विकल्प अधिनियम (Voter's Choice Act - VCA) के नाम से भी जाना जाता है, को 29 सितम्बर, 2016 को हस्ताक्षर करके कानून का रूप दिया गया जो सेन मेटियो सहित 14 काउंटियों को अधिकार देता है कि वे 2018 से सभी डाक द्वारा प्रेषित मत-पत्र/मतदान केन्द्र चुनाव के रूप में कोई भी चुनाव करा सकते हैं। यह कानून चुनाव सुधारों के उस व्यापक संग्रह का भाग था जो मतदाताओं की भागीदारी में बढ़ोतरी करने, मतदाता की कार्यसंलग्नता बढ़ाने, तथा मतदान के विकल्पों का विस्तार करने, सेन मेटियो काउंटी और भाग लेने वाले क्षेत्राधिकारों में चुनाव कराने के तरीकों में मूलभूत परिवर्तन करने के लिए बनाया गया था।

सेन मेटियो काउंटी कैलीफोर्निया राज्य में डाक-द्वारा प्रेषित मतपत्रों वाले सभी चुनाव कराने में अग्रणी रही है जिसमें हमारे 67% से अधिक पंजीकृत मतदाता डाक वाले मतदाताओं के रूप में स्थायी मतदान का चुनाव करते हैं। VCA का मार्ग विधान सभा विधेयक (Assembly Bill) 2018 के प्राधिकार के अंतर्गत 3 नवंबर, 2015 को कराए गए मेल द्वारा प्रेषित सभी मतपत्र वाले सफल चुनाव द्वारा प्रभावित हुआ। राज्य विधानसभा और राज्य सचिव के समक्ष प्रस्तुत हमारी AB 2028 की रिपोर्ट में शामिल अनेक सिफारिशें और कार्यपद्धतियाँ VCA में शामिल की गईं।

VCA के अंतर्गत काउंटी के मुख्य चुनाव अधिकारी से यह अपेक्षित है कि वह नए कानून के अधीन चुनावों के प्रशासन के लिए चुनाव प्रशासन योजना (EAP) का मसौदा तैयार करे। EAP का यह मसौदा हमारे सामुदायिक साझेदारों और हितधारकों के परामर्श से तैयार किया गया सहयोगात्मक प्रयास है। हमारे भाषायी और विकलांग समुदायों के साथ 12 अक्टूबर, 2017 और 16 अक्टूबर, 2017 को आयोजित हमारी सार्वजनिक सुनवाईयों से सामने आईं अनेक सिफारिशें इसमें शामिल की गईं हैं।

हमारी VCA की उस सार्वजनिक सुनवाई में EAP के मसौदे पर अतिरिक्त टिप्पणियाँ देने के लिए जनता को एक बार फिर आमंत्रित किया जाता है जो बृहस्पतिवार, 18 जनवरी, 2018 को दोपहर 1 बजे आयोजित की जाएगी। सार्वजनिक सुनवाई Chambers of the Board of Supervisors, 400 County Center, Redwood City में आयोजित की जाएगी। सार्वजनिक सुनवाई और 14-दिवसीय टिप्पणी अवधि की समाप्ति पर, काउंटी के अंतिम EAP को औपचारिक रूप से अंगीकार किया जाएगा तथा मंजूरी के लिए राज्य सचिव (Secretary of State) के समक्ष पेश किया जाएगा।

VCA के चुनाव मॉडल में निरंतर सुधार करने के लिए, कानून की अपेक्षा है कि मुख्य चुनाव अधिकारी पहला चुनाव कराने के दो वर्ष के भीतर अतिरिक्त सार्वजनिक सुनवाईयाँ कराए तथा उसके बाद EAP में किए गए संशोधनों पर विचार करने के लिए प्रत्येक चार वर्षों में यह सुनवाई कराए।

सेन मेटियो काउंटी का EAP का मसौदा VCA को लागू करने के संबंध में जनता को विभिन्न प्रकार की बहुमूल्य जानकारी प्रदान करता है। EAP का यह मसौदा डाक द्वारा प्रेषित मतपत्र प्रक्रिया द्वारा मतदान, काउंटी के मतदान केन्द्रों के प्रस्तावित स्थानों तथा मतपत्र डालने के स्थानों, उपयोग की जाने वाली चुनाव प्रौद्योगिकी, का संक्षिप्त विवरण, तथा हमारी मतदाता शिक्षा एवं पहुँच योजना का वर्णन उपलब्ध कराएगा।

डाक मतपत्रों द्वारा मतदान

VCA मॉडल के अंतर्गत, सभी पंजीकृत मतदाताओं को चुनाव से 29 दिन पहले मतपत्र वापस भेजने के लिए डाक-खर्च

चुकाए गए लिफाफे के साथ मतपत्र डाक द्वारा भेजा जाएगा। मतदाता डाक से प्रेषित मतपत्र द्वारा मतपत्र का अनुरोध अंग्रेजी के अलावा किसी अन्य भाषा में कर सकते हैं। विकलांग मतदाता, विदेश में रह रहे मतदाता, सैन्य कर्मचारी, तथा सैनिकों की पत्नियाँ/पति सेन मेटियो काउंटी की पहुँच-योग्य डाक-द्वारा-मतदान प्रणाली का लाभ उठा सकते हैं जो पात्र मतदाताओं के लिए किसी पर्सनल कम्प्यूटर की स्क्रीन पर पढ़ने योग्य फॉर्मेट में अपने मतपत्र तक पहुँच बनाना और अपना मत डालना संभव बनाती है।

मतदान केन्द्र और मतपत्र डालने के स्थान

VCA पूरी काउंटी में मतदान केन्द्रों के स्थल और मतपत्र डालने वाले स्थलों के विस्तृत मानदण्ड और फॉर्मूले निर्धारित करता है। कानून की यह अपेक्षा है कि मतदान केन्द्र और मतपत्र डालने के स्थल विकलांग मतदाताओं के लिए पहुँच-योग्य हों, जनसंख्या केन्द्रों, सार्वजनिक परिवहन के निकट स्थित हों तथा कम-आय वाले और भाषायी अल्पसंख्यक समुदायों के निकट स्थित हों।

सेन मेटियो काउंटी मतदान पहुँच सलाहकार समिति (County Voting Accessibility Advisory Committee - VAAC) और भाषायी पहुँच सलाहकार समिति (Language Accessibility Advisory Committee - LAAC) के परामर्श से मतदान केन्द्र और मतपत्र डालने के स्थलों का चयन किया गया था। भौगोलिक सूचना पद्धति (GIS) मैपिंग सॉफ्टवेयर और अमेरिकी जनगणना डेटा का भी उपयोग यह सुनिश्चित करने के लिए किया गया था कि स्थल मतदाताओं के सबसे अधिक नजदीक हों।

मतदान केन्द्र: मतदान केन्द्र मतदान स्थलों के समान काम करेंगे जिससे मतदाताओं के लिए स्वयं जाकर मतपत्र डालना संभव होता है, चाहे यह कागज़ पर हो, ई-स्लेट पर हो या विकलांग पहुँच यूनिट पर। फिर भी, मतदान स्थलों के विपरीत, मतदाता अपने मतपत्र पूरे काउंटी में किसी भी मतदान केन्द्र में डाल सकते हैं। मतदाता मतदान करने के लिए पंजीकरण कराने या अपने पंजीकरण को नवीनतम रूप देने के लिए किसी भी मतदान केन्द्र पर भी जा सकेंगे। पंजीकरण की समाप्ति (चुनाव से 14 दिन पहले) से पहले पंजीकरण न कराने वाले मतदाता किसी भी मतदान केन्द्र पर मतदान करने के लिए सशर्त पंजीकरण (Conditionally Register to Vote - CVR) करा पाएंगे और चुनाव के दिन अस्थायी मतपत्र डाल पाएंगे।

मतदान केन्द्रों की काउंटी की चुनाव प्रबंधन प्रणाली (Election Management System - "EMS") तक सुरक्षित पहुँच होगी, जिससे मतदान केन्द्र के स्टाफ के लिए प्रत्येक मतदाता के मतदान की स्थिति का वास्तविक समय में सत्यापन करना संभव होगा।

मतदान केन्द्रों को तीन विकलांग पहुँच यूनिटों सहित 10 ई-स्लेट इलेक्ट्रॉनिक मतदान मशीनों से लैस किया जाएगा। सभी मतदान केन्द्र ADA-का पालन करते हैं, तथा चुनाव कर्मचारी विशेष आवश्यकताओं वाले मतदाताओं की सहायता करने के लिए मौके पर मौजूद रहेंगे।

मतदान में रुकावट को रोकने, तथा उचित रूप से चुनाव-कार्य किया जाना सुनिश्चित करने के लिए सुरक्षा और आकस्मिकता योजनाएं लागू की जाएंगी। जब मतदान केन्द्रों में कार्य न किया जा रहा हो, तब जाँचे गए और टैम्पर-स्पष्ट सीलों और सुरक्षित भण्डारण सुविधाओं जैसे संस्थापित सुरक्षा प्रोटोकॉलों के माध्यम से स्थल और उपकरण को सुरक्षित किया जाएगा।

परिशिष्ट में मतदान केन्द्र की रूपरेखा का नमूना रेखाचित्र दिया गया है।

मतदान केन्द्र का फॉर्मूला: मतदान केन्द्र सिलसिलेवार खोले जाएंगे जिससे चुनाव नजदीक आने पर अधिक संख्या में

मतदान केन्द्र चालू हो जाएंगे। काउंटी चुनाव से 29 दिन पहले दक्षिण सेन फ्रांसिस्को, सेन मेटियो और रेडवूड सिटी में तीन मतदान केन्द्र खोलने की अपनी प्रथा जारी रखेगी। चुनाव से 10 दिन पहले अतिरिक्त मतदान केन्द्र खोले जाएंगे, तथा सभी मतदान केन्द्र चुनाव से तीन दिन पहले कार्य आरंभ करते हुए पूरी तरह कार्यचालित होंगे।

VCA ने पूरी काउंटी में मतदान केन्द्रों के स्थलों का निर्धारण करने के लिए निम्नलिखित फॉर्मूला निर्धारित किया है। ये संख्याएं जून 2018 के चुनाव के लिए 390,000 पंजीकृत मतदाताओं के अनुमान पर आधारित हैं:

चुनाव के दिन से पहले के दिन	प्रति मतदान केन्द्र पंजीकृत मतदाताओं की संख्या	जनता के लिए पहुँच-योग्य मतदान केन्द्र
10	50,000	8
3	10,000	39

सभी मतदान केन्द्र सप्ताहांतों और अवकाशों सहित चुनाव से 10 दिन पहले कार्य आरंभ करते हुए कम-से-कम आठ घंटे प्रतिदिन खुले रहेंगे, तथा चुनाव के दिन सुबह 7:00 बजे से शाम 8:00 बजे तक खुले रहेंगे।

प्रत्येक मतदान केन्द्र में पाँच चुनाव कर्मचारियों तक का स्टाफ होगा। काउंटी भाषायी सहायता उपलब्ध कराने के लिए प्रत्येक मतदान केन्द्र में कम-से-कम एक स्पैनिश बोलने वाले और एक चीनी बोलने वाले व्यक्ति को नियुक्त करने का प्रयास करेगी।

मतपत्र डालने वाले बॉक्स: 5 जून, 2018 के चुनाव के लिए मतपत्र डालने के अनुमानित कुल 26 बॉक्सों के लिए काउंटी में प्रत्येक 15,000 पंजीकृत मतदाताओं के लिए कम-से-कम एक मतपत्र डालने वाले बॉक्स की आवश्यकता होती है। मतपत्र डालने के ये बॉक्स चुनाव के दिन से कम से कम 28 दिन पहले उपलब्ध होंगे तथा कार्य के नियमित समय के दौरान खोले जाएंगे। 40 टॉवर रोड, सेन मेटियो में पंजीकरण और चुनाव प्रभाग के बाहर मतपत्र डालने का बॉक्स तथा निर्धारित किए जाने वाले तीन अतिरिक्त स्थल रोजाना चौबीस घंटे खुले रहेंगे।

सेन मेटियो काउंटी में सभी 20 सिटी और टाउन हॉलों में उनके नियमित कार्यसमय के दौरान मतपत्र डालने के लिए तालाबंद मतपत्र बॉक्स उपलब्ध होगा। मतदाता अपना मतदान किया गया मतपत्र किसी मतदान केन्द्र, डाकघर या USPS डाक-बक्से में भी डाल सकते हैं।

मतदान केन्द्र और मतपत्र डालने के स्थल के नक्शे सहित प्रस्तावित मतदान केन्द्र और मतपत्र डालने के स्थलों की सूची परिशिष्ट में शामिल है।

मतदान प्रौद्योगिकी

काउंटी 5 जून, 2018 के दौरान सभी मतदान केन्द्रों में हमारी मौजूदा हार्ट इन्टरसिविक इलेक्ट्रॉनिक मतदान प्रणाली तथा ई-स्लेट मतदान मशीनें लगाएगी। प्रत्येक मतदान केन्द्र में, पर्सनल कम्प्यूटरों का नेटवर्क एक सुरक्षित कनेक्शन के माध्यम से काउंटी की चुनाव प्रबंधन प्रणाली (EMS) से जोड़ा जाएगा। काउंटी का EMS कैलीफोर्निया राज्य, वोटकैल द्वारा प्रशासित मतदाता के पंजीकरण डेटाबेस से जुड़ा है। इससे मतदाता पंजीकरण डेटा तक पहुँच मिलेगी, जिससे मतदाता केन्द्र का स्टाफ प्रत्येक मतदाता के पंजीकरण और मतदाता स्थिति का निर्धारण वास्तविक समय में कर पाएगा। यह प्रणाली 3 नवंबर, 2015 को सभी डाक से भेजे गए मतपत्र चुनाव में सफलतापूर्वक प्रयोग की गई थी।

माँग-पर मतपत्र प्रिंटिंग प्रिंटरों का प्रयोग पहली बार काउंटी के चुनावों में मतदाताओं को उनके मतदान स्थानों के लिए विशेष मतपत्र शैलियाँ उपलब्ध कराने के लिए किया जाएगा। इसके अलावा, माँग-पर मतपत्र प्रिंटिंग प्रिंटर उन

अतिरिक्त मतपत्रों की खरीद और प्रिंटिंग को न्यूनतम करते हैं जो मतपत्र की कठिन शैलियों को समायोजित करने के लिए आवश्यक हैं।

डिजिटल “मैंने मतदान किया” स्टिकर

चुनाव के दिन मतदाता-जनता से अनुरोध की जाने वाली सबसे अधिक प्रसिद्ध वस्तुओं में से एक हमारा “मैंने मतदान किया” स्टिकर है जो गर्व से यह पहचान कराता है कि मतदाता ने चुनाव में भाग लिया है। “मैंने मतदान किया” स्टिकर इतने प्रसिद्ध हैं कि हमारे अनेक डाक द्वारा मतदान करने वाले स्थायी मतदाता (Vote by Mail - VBM) मात्र अपने स्टिकर प्राप्त करने के लिए मतदान स्थलों पर अपने मतपत्र डालते हैं।

“मैंने मतदान किया” स्टिकरों की लोकप्रियता को देखते हुए, हमारी काउंटी एक डिजिटल “मैंने मतदान किया” स्टिकर तैयार करेगी जिसे कॉपी किया जा सकता है और मतदाताओं के सोशल मीडिया पृष्ठों पर पेस्ट किया जा सकता है तथा उनके ऑनलाइन डिजिटल हस्ताक्षरों में शामिल किया जा सकता है। इससे मतदाताओं के लिए दुनिया को गर्व से यह बताना संभव हो जाएगा कि उन्होंने चुनाव में मतदान किया है। “मैंने मतदान किया” के डिजिटल स्टिकर से मतदाताओं द्वारा उनके पिछले चुनावों में भाग लिए जाने के वर्षों का भी पता चलेगा। पिछले चुनावों में उनके द्वारा मतदान किए जाने वाले लगातार वर्षों की संख्या दर्शाने वाला विशेष बैनर तैयार किया जाएगा। इससे लोकतांत्रिक प्रक्रिया में भागीदारी के वर्षों से मतदाताओं की गर्व से अलग पहचान बनेगी।

“मैंने मतदान किया” के डिजिटल स्टिकर तक लिंक www.shapethefuture.org पर “मेरा पंजीकरण देखें/मेरी चुनाव सामग्री तक पहुँच बनाएं/मेरी मतदाता सूचना पुस्तिका देखें/मेरे मतपत्र का पता लगाएं” के माध्यम से पहुँच बनाई जा सकती है।

वित्तीय प्रभाव

VCA का वित्तीय प्रभाव तथा संबंधित कानूनी अधिदेश इस समय ज्ञात नहीं हैं।

5 जून, 2018 राज्य-व्यापी प्रत्यक्ष प्रारंभिक चुनाव नए सभी डाक द्वारा-प्रेषित मतपत्र/मतदान केन्द्र मॉडल तथा जून 2018 के चुनाव के लिए पूरी तरह लागू किए जाने वाले नए चुनाव कानूनों - दोनों के संबंध में, अपनी तरह का पहला चुनाव होगा। राज्यपाल के प्रारंभिक चुनाव जैसे बड़े चुनाव में एक ही समय पर ऑनलाइन आने वाले इन नए कानूनों के संयुक्त प्रभाव से राज्य-व्यापी स्तर पर काउंटियों के चुनाव खर्चों में बढ़ोतरी हो सकती है। सकारात्मक पक्ष में, समय के साथ VCA का प्रभाव ऐसा पड़ना चाहिए कि इससे इन नए कानूनी अधिदेशों से जुड़े बहुत-से अतिरिक्त खर्चों में कमी आए।

चुनाव के खर्चों पर प्रभाव डालने वाला हमारा एक प्रमुख सरोकार सेनेट विधेयक 415 (SB 415), कैलीफोर्निया मतदाता भागीदारी अधिकार अधिनियम को लागू करना होगा। SB 415 ने 2020 तक विषम-संख्या वाले वर्ष के चुनाव सम-संख्या वाले वर्ष के चुनावों में आयोजित करने वाले अधिकार-क्षेत्र का प्रस्ताव रखा। इसके परिणामस्वरूप नवंबर 2018 के चुनाव में भागीदारी करने वाले अधिकार-क्षेत्रों की संख्या में भारी बढ़ोतरी होगी। इस बदलाव से सम-संख्या वाले वर्ष के चुनावों में बहुत अधिक बढ़ोतरी होगी जिसके परिणामस्वरूप बड़ी संख्या में नमूना मतपत्र के पर्चे, लंबे और अधिक जटिल सरकारी मतपत्र, तथा मतपत्रों की अधिक शैलियाँ सामने आएंगी।

AB 1436 सशर्त मतदाता पंजीकरण कानून (AB 1436 Conditional Voter Registration Law) और AB 1461 DMV नया मोटर मतदाता कानून (AB 1461 DMV New Motor Voter Law) से मतदाता पंजीकरण तथा बूथों पर आने वाले मतदाताओं की कुल संख्या में बढ़ोतरी होगी। नए मतदाताओं के शामिल होने से चुनावों के प्रशासन में अतिरिक्त खर्च बढ़ेगा।

इसके अलावा, स्वयं VCA शुरुआत में शुरुआती खर्चों का वहन करेगा जिससे कम अवधि में चुनाव के खर्चों में बढ़ोतरी हो सकती है। मतदान केन्द्र लंबे समय तक खुले रहेंगे और इनमें काउंटी कर्मचारियों का स्टाफ परंपरागत बूथ कार्यकर्ताओं की तुलना में अधिक दिहाड़ी दर पर काम करेगा। मतदान केन्द्र के स्टाफ के लिए जटिलता का प्रबंधन करने तथा मतदान केन्द्रों की प्रौद्योगिकी संबंधी अपेक्षाओं के अतिरिक्त प्रशिक्षण की भी आवश्यकता होगी। मतदान केन्द्रों और काउंटी के मतदाता पंजीकरण डेटाबेस के बीच विविध सुरक्षित कनेक्शन सृजित करने के परिणामस्वरूप नए उपकरण, ढाँचे, परीक्षण, और सहयोग के कारण खर्चों में बढ़ोतरी होगी। हमारा अनुमान है कि अंत में इन खर्चों की भरपाई मतदान मशीनों, कामगारों की संख्या और पूँजीगत खर्चों में भारी कमी से हो जाएगी। भविष्य के चुनावों में पहुँच और मतदाता शिक्षा की भी कम आवश्यकता होगी, क्योंकि मतदाता नए चुनाव मॉडल से अधिक परिचित होंगे, जिससे आगे चलकर खर्च कम हो जाएंगे।

सार

कैलीफोर्निया मतदाता विकल्प अधिनियम एक ऐसा महत्वपूर्ण कानून है जो कैलीफोर्निया राज्य में कराए जाने वाले चुनावों के तरीके में मौलिक बदलाव लाएगा। 3 नवंबर, 2015 काउंटी स्तरीय स्थानीय समेकित सभी डाक द्वारा प्रेषित मतपत्र चुनाव में सेन मेटियो काउंटी का सफल अनुभव हमें VCA के सभी डाक द्वारा प्रेषित मतपत्र/मत केन्द्र चुनाव मॉडल के अंतर्गत सफलतापूर्वक चुनाव कराने के लिए विशिष्ट आधार प्रदान करता है। चुनाव कराने के इस नए तरीके का सफल रूप से लागू किया जाना काउंटी के मतदाताओं और भागीदारी करने वाले अधिकार-क्षेत्रों को अनेक लाभ और अवसर प्रदान करता है। सभी डाक द्वारा प्रेषित मतपत्र/मत केन्द्र चुनाव मॉडल के परिणामस्वरूप बढ़ी हुई कुशलताओं और कम हुए बिल-सूची के खर्चों के माध्यम से स्कूली जिले, नगर-पालिकाएं और विशेष जिले लाभान्वित होते हैं। नए चुनाव मॉडल से मतदाता भागीदारी को बढ़ाने, विकलांग मतदाताओं को अधिक पहुँच प्रदान करने, हमारी मतदान प्रणालियों और प्रौद्योगिकी में सुधार करने, तथा हमारे चुनावों की ढाँचागत सुरक्षा को सशक्त करने का सकारात्मक प्रभाव द्वारा पड़ेगा।

सेन मेटियो काउंटी को कैलीफोर्निया मतदाता विकल्प अधिनियम को सफल रूप से लागू करने के साथ उत्कृष्टता और नवीन-परिवर्तन की हमारी परंपरा जारी रखने की पूरी उम्मीद है।

सेन मेटियो काउंटी
कैलीफोर्नया मतदाता वकिल्प अधनियिम

मतदाता शक्िषा
और
पहुँच योजना



मार्क चर्च का कार्यालय
मुख्य चुनाव अधिकारी और मूल्यांकनकर्ता-काउंटी क्लर्क-रिकॉर्डर
पंजीकरण एवं चुनाव प्रभाग

40 Tower Road, San Mateo, CA 94402 • फोन: 650.312.5222 • फैक्स: 650.312.5348
ईमेल: register@smcare.org • वेब: www.shapethefuture.org • हमें Twitter @smcvote पर फॉलो करे

मतदाता शिक्षा एवं पहुँच योजना

संक्षिप्त विवरण

कैलीफोर्निया मतदाता विकल्प अधिनियम (VCA) की काउंटी से यह अपेक्षा है कि वह ऐसी मतदाता शिक्षा एवं पहुँच योजना विकसित करे जिससे मतदाता को मतदान केन्द्र और मतपत्र डालने वाले स्थलों सहित VCA के सभी पहलुओं, तथा विकलांग मतदाताओं और गैर-अंग्रेजी वरीयता वाले मतदाताओं की विशेष जानकारी मिलती हो। इन समूहों की ओर से आवाज उठाने वाले या इन्हें सेवाएं प्रदान करने वाले सामुदायिक संगठनों और व्यक्तियों के साथ सार्वजनिक बैठकें आयोजित की जाएंगी। काउंटी स्पैनिश, चीनी, फिलिपिनो, और कोरियन भाषा के वक्ताओं के लिए उपलब्ध अनुवादकों के साथ विभिन्न सार्वजनिक शिक्षा कार्यशालाएं आयोजित करेगी। काउंटी द्वारा आयोजित सभी सार्वजनिक समारोह ADA की पहुँच में होंगे।

काउंटी ने मतदाता शिक्षा एवं पहुँच योजना विकसित करने के लिए अपनी मतदान पहुँच सलाहकार समिति (VAAC) और भाषा पहुँच सलाहकार समिति (LAAC) के साथ मिलकर काम किया, जो समीक्षा और मंजूरी के लिए राज्य सचिव के कार्यालय में प्रस्तुत की जाएगी।

3 नवंबर, 2015 के सभी डाक द्वारा प्रेषित मतपत्र चुनाव से पहले हमारे सामुदायिक पहुँच और सार्वजनिक जागरूकता प्रयासों के समान ही, काउंटी नए चुनाव मॉडल के प्रति जागरूकता बढ़ाने के लिए सामुदायिक संगठनों, एजेन्सियों, स्कूलों और अन्य समूहों तक पहुँच बनाएगी। VCA को लागू करने की घोषणा करने के लिए इसे प्रत्यक्ष डाक, समाचार मीडिया, सोशल मीडिया, तथा जनता तक पहुँच मीडिया के इस्तेमाल से व्यापक मीडिया अभियान के साथ जोड़ा जाएगा। यह अभियान टोल-फ्री मतदाता सहायता हॉटलाइन को बढ़ावा देगा, मतदाताओं को एक पहुँच-योग्य फॉर्मेट में अपने मतपत्र प्राप्त करने के तरीके संबंधी जानकारी देगा, तथा सुनने में असमर्थ व्यक्तियों को बहु-भाषायी सेवाएं और पहुँच प्रदान करेगा।

आगामी सामुदायिक समारोह और सामुदायिक साझेदारों की जानकारी परिशिष्ट में उपलब्ध है।

गैर-अंग्रेजी वरीयता वाले मतदाता

इन पहुँच प्रयासों के भाग के रूप में, काउंटी अंग्रेजी के अलावा किसी अन्य भाषा का इस्तेमाल करने का विकल्प चुनने वाले मतदाताओं तक अपनी पहुँच जारी रखेगी और इसमें विस्तार करेगी।

सेन मेटियो काउंटी के निवासियों को सेवा प्रदान करने वाली सभी मीडिया को वितरित समाचार-विज्ञप्ति में टोल-फ्री मतदाता सहायता हॉटलाइन की घोषणा की जाएगी, जो बहु-भाषायी सेवाएं उपलब्ध कराएगी। इसके अलावा, सहायता हॉटलाइन को बढ़ावा देने के लिए स्पैनिश, चीनी, फिलिपिनो, और कोरियन मीडिया में विज्ञापनों की खरीद की जाएगी।

मतदान केन्द्र जिनके लिए भाषा सहायता की आवश्यकता हो, की पहचान अमेरिकी जनगणना डेटा के माध्यम से तथा काउंटी के LAAC द्वारा उपलब्ध कराई जाने वाली सूचना सहित सार्वजनिक सूचना प्रक्रिया के माध्यम से की जाएगी।

गैर-अंग्रेजी भाषा मीडिया सहित, मीडिया साझेदार परिशिष्ट में दिए गए हैं।

विकलांग मतदाता

लोकतांत्रिक प्रक्रिया में पहुँच में बढ़ोतरी करने के लिए काउंटी की विकलांग मतदाताओं के साथ काम करने की स्थायी प्रतिबद्धता है। पंजीकरण और चुनाव प्रभाग (Registration & Elections Division) की वेबसाइट

www.shapethefuture.org ई-स्लेट विकलांग पहुँच यूनिटों, मेल प्रणाली द्वारा पहुँच-योग्य मत, मतदान केन्द्रों तथा VAAC के लिए ADA की पहुँच-योग्य अपेक्षाओं संबंधी विवरण सहित विकलांग मतदाताओं के लिए सूचना और संसाधन उपलब्ध कराती है।

सेन मेटियो काउंटी के निवासियों को सेवा प्रदान करने वाले सारे मीडिया को वितरित समाचार-विज्ञप्ति में टोल-फ्री मतदाता सहायता हॉटलाइन की घोषणा की जाएगी, जो सुनने में असमर्थ व्यक्तियों को पहुँच प्रदान करेगी।

विकलांग मतदाता काउंटी से अपने घर पर मतपत्र भेजने, या अपने घर पर इलेक्ट्रॉनिक मतदान मशीन मंगवाने का अनुरोध कर सकते हैं। विकलांग मतदाता डाक प्रणाली द्वारा पहुँच-योग्य मत के माध्यम से अपने मतपत्र डाउनलोड करने के लिए और उन पर निशान लगाने के लिए अपने पर्सनल कम्प्यूटर का भी इस्तेमाल कर सकते हैं। मतदान केन्द्र का स्टाफ सड़क के किनारे मतदान के लिए कागज के मतपत्र का प्रतिस्थापन या ई-स्लेट विकलांग पहुँच यूनिट भी ला सकता है।

भागीदारी में विषमताओं पर ध्यान देना

काउंटी कम-आय वाले मतदाताओं और विकलांग व्यक्तियों को सेवा प्रदान करने वाली एजेन्सियों के समन्वयकों और स्टाफ को अनुरोध करने पर निम्नलिखित एजेन्सियों, लेकिन इन तक ही सीमित नहीं, से सूचना और प्रशिक्षण प्रदान करेगी: कैलफ़ोर्निया कैलवर्क्स, मेडि-कैल, महिलाएं, शिशु, एवं बच्चे (WIC), आंतरिक सहयोगी सेवाएं, कवर्ड कैलीफोर्निया, कैलीफोर्निया का स्वास्थ्य लाभ आदान-प्रदान, पुनर्वास-व्यावसायिक सेवा विभाग, स्वतंत्र रहन-सहन केन्द्र, विकासात्मक सेवा क्षेत्रीय केन्द्र विभाग, बघिर पहुँच कार्यालय से ठेका करने वाले कार्यालय, राज्य और काउंटी के मानसिक एवं व्यावहारात्मक स्वास्थ्य विभाग, तथा उन विभागों के साथ ठेके के अधीन सेवाएं प्रदान करने वाले प्राइवेट प्रेक्टीशनर।

भौगोलिक रूप से दूर स्थित ऐसे क्षेत्रों, जहाँ किसी निर्धारित स्थल तक पहुँचना संभव न हो, का समाधान करने के लिए मोबाइल मतदान केन्द्र तैनात किया जा सकता है।

प्रत्यक्ष मतदाता संपर्क

मतदाताओं तक काउंटी से सीधा संपर्क 3 नवंबर, 2015 तक डाक द्वारा प्रेषित सभी मतपत्र चुनाव के बारे में मतदाताओं को सूचित करने का सबसे अधिक प्रभावी तरीका था।

नमूना मतपत्र एवं सरकारी मतदाता सूचना पुस्तिका तथा डाक मतपत्र द्वारा मतदान संबंधी सूचना के अलावा, नए चुनाव मॉडल के मतदाताओं को जानकारी देने के लिए तीन पोस्टकार्डों की योजना है। डाक द्वारा पहली सूचना में नए मतदान मॉडल के सभी पंजीकृत मतदाताओं को जानकारी दी जाएगी। डाक द्वारा दूसरी सूचना उन मतदाताओं के लिए होगी जिन्हें डाक से आगामी मतपत्र भेजने के बारे में सतर्क करने तथा मतदान केन्द्र की सूचना प्रदान करने के लिए उनके मतपत्र डाक द्वारा पहले प्राप्त नहीं हुए हैं। डाक द्वारा तीसरी सूचना, चुनाव से पहले के अंतिम दिनों में, उन मतदाताओं के लिए होगी जिन्होंने अपना मतपत्र डाक से नहीं भेजा है, इसमें उन्हें ऐसा करने के लिए याद दिलाया जाएगा और प्रतिस्थापन मतपत्र प्राप्त करने संबंधी और मतदान केन्द्र के स्थलों संबंधी जानकारी प्रदान की जाएगी।

जन-सेवा संबंधी घोषणाएं

TV के लिए जन-सेवा घोषणा (PSA) की स्क्रिप्ट बहरे या कम सुनने वाले मतदाताओं के लिए विज़ुअल या क्लोज़्ड-कैप्शन के लेख के अनुरोध के साथ वितरित की जाएगी। रेडियो स्क्रिप्ट में उन मतदाताओं तक पहुँचने में सहायता करने के लिए उनकी सहायक वेबसाइटों पर सूचना पोस्ट करने के लिए स्टेशनों से किया गया अनुरोध शामिल होगा।

प्रिंट और ऑनलाइन PSA के लिए, तथा सरकारी और सामुदायिक साझेदारों के लिए उनके सोशल मीडिया और समाचार-पत्रों में प्रयोग के लिए काउंटी से आर्टवर्क उपलब्ध कराया जाएगा। प्रिंट किए गए PSA के साथ नेत्रहीन और ऐसे लोगों जिन्हें कम दिखाई देता है, के लिए ऑडियो सहित किन्हीं संबद्ध वेबसाइटों पर घोषणा पोस्ट करने का अनुरोध भेजा जाएगा।

काउंटी PSA के लिए स्क्रिप्टों सहित सेन मेटियो काउंटी को सेवा प्रदान करते हुए स्पैनिश, चीनी, टेगालॉग, और कोरियन भाषा में मीडिया आउटलेट उपलब्ध कराएगी। स्क्रिप्टें मतदाताओं को आगामी चुनाव की सूचना देंगी तथा टोल-फ्री मतदाता सहायता हॉटलाइन को बढ़ावा देगी। आर्टवर्क भी उपलब्ध होगा।

बजट

5 जून, 2018 के राज्य-व्यापी प्रत्यक्ष प्रारंभिक चुनाव में मतदाता शिक्षा एवं पहुँच के लिए 241,000 डॉलर आबंटित किए गए हैं। इसके अलावा, पंजीकरण एवं चुनाव प्रभाग (Registration & Elections Division) रेखीय एवं पहुँच सामग्रियाँ, जन-प्रस्तुतियाँ तैयार करने और सामुदायिक पहुँच समारोहों के लिए आंतरिक सहयोग प्रदान करेगा। इस बजट से समाचार-पत्रों, टेलीविजन, रेडियो और सोशल मीडिया में विज्ञापनों की खरीद संभव बनेगी। इन निधियों का एक भाग भाषा अनुवाद और ब्रेल उत्पादन के लिए आबंटित किया जाएगा। पहुँच के बजट में पंजीकृत मतदाताओं तक प्रत्यक्ष मेलिंग का प्रिंटिंग और डाक खर्च शामिल नहीं हैं। इस उद्देश्य के लिए 5 जून, 2018 के राज्य-व्यापी प्रत्यक्ष प्राथमिक चुनाव बजट में 200,000 डॉलर राशि की अतिरिक्त निधियों को जोड़े जाने की आवश्यकता होगी।

इसके अलावा, मतदाता विकल्प कैलीफोर्निया (Voter's Choice California) गठबंधन ने VCA पहुँच कार्यक्रमों में समुदाय आधारित संगठनों की सहायता सुनिश्चित करने के लिए उन्हें अनुदान राशियों की पेशकश की है। मतदाता विकल्प कैलीफोर्निया गठबंधन और उनके अनुदान सहायता कार्यक्रमों से संबंधित जानकारी <https://voterschoice.org/> पर प्राप्त की जा सकती है।

CALIFORNIA VOTER'S CHOICE ACT ADDENDA



Office of Mark Church
Chief Elections Officer & Assessor-County Clerk-Recorder

**CALIFORNIA VOTER'S CHOICE ACT
PROPOSED VOTE CENTERS
&
BALLOT DROP-OFF BOX LOCATIONS**



**Office of Mark Church
Chief Elections Officer & Assessor-County Clerk-Recorder**

Location of Proposed Vote Centers

Open 29 Days before Election through Election Day

Redwood City	Assessor-County Clerk-Recorder
South San Francisco	South San Francisco Main Library
San Mateo	Registration & Elections Division

Open 10 Days before Election through Election Day

East Palo Alto	City Hall, Community Room
Half Moon Bay	Ted Adcock Community Center
Daly City	Daly City City Hall
San Bruno	San Bruno City Hall, Conference Room 115
San Mateo	Mid-Peninsula Boys & Girls Club

Open 3 Days before Election through Election Day

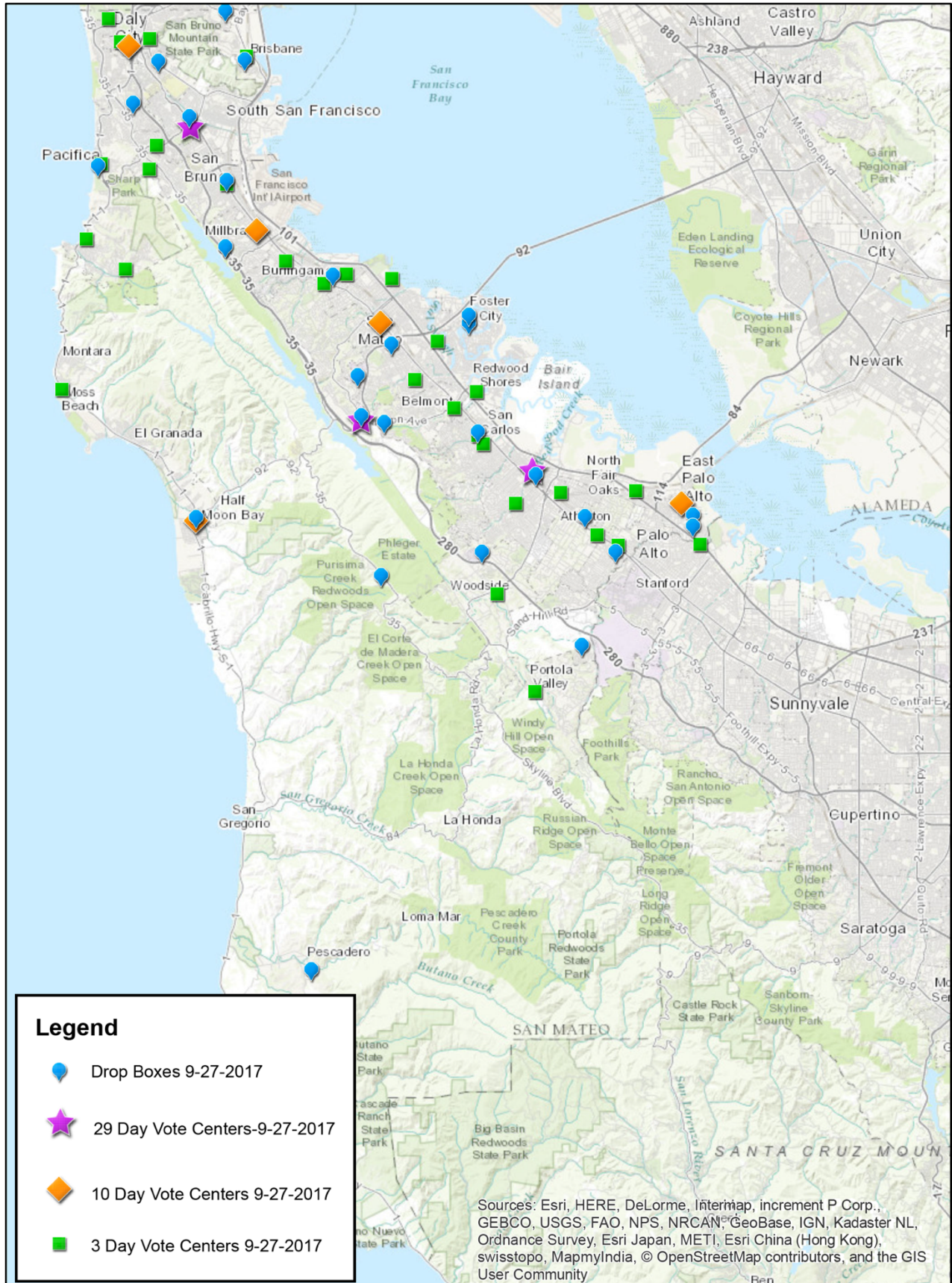
Atherton	Atherton Town Council Chambers
Belmont	Belmont City Hall, Emergency Operations Center
Brisbane	Brisbane City Hall, Community Meeting Room
Burlingame	Burlingame City Hall, Conference Room A
Burlingame	Saint Paul's Episcopal Church
Colma	Emergency Operations Center
Daly City	Hillside Clubhouse
Daly City	Marchbank Park
Daly City	Holy Child and St. Martin Episcopal Church
East Palo Alto	Joan and Lewis Platt EPA Family YMCA
Foster City	Foster City Recreation Center
Hillsborough	Fire Station 32
Menlo Park	Arrillaga Recreation Center, Oak Room
Menlo Park	Onetta Harris Community Center
Millbrae	Modular Community Center
Moss Beach	The Church of Jesus Christ of Latter-day Saints
Pacifica	Pacifica School District - Board Room
Pacifica	St. Peter Catholic Church
Pacifica	TBD
Portola Valley	Historic School
Redwood City	Woodside Fire Training Room
Redwood C./N. Fair Oaks	TBD
Redwood Shores	San Mateo County Office of Education
South San Francisco	Grand Library
South San Francisco	TBD
San Bruno	TBD
San Carlos	San Carlos Library, Conference Room
San Carlos	TBD
San Mateo	Tentatively - King Community Center
San Mateo	San Mateo City Hall - Conference Room C
Woodside	Woodside Village Church

Ballot Drop-off Box Locations Open 28 Days before Election

Atherton	City Hall 91 Ashfield Road Atherton, CA 94027	Millbrae	City Hall 621 Magnolia Avenue Millbrae, CA 94030
Belmont	City Hall One Twin Pines Lane, Suite 375 Belmont, CA 94002	Pacifica	City Hall 170 Santa Maria Avenue Pacifica, CA 94044
Brisbane	City Hall 50 Park Place Brisbane, CA 94005	Portola Valley	Town Hall 765 Portola Road Portola Valley, CA 94028
Burlingame	City Hall 501 Primrose Road Burlingame, CA 94010	Redwood City	City Hall 1017 Middlefield Road Redwood City, CA 94063
Colma	Town Hall 1198 El Camino Real Colma, CA 94014	Redwood City	Assessor-County Clerk-Recorder 555 County Center, 1 st Floor Redwood City, CA 94063
Daly City	City Hall 333 90th Street Daly City, CA 94015	San Bruno	City Hall 567 El Camino Real San Bruno, CA 94066
East Palo Alto	City Hall 2415 University Avenue East Palo Alto, CA 94303	San Carlos	City Hall 600 Elm Street San Carlos, CA 94070
Foster City	City Hall 610 Foster City Boulevard Foster City, CA 94404	San Mateo	City Hall 330 West 20th Avenue San Mateo, CA 94403
Half Moon Bay	City Hall 501 Main Street Half Moon Bay, CA 94019	San Mateo	Registration & Elections Division 40 Tower Road San Mateo, CA 94402
Menlo Park	City Hall 701 Laurel Street Menlo Park, CA 94025	South San Francisco	City Hall 400 Grand Avenue South San Francisco, CA 94080
Hillsborough	Town Hall 1600 Floribunda Avenue Hillsborough, CA 94010	South San Francisco	Main Library 840 West Orange Avenue South San Francisco, CA 94080
Woodside	Town Hall 2955 Woodside Road Woodside, CA 94062		

Three more locations to be determined

Proposed Vote Center & Ballot Drop-off Locations Map



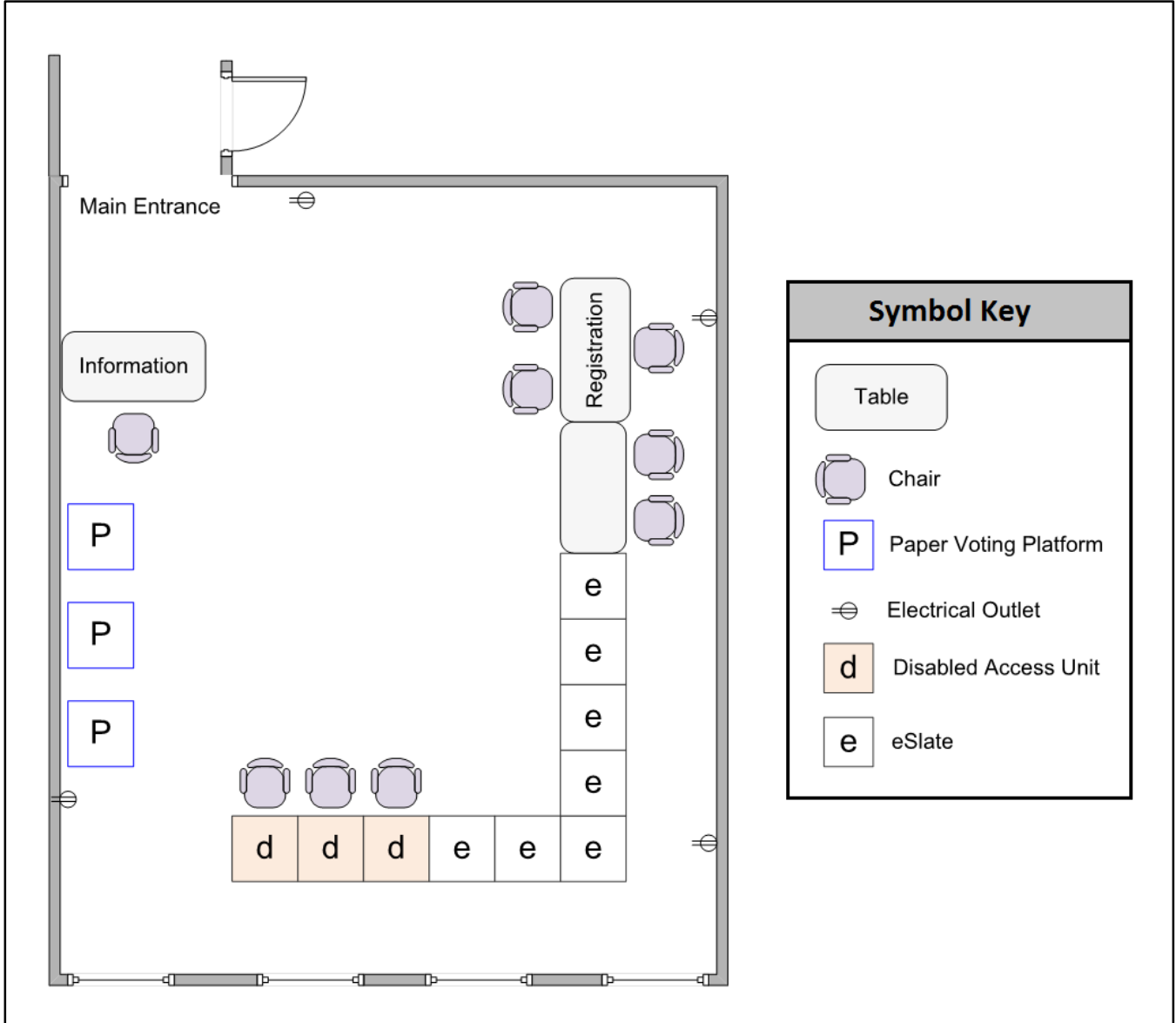
CALIFORNIA VOTER'S CHOICE ACT VOTE CENTER LAYOUT (PROPOSED)



Office of Mark Church
Chief Elections Officer & Assessor-County Clerk-Recorder

Vote Center Layout (Proposed)

San Bruno City Hall – Conference Room 115



CALIFORNIA VOTER'S CHOICE ACT

VOTING ACCESSIBILITY ADVISORY COMMITTEE & LANGUAGE ACCESSIBILITY ADVISORY COMMITTEE



Office of Mark Church
Chief Elections Officer & Assessor-County Clerk-Recorder



OFFICE OF
**ASSESSOR-COUNTY CLERK-
RECORDER & ELECTIONS**
COUNTY OF SAN MATEO

MARK CHURCH
ASSESSOR-COUNTY CLERK-
RECORDER & CHIEF ELECTIONS OFFICER

San Mateo County Voting Accessibility Advisory Committee

San Mateo County Registration & Elections Division established a Voting Accessibility Advisory Committee (VAAC) to advise, assist, and provide recommendations to the Chief Elections Officer regarding the implementation of federal and state laws relating to access to the electoral process by older adults and persons with disabilities. It is the mission of the VAAC to ensure that all persons can vote independently and privately.

Member Roster 2017 - 2018

Craig McCulloh, Chairperson
San Mateo County Health Systems Aging and Adult Services

Bill Hershon
Disability Rights California

Michael Levinson
Paratransit Coordinating Council

Benjamin McMullan
Center for Independence

Fred Nisen
Disability Rights California

Wilhelmina Riley
Paratransit Coordinating Council

40 Tower Road, San Mateo, CA 94402
P 650.312.5222 F 650.312.5348 **email** registrar@smcare.org **web** www.shapethefuture.org



OFFICE OF
**ASSESSOR-COUNTY CLERK-
RECORDER & ELECTIONS**
COUNTY OF SAN MATEO

MARK CHURCH
ASSESSOR-COUNTY CLERK-
RECORDER & CHIEF ELECTIONS OFFICER

San Mateo County Language Accessibility Advisory Committee

The San Mateo County Chief Elections Officer established the Language Accessibility Advisory Committee (LAAC) to advise and assist the Chief Elections Officer on matters relating to language accessibility to the electoral process by voters with limited English proficiency. It is the mission of the LAAC to assist the Chief Elections Officer to enhance language accessibility opportunities and compliance with all federal, state and local laws.

Member Roster 2017 - 2018

Rosa Uriarte, Chairperson
International Institute of the Bay Area

Wesley Taoka, Vice Chairperson
San Mateo Japanese-American Community Center

June Chen
Asian Pacific Islander American Public Affairs Association (APAPA), Peninsula Chapter

Kelly Chew
Self-Help for the Elderly

Julio Garcia
Community Advocate

Mukta Vadera
Community Advocate

40 Tower Road, San Mateo, CA 94402
P 650.312.5222 F 650.312.5348 **email** registrar@smcare.org **web** www.shapethefuture.org

CALIFORNIA VOTER'S CHOICE ACT CITY ELECTION OFFICIALS



**Office of Mark Church
Chief Elections Officer & Assessor-County Clerk-Recorder**

City Election Officials

Atherton

Ms. Theresa DellaSanta
91 Ashfield Road
Atherton, CA 94027
650.752.0529
tdellasanta@ci.atherton.ca.us

Brisbane

Ms. Ingrid Padilla
50 Park Place
Brisbane, CA 94005
415.508.2113
cityclerk@ci.brisbane.ca.us

Colma

Ms. Caitlin Corley
1198 El Camino Real
Colma, CA 94014
650.997.8311
caitlin.corley@colma.ca.gov

East Palo Alto

Ms. Maria Buell, Deputy
2415 University Avenue
East Palo Alto, CA 94303
650.853.3127
mbuell@cityofepa.org

Half Moon Bay

Ms. Jessica Blair
501 Main Street
Half Moon Bay, CA 94019
650.726.8271
jblair@hmbcity.com

Menlo Park

Mr. Clay J. Curtin, Interim
701 Laurel Street
Menlo Park, CA 94025
650.330.6615
cjcurtin@menlopark.org

Belmont

Hon. Terri Cook
One Twin Pines Lane, Suite 375
Belmont, CA 94002
650.595.7413
tcook@belmont.gov

Burlingame

Ms. Meaghan Hassel-Shearer
501 Primrose Road
Burlingame, CA 94010
650.558.7203
mhasselshearer@burlingame.org

Daly City

Hon. Annette Hipona
333 90th Street
Daly City, CA 94015
650.991.8078
ahipona@dalcycity.org

Foster City

Ms. Doris Palmer
610 Foster City Boulevard
Foster City, CA 94404
650.286.3250
dpalmer@fostercity.org

Hillsborough

Ms. Miyuki Yokoyama
1600 Floribunda Avenue
Hillsborough, CA 94010
650.375.7412
myokoyama@hillsborough.net

Millbrae

Ms. Angela Louis
621 Magnolia Avenue
Millbrae, CA 94030
650.259.2333
alouis@ci.millbrae.ca.us

Pacifica

Ms. Kathy O'Connell
170 Santa Maria Avenue
Pacifica, CA 94044
650.738.7307
o'connellk@ci.pacifica.ca.us

Redwood City

Ms. Pam Aguilar
1017 Middlefield Road
Redwood City, CA 94063
650.780.7220
paguilar@redwoodcity.org

San Carlos

Ms. Crystal Mui
600 Elm Street
San Carlos, CA 94070
650.8024219
cmui@cityofsancarlos.org

South San Francisco

Hon. Krista Martinelli
400 Grand Avenue
P.O. Box 711
South San Francisco, CA 94083
650.877.8518
krista.martinelli@ssf.net

Portola Valley

Ms. Sharon Hanlon
765 Portola Road
Portola Valley, CA 94028
650.851.1700
shanlon@portolavalley.net

San Bruno

Hon. Carol Bonner
567 El Camino Real
San Bruno, CA 94066
650.616.7058
cbonner@sanbruno.ca.gov

San Mateo

Ms. Patrice Olds
330 West 20th Avenue
San Mateo, CA 94403
650.522.7042
polds@cityofsanmateo.org

Woodside

Ms. Dora Wong
2955 Woodside Road
P.O. Box 620005
Woodside, CA 94062
650.851.6790
dwong@woodsidetown.org

CALIFORNIA VOTER'S CHOICE ACT COMMUNITY PARTNERS



**Office of Mark Church
Chief Elections Officer & Assessor-County Clerk-Recorder**

Community Partners Supervisory District 1

Agency	Address	City
Boys & Girls Clubs North San Mateo County	201 Park Rd	South San Francisco
Burlingame Long Term Care	1100 Trousdale Drive	Burlingame
CALL Primrose	139 Ford St	Burlingame
Chadbourne Adult Activity Center	450 Chadbourne Avenue	Millbrae
City of San Mateo Senior Center	2645 Alameda de las Pulgas	San Mateo
Community Learning Center	520 Tamarack Lane	South San Francisco
El Concilio of San Mateo County	1419 Burlingame Ave	Burlingame
Friends of the Millbrae Public Library	1 Father Junipero Serra Trl	Millbrae
Global Solutions for Infectious Diseases	830 Bancroft Way, Ste 101	South San Francisco
Hillsborough Beautification Foundation	1600 E Truxtun Ave	Hillsborough
Hillsborough Schools Foundation	300 3Rd St., #919	Hillsborough
Magnolia Senior Center	601 Grand Avenue	South San Francisco
Millbrae Senior Center	477 Lincoln Circle	Millbrae
Millbrae Skilled Care	33 Mateo Avenue	Millbrae
Palcare	945 California Dr	Burlingame
PARCA	800 Airport Blvd, Ste 320	Burlingame
Peninsula Humane Society & SPCA	1450 Rollins Rd	Burlingame
Peninsula Post-Acute	1609 Trousdale Drive	Burlingame
Pied Piper Players	Po Box 1996	Burlingame
San Bruno Community Foundation	901 Sneath Lane, Suite 209	San Bruno
San Bruno Senior Center	1555 Crystal Springs Road	San Bruno
San Bruno Skilled Nursing Hospital	891 El Camino Real	San Bruno
South San Francisco Community Learning Center	520 Tamarack Lane	South San Francisco
Training for Safety, Inc.	801 Magnolia Ave	Burlingame

Community Partners Supervisory District 2

Agency	Address	City
American Association of University Women (AAUW)	P.O. Box 1465	San Mateo
Bay Area Montessori Association	1876 E. Fitzgerald Road	San Mateo
Belmont Vista Convalescent	1041 Hill Street	Belmont
Belmont-Redwood Shores School District	2960 Hallmark Drive	Belmont
Brookside Skilled Nursing Hospital	2620 Flores Street	San Mateo
Carlmont Gardens Nursing Center	2140 Carlmont Drive	Belmont
Center for Independence	2001 Winward Way, Suite 103	San Mateo
College of San Mateo	1700 W Hillsdale Boulevard	San Mateo
College of San Mateo Disability Resource Center (DRC)	1700 W. Hillsdale Boulevard College Center Building 10 Room 110	San Mateo
CORA (Community Overcoming Relationship Abuse)	2211 Palm Avenue	San Mateo
Family Housing and Adult Resources	20 East 20th Ave	San Mateo
Foster City Parks and Recreation Department: Senior Wing	650 Shell Boulevard	Foster City
Friends of the Mandarin Scholars in the SMFCSD	715 Hearst Avenue, Ste 200	San Mateo
Homework Central	Po Box 6687	San Mateo
Human Investment Project, Inc. (HIP)	3639 Midway Dr # 376	San Mateo
Israel Peace Initiative	13505 Union Road	San Mateo
JACL: San Mateo Japanese American Community Center	415 S Claremont Street	San Mateo
LWV North and Central San Mateo County	444 Peninsula Avenue	San Mateo
Mid-Peninsula Boys & Girls Club, Inc.	200 Mcallister Street	San Mateo
Mills-Peninsula Extended Care	100 S San Mateo Drive	San Mateo
NAACP San Mateo Branch #1068	P.O. Box 5280	San Mateo

NAMI San Mateo County	165 Preda St Apt 39	San Mateo
National Association for the Advancement of Colored People	825 Monte Diablo Avenue	San Mateo
Nazareth Vista	900 6th Avenue	Belmont
Newcomers' Club of San Mateo County	167 Flying Mist Isle	Foster City
Orgainzation of Chinese Americans	P.O. Box 218	San Mateo
Peninsula Conflict Resolution Center	1660 South Amphlett Blvd	San Mateo
Peninsula Family Service	24 2nd Ave	San Mateo
Peninsula Jewish Community Center	800 Foster City Boulevard	Foster City
People Power Belmont	michelle@michellemyhre.com	Belmont
Samaritan House	4031 Pacific Blvd	San Mateo
San Francisco Achievers	7471 Monterey Street	San Bruno
San Francisco Bay Area Autism	Po Box 249	San Mateo
San Mateo Adult School	789 East Poplar Avenue	San Mateo
San Mateo Buddhist Temple	2 S Claremont Street	San Mateo
San Mateo County Health Foundation	222 Ridgewood Dr	San Mateo
San Mateo County Health System Aging and Adult Services	225 37th Avenue	San Mateo
San Mateo County Union Community Alliance	1151 Sutter St., #1	Foster City
San Mateo Garden Center	605 15Th St Ste B	San Mateo
San Mateo High School Foundation	2037 W Bullard Ave., Pmb 306	San Mateo
San Mateo Medical Center	222 W 39th Avenue	San Mateo
Self-Help for the Elderly	50 E 5th Avenue	San Mateo
Shopping for a Change	801 K St, Ste 1236	San Mateo
Silicon Valley Community Foundation	1300 South El Camino Real Suite 100	San Mateo
Twin Pines Senior Center	20 Twin Pines Lane	Belmont
Zawaya	3105 Sierra Oaks Dr	San Mateo

Community Partners Supervisory District 3

Agency	Address	City
AbleCloset	100 Ericson Ct, Ste 100A	San Carlos
Cabrillo Education Foundation	Po Box 354	Half Moon Bay
Coastside Adult Day Health Center	6445 Camden Ave.	Half Moon Bay
Coastside Child Development Center*	Po Box 84	Half Moon Bay
Coastside Hope & Moonridge Learning Center	P.O. Box 1089	El Granada
Concentric Media, Inc.	Po Box 1414	Menlo Park
Critical Reach	207 W 74Th St	Half Moon Bay
Djerassi Resident Artists Program	2325 3Rd Street, Ste #323	Woodside
Fair Oaks Beautification Association	Po Box 4001	Menlo Park
Healthy Cities Tutoring	Po Box 653	San Carlos
Holbrook-Palmer Recreation Park Foundation*	150 Spear St, Ste 500	Atherton
Institute for the Advancement of Human Behavior	430 E Tulare Ave.	Portola Valley
La Costa Adult School	498 Kelly Avenue	Half Moon Bay
Land Dancers	2240 S Union Ave	La Honda
League of Women Voters- South SMC	713 Santa Cruz Aveune Suite 9	Menlo Park
Linda Mar Care Center	751 San Pedro Terrace Road	Pacifica
Music for Minors, Inc.	1100 Geneva Avenue	San Carlos
National Center for Equine Facilitated Therapy, Inc.*	880 Elyria Drive	Woodside
Pacifica Library Foundation	1038 Howard St	Pacifica
Pacifica Nursing and Rehab Center	385 Esplanade Street	Pacifica
Pacifica Resource Center	1809 Palmetto Ave	Pacifica
Pacifica School Volunteers	375 Reina Del Mar	Pacifica
Pacifica Senior Services	540 Crespi Drive	Pacifica
Pacificans Care	1141 Catalina Dr., #137	Pacifica

Pacifica's Environmental Family	Po Box 259	Pacifica
Peninsula Outreach Program	299 W Foothill Blvd., #202	Woodside
Peninsula Volunteers, Inc.	800 Middle Avenue	Menlo Park
Pie Ranch	Po Box 363	Pescadero
Puente de la Costa Sur	Po Box 554	Pescadero
Puente/La Honda Office	8865 La Honda Road Suite 4	La Honda
Puente/Pescadero Office	620 North Street	Pescadero
San Carlos Adult Community Center	601 Chestnut Street	San Carlos
San Carlos Educational Foundation	Po Box 1214	San Carlos
San Carlos Together	Po Box 74	San Carlos
Sanchez Art Center	1220-B Linda Mar Blvd	Pacifica
Second Harvest Food Bank	1051 Bing Street	San Carlos
Senior Coastsiders: Senior Center	925 Main Street	Half Moon Bay
Seton Coastside Long Term Care	600 Marine Boulevard	Moss Beach
South Coast Childrens' Services	Po Box 525	Pescadero
StarVista	610 E California Ave.	San Carlos
Terma Foundation	7985 Santa Monica Blvd, # 123	Half Moon Bay
The Sequoias	501 Portola Road	Portola Valley
Vida Verde Nature Education	354 South Harvard Blvd. Taras Hall	San Gregorio
Villages of San Mateo County	P.O. Box 813	San Carlos

Community Partners Supervisory District 4

Agency	Address	City
ABS-CBN Foundation	150 Mcgovern Way	Redwood City
Art in Action	3921 Loch Lomond Dr	Menlo Park
Atherton Regency	1275 Crane Street	Menlo Park
Canada College Disability Resource Center	4200 Farm Hill Blvd Bldg 5 Rm 133	Redwood City
Center for Excellence in Nonprofits	330 Twin Dolphin Dr, Ste 151	Redwood City
Child and Family Institute	330 Ravenswood Ave	Menlo Park
Child Care Coordinating Council	330 Twin Dolphin Drive Suite 119	Redwood City
Commission on the Status Women	455 County Center 5th Floor	Redwood City
Devonshire Oaks Nursing Center	3635 Jefferson Avenue	Redwood City
Diving for a Cause	3034 MCGarvey Ave	Redwood City
East Palo Alto Community Alliance and Neighborhood	2362 Bancroft Way	East Palo Alto
East Palo Alto Senior Center	560 Bell Street	East Palo Alto
Fair Oaks Community Center	2600 Middlefield Road	Redwood City
Geohazards International	687 Bay Rd	Menlo Park
Green Salt	1734 W Shaw Ave	East Palo Alto
Herban Health	1765 E Bayshore Rd Unit 205	East Palo Alto
International Institute of the Bay	2600 Middlefield Road	Redwood City
JobTrain	1200 Obrien Dr	Menlo Park
Kainos Home and Training Center	363 Indianola Rd	Redwood City
Latino Leadership Council	2919 Menalto Avenue	Menlo Park
Legal Aid Society of San Mateo County	330 Twin Dolphin Dr Ste 123	Redwood City
LWV South San Mateo County	PO Box 2244	Menlo Park
Menlo Park Library Foundation	800 Airport Blvd, Ste 320	Menlo Park
Menlo Park Senior Center	100 Terminal Avenue	Menlo Park
Mental Health Association of San Mateo County	2686 Spring St	Redwood City

My New Red Shoes	330 A St, #51	Redwood City
Nuestra Casa	1798 Bay Road	East Palo Alto
One East Palo Alto Neighborhood Improvement Initiative	17937 Valladares Dr	East Palo Alto
One New Heartbeat	10100 Trinity Pkwy, Ste 310	Redwood City
Peninsula Family Service	2600 Middlefield Road	Redwood City
Redwood City Veterens Memorial Senior Center	1455 Madison Avenue	Redwood City
San Mateo County Service League	725 Cedar Street, #11	Redwood City
Sequoia Adult School	3247 Middlefield Road	Menlo Park
Sequoia High School Alumni Association	Po Box 2534	Redwood City
Service League of San Mateo County	727 Middlefield Rd	Redwood City
SparkPoint at Canada College	4200 Farm Hill Blvd Bldg 9 Rm 132	Redwood City
SV Links	116 No. I Street	Menlo Park
The Golden Gate Blues Society	Po Box 2591	Redwood City
Volunteers for Outdoor California	2744 Sand Hill Rd	Redwood City
Wings Learning Center	1201 Civic Center Blvd	Redwood City
Worldwide AIDS Coalition	8566 Fallbrook Circle Unit 704B	Redwood City

Community Partners Supervisory District 5

Agency	Address	City
Jefferson Adult Division	699 Serramonte Boulevard	Daly City
South San Francisco Adult School	825 Southwood Drive	South San Francisco
Kindred at Home	355 Gellert Boulevard Suite 110	Daly City
Seton Medical Center: Skilled Nursing Facility	1900 Sullivan Avenue	Daly City
St. Francis Convalescent Pavilion	99 Escuela Drive	Daly City
St. Francis Heights Convalescent Hospital	35 Escuela Road	Daly City
Daly City Youth Health Center	2780 Junipero Serra Boulevard	Daly City
Daly City Partnership	725 Price Street	Daly City
Lincoln Park Community Center	901 Brunswick Street	Daly City
Skyline College EOPS & CARE	3300 College Drive Building 2 Second Floor	San Bruno
SparkPoint at Skyline College	3300 College Drive Building 1 Floor 2	San Bruno
Doelger Senior Center	101 Lake Merced Boulevard	Daly City
Brisbane Village Helping Hands	Po Box 734	Brisbane
Daly City Community Service Center	350 - 90th St	Daly City
Daly City Peninsula Partnership Collaborative	111 Errett Circle	Daly City
Daly City Public Library Associates	Po Box 3283	Daly City
Jericho Project	51 Daniels Ave	Brisbane
MAC's Children and Family Services	Po Box 297	Daly City
Migrante - San Mateo	No physical address	Daly City
North Peninsula Food Pantry & Dining Center	Po Box 280	Daly City
The Arc of San Francisco	6644 Mission Street Ste A	Daly City

Community Partners Out of County

Agency	Address	City
APAPA Peninsula Chapter	4000 Truxel Road Suite 3	Sacramento
Asian Law Caucus	55 Columbus Avenue	San Francisco
Filipino American Democratic Caucus	1557 Larkwood Court	Milpitas
The Lighthouse for the Blind and Visually Impaired	1155 Market Street	San Francisco
The San Francisco Independent Living Resource Center	825 Howard Street	San Francisco
The Santa Clara Valley Blind Center	101 North Bascom Avenue	San Jose
The Vista Center for the Blind	3200 Hillview Avenue Suite 120	Palo Alto
Goodwill SF/SMC/Marin Corporate Offices	1500 Mission Street	San Francisco
Senior Center Without Walls	881 Turk Street	San Francisco
Midpeninsula Regional Open Space District	330 Distel Circle	Los Altos
Filipino Community Center	4681 Mission Street	San Francisco
ACLU Mid-Peninsula Chapter	39 Drumm Street	San Francisco
ACLU North Peninsula Chapter	39 Drumm Street	San Francisco
Recovery Survival Network	Po Box 281344	San Francisco
State Council on Developmental Disabilities	1515 Clay St., Suite 300	Oakland
Working Partnerships USA	2102 Almaden Rd Suite 112	San Jose
4 Elements Earth Education, Inc.	PO Box 459	Grass Valley
4Paws	555 Canon Park Dr	St. Helena
Disability Services and Legal Center	521 Mendocino Avenue	Santa Rosa
In-Home Supportive Services	1888 Senter Road	San Jose
California Council for the Blind	2143 Hurley Way Suite 250	Sacramento
California Council for the Blind	1550 Bancroft Avenue #113	San Leandro

CALIFORNIA VOTER'S CHOICE ACT COMMUNITY EVENTS



**Office of Mark Church
Chief Elections Officer & Assessor-County Clerk-Recorder**

Upcoming Community Events Winter/Spring 2018 Event Calendar

Ongoing	U.S. Naturalization Ceremony
January 15, 2018	Martin Luther K Celebration, East Palo Alto
January 15, 2018	San Mateo County Martin Luther King, Jr. Day
January 29, 2018	Chinese New Year Celebration, Foster City
January 2018	Mayor's State of the City Address, Various Cities
February 2018	Comic Arts Fest, County Libraries
February 10, 2018	Millbrae Lunar New Year Festival
April 2 - 4, 2018	50th Anniversary Commemoration of King's Assassination, East Palo Alto
April 2018	High School Voter Education Weeks
April 2018	Earth Day events
April 30, 2018	Fair Oaks Library: Kermes Festival
April 2018	HSA Belmont Veterans Outreach
May 06, 2018	Foster City Polynesian Festival
May 2018	Streets Alive! Parks Alive! Various Cities
May 13, 2018	6th Annual Reading Bonanza, East Palo Alto
May 2018	May Mental Health Awareness Month events
May 2018	San Carlos Airport Day

2015 – 2016 Winter/Spring Event Calendar Sample

Monday, January 19, 2015	MLK Celebration in East Palo Alto
Sunday, January 25, 2015	AACI Walk Together in East Palo Alto
Saturday, February 06, 2016	Humana & Military Football Event in CSM
Saturday, February 13, 2016	Black History Month Celebration in Daly City
Sunday, February 14, 2016	Chinese New Year Celebration in Foster City
Saturday, February 21, 2015	Midpeninsula African American History Month Celebration in East Palo Alto
Wednesday, February 24, 2016	Sunrise Senior Living Center in Burlingame
Saturday, February 28, 2015	Millbrae Lunar New Year Festival
Saturday, March 19, 2016	Youth Conference at CSM
Tuesday, March 29, 2016	Burlingame Long Term Care
Wednesday, March 30, 2016	USCIS Naturalization Ceremony
Saturday, April 23, 2016	Sand Piper Community Center F.C.
Sunday, April 24, 2016	Fair Oaks Library: Kermes Festival
Friday, April 29, 2016	HSA Belmont Veterans Outreach
Sunday, May 01, 2016	East Palo Alto Apostolic Church
Saturday, May 02, 2015	Foster City Polynesian Festival
Saturday, May 02, 2015	Streets Alive! Parks Alive! in South City
Tuesday, May 03, 2016	Sequoia High School
Thursday, May 05, 2016	Oceania High School
Friday, May 06, 2016	Terra Nova High School
Friday, May 06, 2016	El Camino High School
Thursday, May 12, 2016	Canada College
Saturday, May 14, 2016	6th Annual Reading Bonanza
Sunday, May 15, 2016	St. Francis of Assisi Church
Tuesday, May 17, 2016	Skyline College
Thursday, May 19, 2016	East Palo Alto Academy
Saturday, May 21, 2016	OYE 2016 Latino Youth Conference
Thursday, May 26, 2016	San Mateo County Hospital

CALIFORNIA VOTER'S CHOICE ACT MEDIA PARTNERS



**Office of Mark Church
Chief Elections Officer & Assessor-County Clerk-Recorder**

Media Partners

Television

Univision
NBC Owned Television Stations
KTVU
Telemundo
CBS
ABC
KQED

Radio

Univision (KBRG & KSOL)
Telemundo
KCBS-AM
KQED-FM
KGO-AM
Cumulus Media (KNBR, KGO, KFOG, KSAN & KSJO)
Chinese Radio Sound of Hope
KHMB Coastside Radio 1710 AM
Sing Tao Radio

Newspapers/Magazines

San Mateo Daily Journal
Daily Post
East Palo Alto Today
Embarcadero Publishing (The Almanac)
Daily News Group newspapers
SF Media Group (Examiner newspaper)
Fox Venues (Climate magazine)
Half Moon Bay Review
Spectrum magazine
Philippines Today
News for Chinese
El Reportero
World News
San Francisco Chronicle

Movie Theaters

NCM (Century Theatres)

Posters

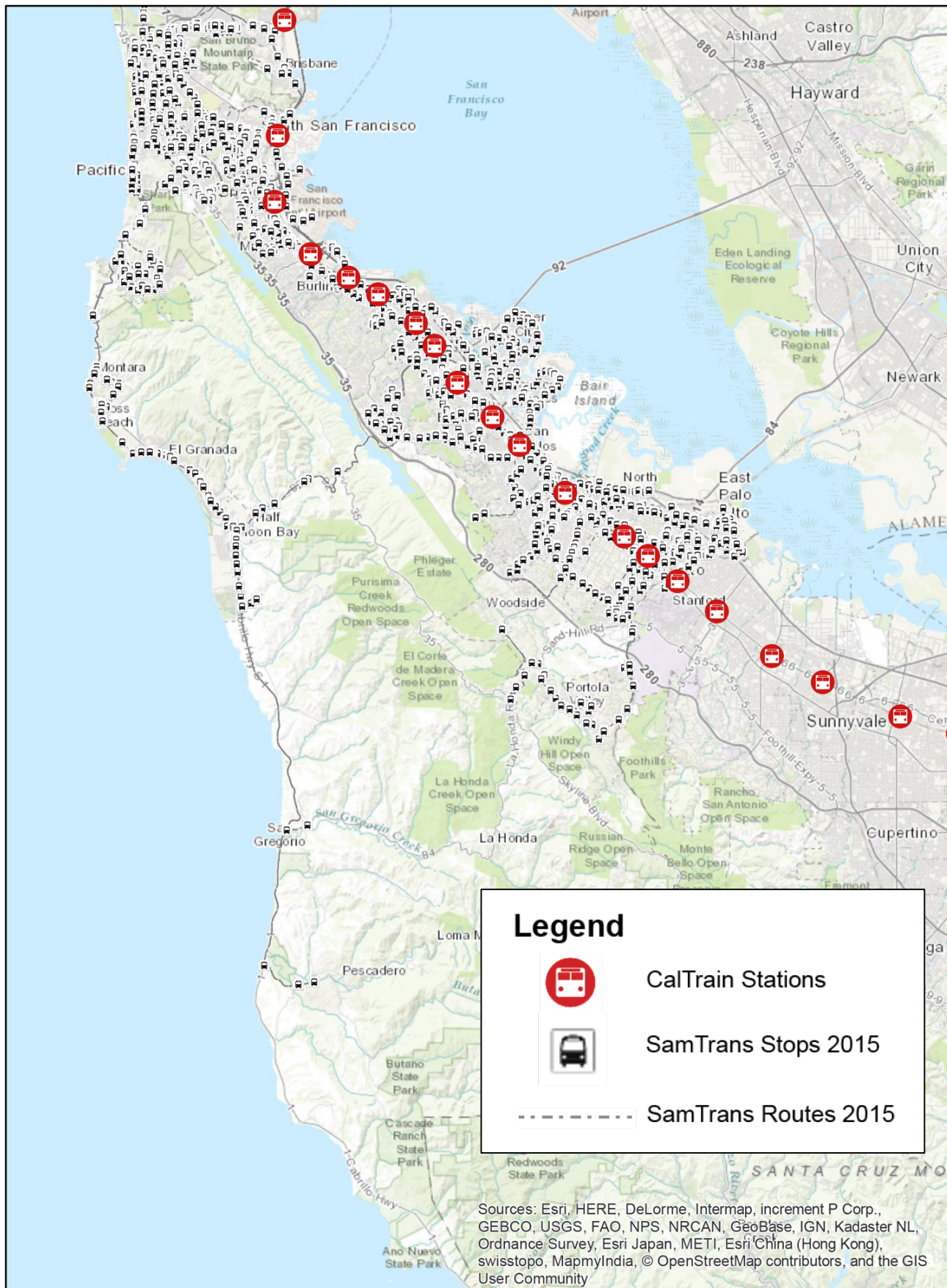
Titan Outdoor - BART Stations

CALIFORNIA VOTER'S CHOICE ACT MAPS



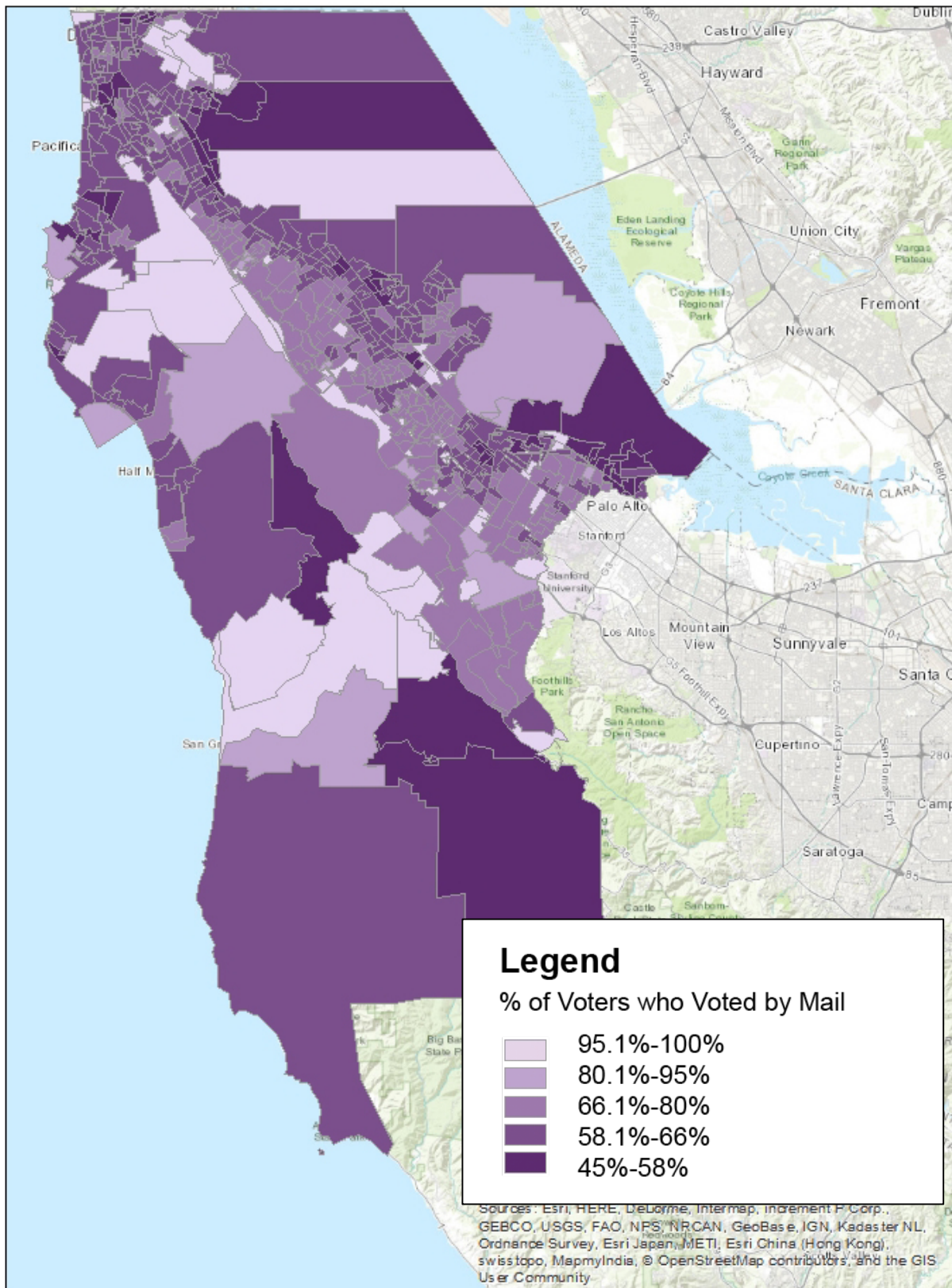
**Office of Mark Church
Chief Elections Officer & Assessor-County Clerk-Recorder**

Public Transit Routes in San Mateo County



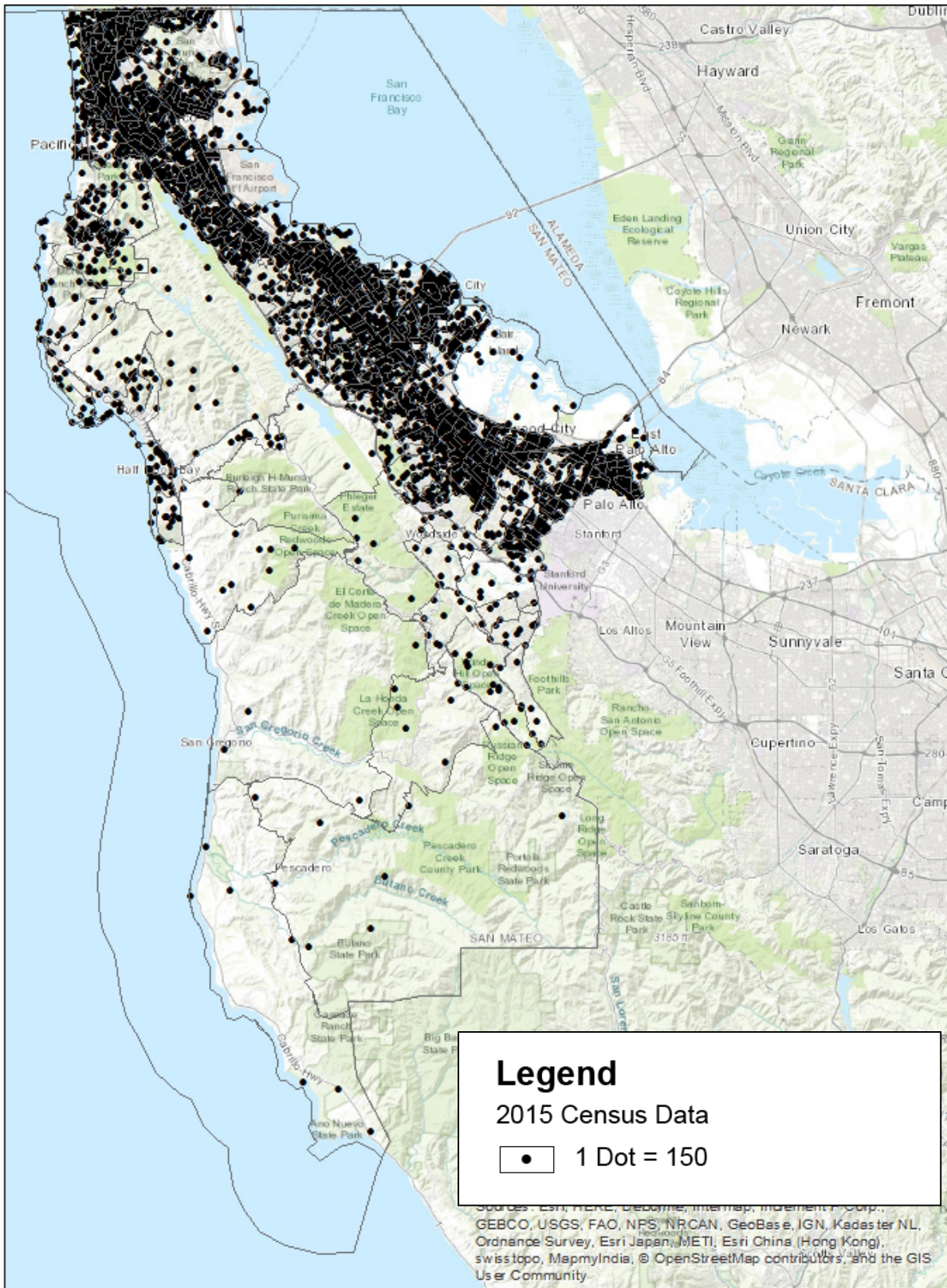
Areas with Low Vote by Mail Usage

This map shows the percent of ballots cast by mail. The darker color indicates relatively lower vote by mail usage.



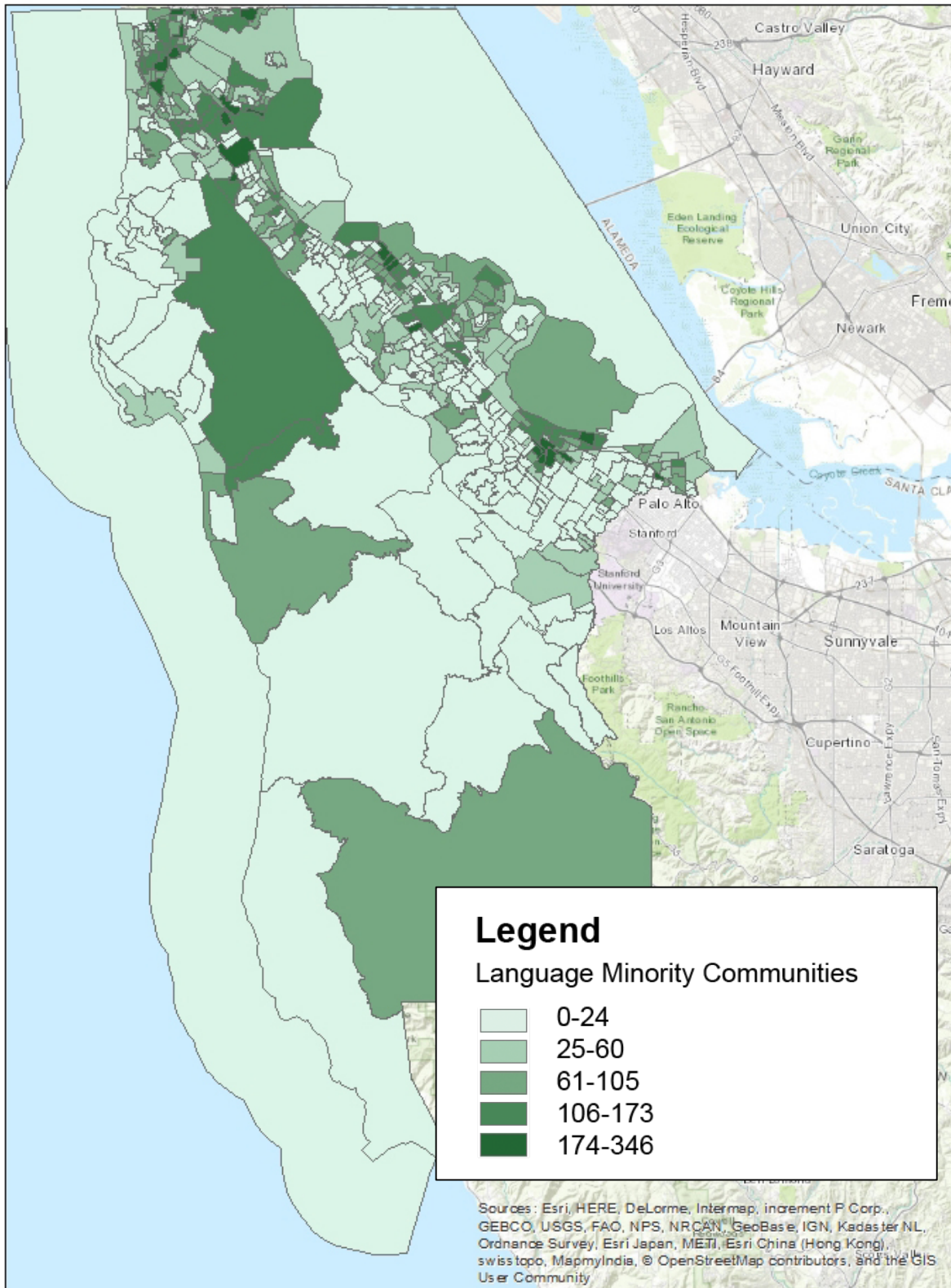
San Mateo County Population

This map shows the population clusters around San Mateo County. The areas with the most black dots have the highest population density.



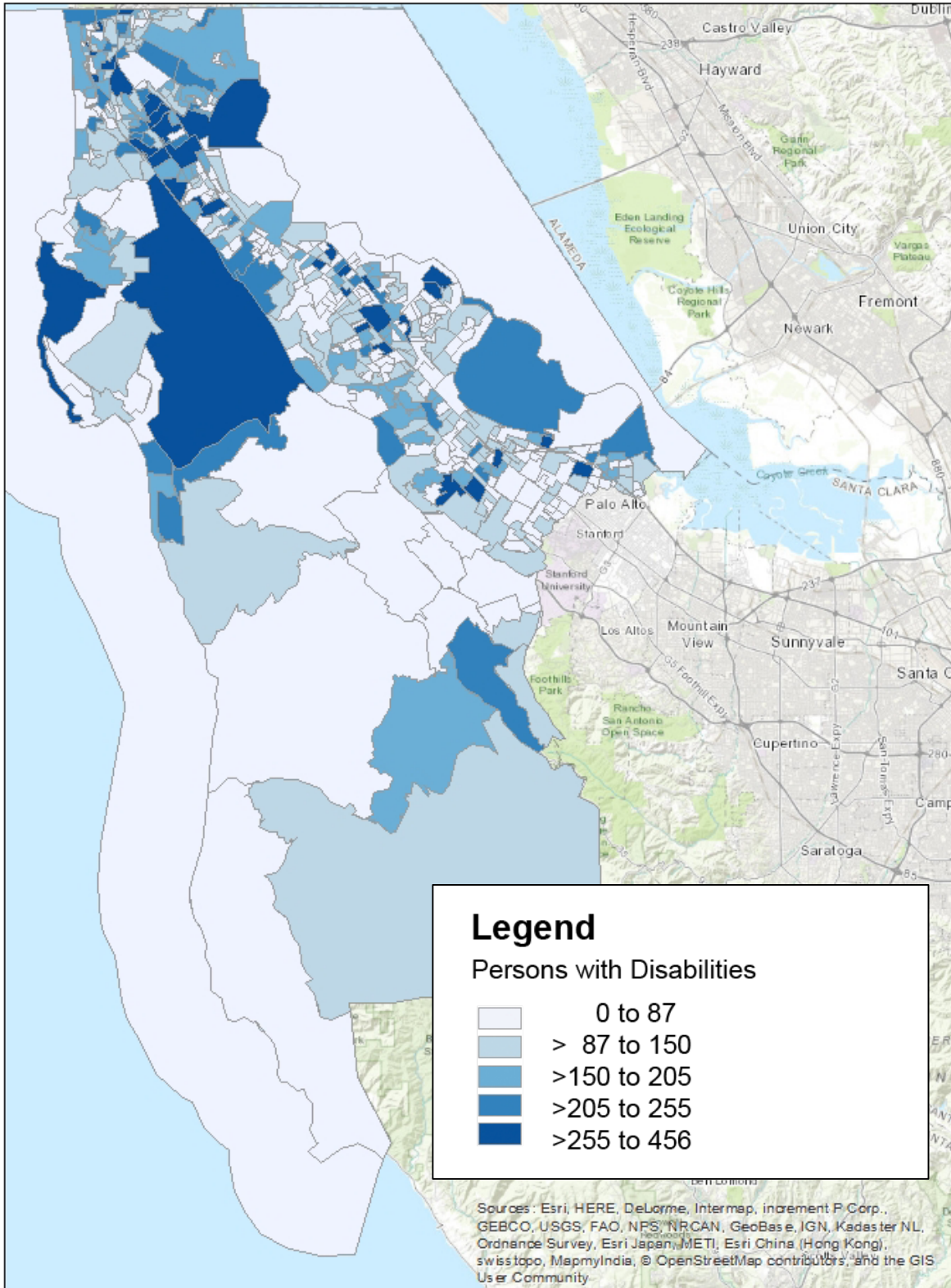
Language Minority Communities

This map shows the population that speaks a language other than English who are not proficient in English. The darker the color, the higher the population.



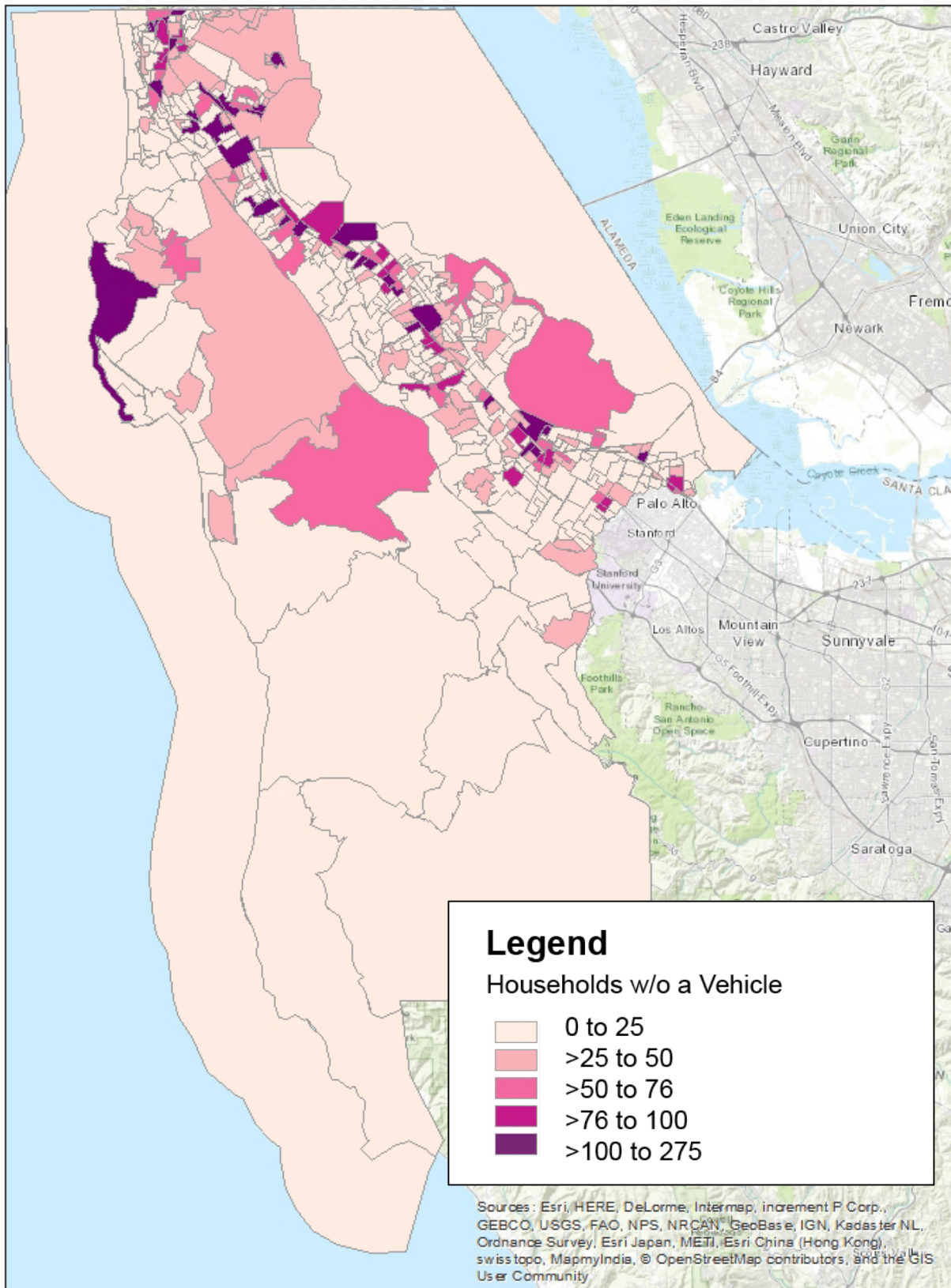
Voters with Disabilities

This map shows the population estimates for voting age residents who have a disability. The darker the color, the more individuals in the area that have a disability.



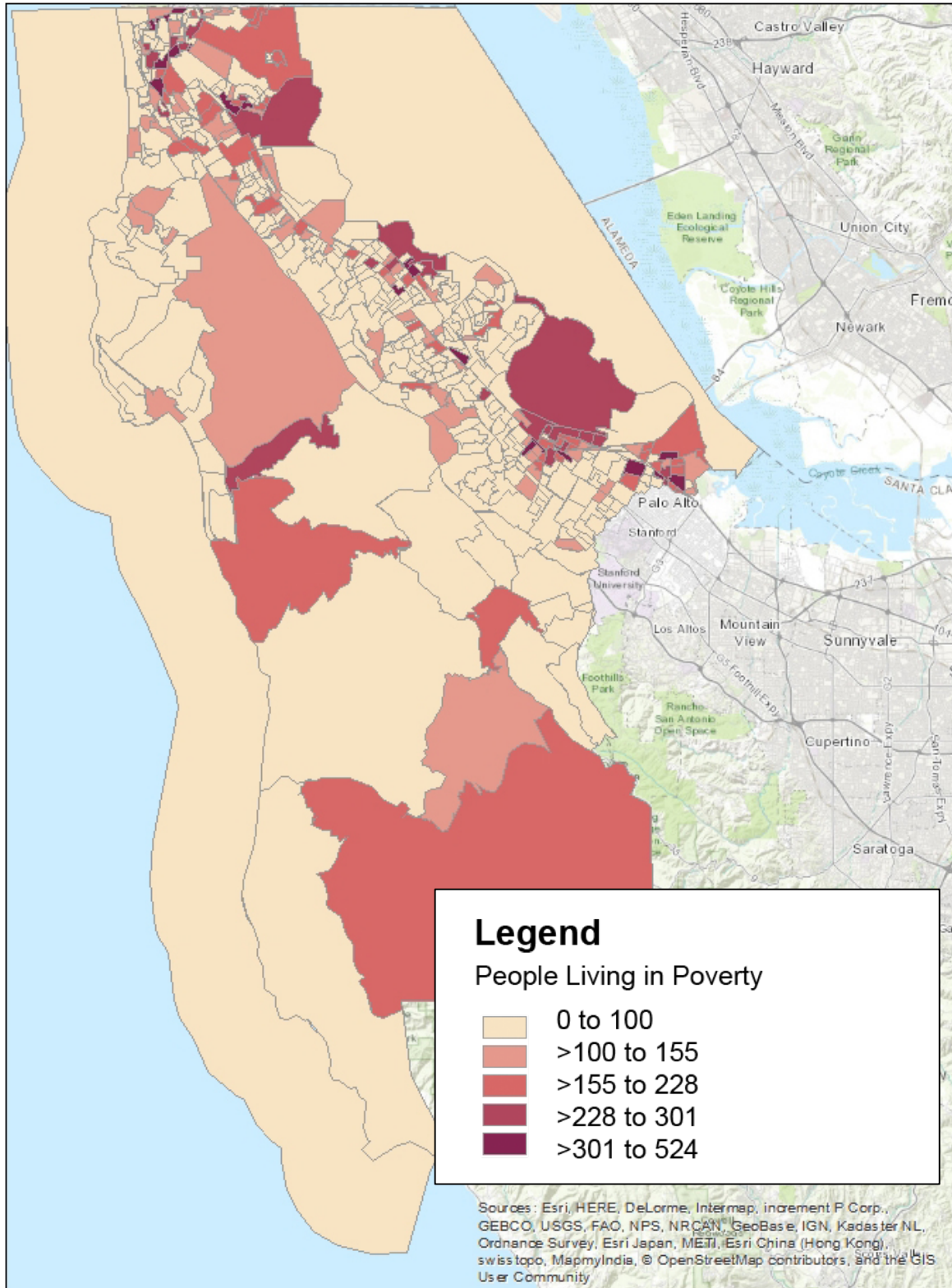
Household Vehicle Ownership

This map shows households that do not own a vehicle. The darker the color, the more households in the area that do not own a vehicle.



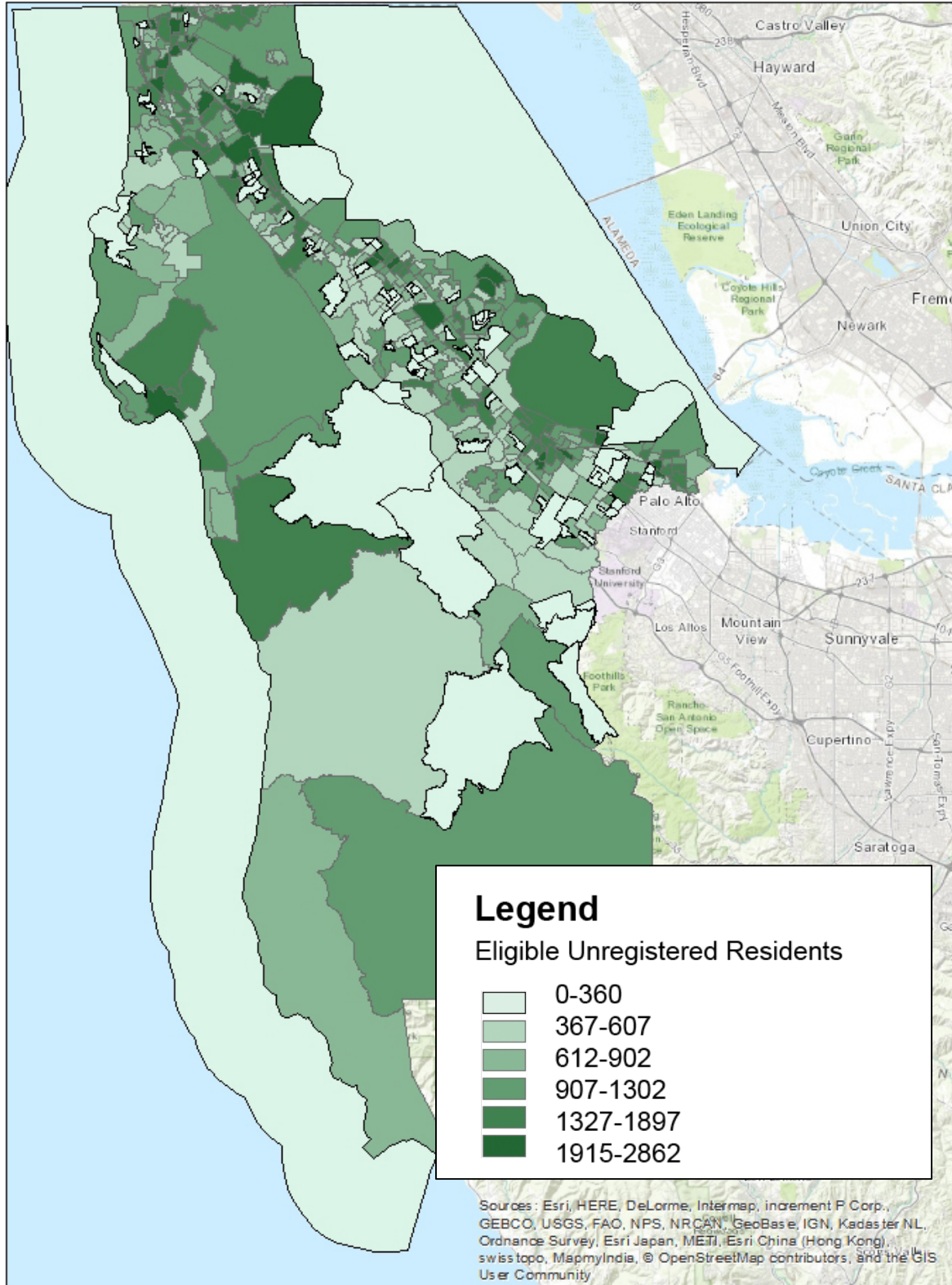
Areas with Individuals Living in Poverty

This map shows the estimated number of people living in poverty in each area of San Mateo County. The darker color indicates a higher number of people living in poverty.



Areas with Eligible Residents Who Are Not Yet Registered to Vote

This map shows the number of eligible residents who are not yet registered. The darker color indicates a high number of eligible but unregistered residents.



CALIFORNIA VOTER'S CHOICE ACT LEGISLATION



**Office of Mark Church
Chief Elections Officer & Assessor-County Clerk-Recorder**

Legislation
Senate Bill No. 450
CHAPTER 832

An act to amend Sections 3017 and 15320 of, to add Sections 4005, 4006, and 4007 to, and to add and repeal Section 4008 of, the Elections Code, relating to elections.

[Approved by Governor September 29, 2016. Filed with
Secretary of State September 29, 2016.]

LEGISLATIVE COUNSEL'S DIGEST

SB 450, Allen. Elections: vote by mail voting and mail ballot elections.

Existing law requires all vote by mail ballots to be voted on or before the day of the election and requires the vote by mail voter to return the ballot by mail or in person, as specified, to the elections official who issued the ballot.

This bill would require an elections official who receives a vote by mail ballot that he or she did not issue to forward that ballot to the elections official who issued the ballot no later than 8 days after receipt. By requiring an elections official to forward a ballot to the elections official who issued the ballot, the bill would impose a state-mandated local program.

Existing law authorizes cities with a population of fewer than 100,000 persons, school districts, and special districts to conduct an all-mailed ballot special election to fill a vacancy on the legislative or governing body of those entities under specified conditions.

This bill, the California Voter's Choice Act, would, on or after January 1, 2018, authorize specified counties, and on or after January 1, 2020, authorize any county except the County of Los Angeles, to conduct any election as an all-mailed ballot election if certain conditions are satisfied, including conditions related to ballot dropoff locations, vote centers, and plans for the administration of all-mailed ballot elections. The bill would require the Secretary of State, within 6 months of each all-mailed ballot election conducted by a county pursuant to these provisions, to report certain information to the Legislature regarding that election. The bill would require the county that conducted the all-mailed ballot election to submit to the Secretary of State the information needed for the Secretary of State to prepare the report.

This bill would, on or after January 1, 2020, authorize the County of Los Angeles to conduct any election as a vote center election if certain conditions are satisfied, including conditions related to ballot dropoff locations and vote centers. The bill would, on or after January 1, 2020, authorize the County of Los Angeles to conduct a special election as an all-mailed ballot election pursuant to specified provisions that apply to every county that chooses to conduct a special election as an all-mailed ballot election.

This bill would also require the Secretary of State to establish a taskforce that includes certain individuals to review all-mailed ballot elections conducted pursuant to these provisions and to provide comments and recommendations to the Legislature within 6 months of each all-mailed ballot election or vote center election.

This bill would incorporate additional changes to Section 3017 of the Elections Code proposed by AB 1921 that would become operative only if AB 1921 and this bill are both chaptered and this bill is chaptered last.

The California Constitution requires the state to reimburse local agencies and school districts for certain costs mandated by the state. Statutory provisions establish procedures for making that reimbursement.

This bill would provide that, if the Commission on State Mandates determines that the bill contains costs mandated by the state, reimbursement for those costs shall be made pursuant to these statutory provisions.

The people of the State of California do enact as follows:

SECTION 1. This act shall be known, and may be cited, as the California Voter's Choice Act.

SEC. 2. Section 3017 of the Elections Code is amended to read:

3017. (a) All vote by mail ballots cast under this division shall be voted on or before the day of the election. After marking the ballot, the vote by mail voter shall do any of the following: (1) return the ballot by mail or in person to the elections official who issued the ballot, (2) return the ballot in person to a member of a precinct board at a polling place or vote center within the state, or (3) return the ballot to a vote by mail ballot dropoff location within the state that is provided pursuant to Section 3025 or 4005. However, a vote by mail voter who is unable to return the ballot may designate his or her spouse, child, parent, grandparent, grandchild, brother, sister, or a person residing in the same household as the vote by mail voter to return the ballot to the elections official who issued the ballot, to the precinct board at a polling place or vote center within the state, or to a vote by mail ballot dropoff location within the state that is provided pursuant to Section 3025 or 4005. The ballot must, however, be received by the elections official who issued the ballot, the precinct board, or the vote by mail ballot dropoff location before the close of the polls on election day. If a vote by mail ballot is returned to a precinct board at a polling place or vote center, or to a vote by mail ballot dropoff location, that is located in a county that is not the county of the elections official who issued the ballot, the elections official for the county in which the vote by mail ballot is returned shall forward the ballot to the elections official who issued the ballot no later than eight days after receipt.

(b) The elections official shall establish procedures to ensure the secrecy of a ballot returned to a precinct polling place and the security, confidentiality, and integrity of any personal information collected, stored, or otherwise used pursuant to this section.

(c) On or before March 1, 2008, the elections official shall establish procedures to track and confirm the receipt of voted vote by mail ballots and to make this information available by means of online access using the county's elections division Internet Web site. If the county does not have an elections division Internet Web site, the elections official shall establish a toll-free telephone number that may be used to confirm the date a voted vote by mail ballot was received.

(d) The provisions of this section are mandatory, not directory, and a ballot shall not be counted if it is not delivered in compliance with this section.

(e) Notwithstanding subdivision (a), a vote by mail voter's ballot shall not be returned by a paid or volunteer worker of a general purpose committee, controlled committee, independent expenditure committee, political party, candidate's campaign committee, or any other group or organization at whose behest the individual designated to return the ballot is performing a service. However, this subdivision does not apply to a candidate or a candidate's spouse.

SEC. 2.5. Section 3017 of the Elections Code is amended to read:

3017. (a) All vote by mail ballots cast under this division shall be voted on or before the day of the election. After marking the ballot, the vote by mail voter shall do any of the following: (1) return the ballot by mail or in person to the elections official who issued the ballot, (2) return the ballot in person to a member of a precinct board at a polling place or vote center within the state, or (3) return the ballot to a vote by mail ballot dropoff location within the state that is provided pursuant to Section 3025 or 4005. However, a vote by mail voter who is unable to return the ballot may designate any person to return the ballot to the elections official who issued the ballot, to the precinct board at a polling place or vote center within the state, or to a vote by mail ballot dropoff location within the state that is provided pursuant to Section 3025 or 4005. The ballot must, however, be received by the elections official who issued the ballot, the precinct board, or the vote by mail ballot dropoff location before the close of the polls on election day. If a vote by mail ballot is returned to a precinct board at a polling place or vote center, or to a vote by mail ballot dropoff location, that is located in a county that is not the county of the elections official who issued the ballot, the elections official for the county in which the vote by mail ballot is returned shall forward the ballot to the elections official who issued the ballot no later than eight days after receipt.

(b) The elections official shall establish procedures to ensure the secrecy of a ballot returned to a precinct polling place and the security, confidentiality, and integrity of any personal information collected, stored, or otherwise used pursuant to this section.

(c) On or before March 1, 2008, the elections official shall establish procedures to track and confirm the receipt of voted vote by mail ballots and to make this information available by means of online access using the county's elections division Internet Web site. If the county does not have an elections division Internet Web site, the elections official shall establish a toll-free telephone number that may be used to confirm the date a voted vote by mail ballot was received.

(d) The provisions of this section are mandatory, not directory, and a ballot shall not be counted if it is not delivered in compliance with this section.

(e) (1) A person designated to return a vote by mail ballot shall not receive any form of compensation based on the number of ballots that the person has returned and no individual, group, or organization shall provide compensation on this basis.

(2) For purposes of this paragraph, "compensation" means any form of monetary payment, goods, services, benefits, promises or offers of employment, or any other form of consideration offered to another person in exchange for returning another voter's vote by mail ballot.

(3) Any person in charge of a vote by mail ballot and who knowingly and willingly engages in criminal acts related to that ballot as described in Division 18 (commencing with Section 18000), including, but not limited to, fraud, bribery, intimidation, and tampering with or failing to

deliver the ballot in a timely fashion, is subject to the appropriate punishment specified in that division.

SEC. 3. Section 4005 is added to the Elections Code, to read:

4005. (a) Notwithstanding Section 4000 or any other law, on or after January 1, 2018, the Counties of Calaveras, Inyo, Madera, Napa, Nevada, Orange, Sacramento, San Luis Obispo, San Mateo, Santa Clara, Shasta, Sierra, Sutter, and Tuolumne, and, except as provided in Section 4007, on or after January 1, 2020, any county may conduct any election as an all-mailed ballot election if all of the following apply:

(1) (A) At least two ballot dropoff locations are provided within the jurisdiction where the election is held or the number of ballot dropoff locations are fixed in a manner so that there is at least one ballot dropoff location provided for every 15,000 registered voters within the jurisdiction where the election is held, as determined on the 88th day before the day of the election, whichever results in more ballot dropoff locations. For purposes of this subparagraph, a vote center that includes an exterior ballot drop box counts only as a single ballot dropoff location. Ballot dropoff locations shall comply with the regulations adopted pursuant to subdivision (b) of Section 3025.

(B) A ballot dropoff location provided for under this section consists of a secure, accessible, and locked ballot box located as near as possible to established public transportation routes and that is able to receive voted ballots. All ballot dropoff locations shall be open at least during regular business hours beginning not less than 28 days before the day of the election, and on the day of the election. At least one ballot dropoff location shall be an accessible, secured, exterior drop box that is available for a minimum of 12 hours per day including regular business hours.

(2) (A) The county elections official permits a voter residing in the county to do any of the following at a vote center:

(i) Return, or vote and return, his or her vote by mail ballot.

(ii) Register to vote, update his or her voter registration, and vote pursuant to Section 2170.

(iii) Receive and vote a provisional ballot pursuant to Section 3016 or Article 5 (commencing with Section 14310) of Chapter 3 of Division 14.

(iv) Receive a replacement ballot upon verification that a ballot for the same election has not been received from the voter by the county elections official. If the county elections official is unable to determine if a ballot for the same election has been received from the voter, the county elections official may issue a provisional ballot.

(v) Vote a regular, provisional, or replacement ballot using accessible voting equipment that provides for a private and independent voting experience.

(B) Each vote center shall have at least three voting machines that are accessible to voters with disabilities.

(3) (A) On the day of the election, from 7 a.m. to 8 p.m., inclusive, and on each of the three days before the election, for a minimum of eight hours per day, at least one vote center is provided for every 10,000 registered voters within the jurisdiction where the election is held, as determined on the 88th day before the day of the election. At least 90 percent of the number of vote centers required by this subparagraph shall be open for all four days during the required

times. Up to 10 percent of the number of vote centers required by this subparagraph may be open for less than four days if at least one vote center is provided for every 10,000 registered voters on each day.

(B) Notwithstanding subparagraph (A), for a jurisdiction with fewer than 20,000 registered voters, a minimum of two voter centers are provided on the day of the election and on each of the three days before the election within the jurisdiction where the election is held.

(4) (A) Beginning 10 days before the day of the election and continuing daily up to and including the fourth day before the election, for a minimum of eight hours per day, at least one vote center is provided for every 50,000 registered voters within the jurisdiction where the election is held, as determined on the 88th day before the day of the election.

(B) Notwithstanding subparagraph (A), for a jurisdiction with fewer than 50,000 registered voters, a minimum of two vote centers are provided within the jurisdiction where the election is held.

(C) The vote centers provided under this section are established in accordance with the accessibility requirements described in Article 5 (commencing with Section 12280) of Chapter 3 of Division 12, the federal Americans with Disabilities Act of 1990 (42 U.S.C. Sec. 12101 et seq.), the federal Help America Vote Act of 2002 (52 U.S.C. Sec. 20901 et seq.), and the federal Voting Rights Act of 1965 (52 U.S.C. Sec. 10101 et seq.).

(D) The vote centers provided under this section are equitably distributed across the county so as to afford maximally convenient options for voters and are established at accessible locations as near as possible to established public transportation routes. The vote centers shall be equipped with voting units or systems that are accessible to individuals with disabilities and that provide the same opportunity for access and participation as is provided to voters who are not disabled, including the ability to vote privately and independently in accordance with Sections 12280 and 19240.

(E) (i) The vote centers provided under this section have an electronic mechanism for the county elections official to immediately access, at a minimum, all of the following voter registration data:

(I) Name.

(II) Address.

(III) Date of birth.

(IV) Language preference.

(V) Party preference.

(VI) Precinct.

(VII) Whether or not the voter has been issued a vote by mail ballot and whether or not a ballot has been received by the county elections official.

(ii) The electronic mechanism used to access voter registration data shall not be connected in any way to a voting system.

(5) A method is available for voters with disabilities to request and receive a blank vote by mail ballot and, if a replacement ballot is necessary, a blank replacement ballot that voters with

disabilities can read and mark privately and independently pursuant to the federal Help America Vote Act of 2002 (52 U.S.C. Sec. 20901 et seq.).

(6) (A) Except as otherwise provided for in this section, election boards for the vote centers established under this section meet the requirements for eligibility and composition pursuant to Article 1 (commencing with Section 12300) of Chapter 4 of Division 12.

(B) Each vote center provides language assistance in all languages required in the jurisdiction under subdivision (c) of Section 12303 or Section 203 of the federal Voting Rights Act of 1965 (52 U.S.C. Sec. 10101 et seq.) in a manner that enables voters of the applicable language minority groups to participate effectively in the electoral process. Each vote center shall post information regarding the availability of language assistance in English and all other languages for which language assistance is required to be provided in the jurisdiction under subdivision (c) of Section 12303 or Section 203 of the federal Voting Rights Act of 1965 (52 U.S.C. Sec. 10101 et seq.).

(i) If a vote center is located in, or adjacent to, a precinct, census tract, or other defined geographical subsection required to establish language requirements under subdivision (c) of Section 12303 or Section 203 of the federal Voting Rights Act of 1965 (52 U.S.C. Sec. 10101 et seq.), or if it is identified as needing language assistance through the public input process described in clause (ii), the county elections official shall ensure that the vote center is staffed by election board members who speak the required language. If the county elections official is unable to recruit election board members who speak the required language, alternative methods of effective language assistance shall be provided by the county elections official.

(ii) The county elections official shall solicit public input regarding which vote centers should be staffed by election board members who are fluent in a language in addition to English pursuant to subdivision (c) of Section 12303 and Section 203 of the federal Voting Rights Act of 1965 (52 U.S.C. Sec. 10101 et seq.).

(iii) The county elections official shall provide notice in the sample ballot, in vote by mail materials, and on his or her Internet Web site of the specific language services available at each vote center.

(C) Each vote center provides election materials translated in all languages required in the jurisdiction under subdivision (c) of Section 14201 and Section 203 of the federal Voting Rights Act of 1965 (52 U.S.C. Sec. 10101 et seq.).

(D) Each vote center provides reasonable modifications and auxiliary aids and services as required by the federal Americans with Disabilities Act of 1990 (42 U.S.C. Sec. 12101 et seq.) and the federal Rehabilitation Act of 1973 (29 U.S.C. Sec. 701 et seq.).

(7) (A) Beginning 10 days before the election, the county elections official maintains, in an electronic format, an index of voters who have done any of the following at one of the voter centers established pursuant to this section:

(i) Registered to vote or updated his or her voter registration.

(ii) Received and voted a provisional ballot or replacement ballot.

(iii) Voted a ballot using equipment at the vote center.

(B) The index required by subparagraph (A) includes the same information for each voter as is required to be included on copies of the index of affidavits of voter registration that are posted

pursuant to Section 14294. The index required by subparagraph (A) shall be updated continuously during any time that a vote center is open in the jurisdiction.

(8) (A) Beginning 29 days before the day of the election, the county elections official mails to each registered voter a vote by mail ballot packet that includes a return envelope with instructions for the use and return of the vote by mail ballot.

(B) The county elections official delivers to each voter, with either the sample ballot sent pursuant to Section 13303 or with the vote by mail ballot packet, all of the following:

(i) A notice, translated in all languages required under subdivision (c) of Section 14201 and Section 203 of the federal Voting Rights Act of 1965 (52 U.S.C. Sec. 10101 et seq.), that informs voters of all of the following:

(I) An all-mailed ballot election is being conducted and each eligible voter will be issued a vote by mail ballot by mail.

(II) The voter may cast a vote by mail ballot in person at a vote center during the times and days specified in subparagraph (A) of paragraph (4) or on election day.

(III) No later than seven days before the day of the election, the voter may request the county elections official to send a vote by mail ballot in a language other than English pursuant to Section 203 of the federal Voting Rights Act of 1965 (52 U.S.C. Sec. 10101 et seq.) or a facsimile copy of the ballot printed in a language other than English pursuant to Section 14201.

(IV) No later than seven days before the day of the election, the voter may request the county elections official to send or deliver a ballot that voters with disabilities can read and mark privately and independently pursuant to the federal Help America Vote Act of 2002 (52 U.S.C. Sec. 20901 et seq.).

(ii) A list of the ballot dropoff locations and vote centers established pursuant to this section, including the dates and hours they are open. The list shall also be posted on the Internet Web site of the county elections official in a format that is accessible for people with disabilities pursuant to Section 11135 of the Government Code.

(iii) A postage-paid postcard that the voter may return to the county elections official for the purpose of requesting a vote by mail ballot in a language other than English or for the purpose of requesting a vote by mail ballot in an accessible format.

(C) Upon request, the county elections official provides written voting materials to voters with disabilities in an accessible format, as required by the federal Americans with Disabilities Act of 1990 (42 U.S.C. Sec. 12101 et seq.) and the federal Rehabilitation Act of 1973 (29 U.S.C. Sec. 701 et seq.).

(9) (A) The county elections official establishes a language accessibility advisory committee that is comprised of representatives of language minority communities. The committee shall be established no later than October 1 of the year before the first election conducted pursuant to this section. The committee shall hold its first meeting no later than April 1 of the year in which the first election is conducted pursuant to this section.

(B) The county elections official establishes a voting accessibility advisory committee that is comprised of voters with disabilities. The committee shall be established no later than October 1 of the year before the first election conducted pursuant to this section. The committee shall

hold its first meeting no later than April 1 of the year in which the first election is conducted pursuant to this section.

(C) A county with fewer than 50,000 registered voters may establish a joint advisory committee for language minority communities and voters with disabilities.

(10) (A) The county elections official develops a draft plan for the administration of elections conducted pursuant to this section in consultation with the public, including both of the following:

(i) One meeting, publicly noticed at least 10 days in advance of the meeting, that includes representatives, advocates, and other stakeholders representing each community for which the county is required to provide voting materials and assistance in a language other than English under subdivision (c) of Section 14201 and the federal Voting Rights Act of 1965 (52 U.S.C. Sec. 10101 et seq.).

(ii) One meeting, publicly noticed at least 10 days in advance of the meeting, that includes representatives from the disability community and community organizations and individuals that advocate on behalf of, or provide services to, individuals with disabilities.

(B) The county elections official, when developing the draft plan for the administration of elections conducted pursuant to this section, considers, at a minimum, all of the following:

(i) Vote center and ballot dropoff location proximity to public transportation.

(ii) Vote center and ballot dropoff location proximity to communities with historically low vote by mail usage.

(iii) Vote center and ballot dropoff location proximity to population centers.

(iv) Vote center and ballot dropoff location proximity to language minority communities.

(v) Vote center and ballot dropoff location proximity to voters with disabilities.

(vi) Vote center and ballot dropoff location proximity to communities with low rates of household vehicle ownership.

(vii) Vote center and ballot dropoff location proximity to low-income communities.

(viii) Vote center and ballot dropoff location proximity to communities of eligible voters who are not registered to vote and may need access to same day voter registration.

(ix) Vote center and ballot dropoff location proximity to geographically isolated populations, including Native American reservations.

(x) Access to accessible and free parking at vote centers and ballot dropoff locations.

(xi) The distance and time a voter must travel by car or public transportation to a vote center and ballot dropoff location.

(xii) The need for alternate methods for voters with disabilities for whom vote by mail ballots are not accessible to cast a ballot.

(xiii) Traffic patterns near vote centers and ballot dropoff locations.

(xiv) The need for mobile vote centers in addition to the number of vote centers established pursuant to this section.

(C) The county elections official publicly notices the draft plan for the administration of elections conducted pursuant to this section and accepts public comments on the draft plan for at least 14 days before the hearing held pursuant to subparagraph (D).

(D) (i) Following the 14-day review period required by subparagraph (C), the county elections official holds a public meeting to consider the draft plan for the administration of elections conducted pursuant to this section and to accept public comments. The meeting shall be publicly noticed at least 10 days in advance of the meeting on the Internet Web sites of the clerk of the county board of supervisors and the county elections official, or, if neither the clerk of the county board of supervisors nor the county elections official maintain an Internet Web site, in the office of the county elections official.

(ii) After the public hearing to consider the draft plan for the administration of elections conducted pursuant to this section and to accept public comments, the county elections official shall consider any public comments he or she receives from the public and shall amend the draft plan in response to the public comments to the extent he or she deems appropriate. The county elections official shall publicly notice the amended draft plan and shall accept public comments on the amended draft plan for at least 14 days before the county elections official may adopt the amended draft plan pursuant to subparagraph (E).

(E) (i) Following the 14-day review and comment period required by clause (ii) of subparagraph (D), the county elections official may adopt a final plan for the administration of elections conducted pursuant to this section, and shall submit the voter education and outreach plan that is required by clause (i) of subparagraph (I) to the Secretary of State for approval.

(ii) The Secretary of State shall approve, approve with modifications, or reject a voter education and outreach plan submitted pursuant to clause (i) of subparagraph (I) within 14 days after the plan is submitted by the county elections official.

(iii) The draft plan, the amended draft plan, and the adopted final plan for the administration of elections conducted pursuant to this section shall be posted on the Internet Web site of the county elections official in each language in which the county is required to provide voting materials and assistance under subdivision (c) of Section 14201 and the federal Voting Rights Act of 1965 (52 U.S.C. Sec. 10101 et seq.), and the Secretary of State's Internet Web site in a format that is accessible for people with disabilities pursuant to Section 11135 of the Government Code.

(F) Public meetings held pursuant to this paragraph shall, upon request, provide auxiliary aids and services to ensure effective communication with people with disabilities.

(G) Within two years of the adoption of the first plan for the administration of elections conducted pursuant to this section, the county elections official shall hold public meetings in accordance with the procedures described in subparagraphs (C) to (F), inclusive, to consider revising the first plan for the administration of elections conducted pursuant to this section. Every four years thereafter, the county elections official shall hold public meetings in accordance with the procedures described in subparagraphs (C) to (F), inclusive, to consider revising the plan for the administration of elections conducted pursuant to this section.

(H) (i) With reasonable public notification, a county elections official may amend a plan for the administration of elections conducted pursuant to this section no more than 120 days before the date of an election held pursuant to this section.

(ii) With reasonable public notification, a county elections official may amend a plan for the administration of elections conducted pursuant to this section more than 120 days before the date of an election held pursuant to this section if he or she provides at least 30 days to accept public comments on the amended plan.

(l) The plan for the administration of elections conducted pursuant to this section, includes all of the following:

(i) A voter education and outreach plan that is approved by the Secretary of State and that includes all of the following:

(I) A description of how the county elections official will use the media, including social media, newspapers, radio, and television that serve language minority communities for purposes of informing voters of the upcoming election and promoting the toll-free voter assistance hotline.

(II) A description of how the county elections official will use the media, including social media, newspapers, radio, and television for purposes of informing voters of the availability of a vote by mail ballot in an accessible format and the process for requesting such a ballot.

(III) A description of how the county elections official will have a community presence to educate voters regarding the provisions of this section.

(IV) A description of the accessible information that will be publicly available on the accessible Internet Web site of the county elections official.

(V) A description of the method used by the county elections official to identify language minority voters.

(VI) A description of how the county elections official will educate and communicate the provisions of this section to the public, including:

(ia) Communities for which the county is required to provide voting materials and assistance in a language other than English under subdivision (c) of Section 14201 and the federal Voting Rights Act of 1965 (52 U.S.C. Sec. 10101 et seq.). The county elections official shall hold at least one bilingual voter education workshop for each language in which the county is required to provide voting materials and assistance in a language other than English under subdivision (c) of Section 14201 and the federal Voting Rights Act of 1965 (52 U.S.C. Sec. 10101 et seq.).

(ib) The disability community, including organizations and individuals that advocate on behalf of, or provide services to, individuals with disabilities. The county elections official shall hold at least one voter education workshop to increase accessibility and participation of eligible voters with disabilities.

(VII) A description of how the county will spend the necessary resources on voter education and outreach to ensure that voters are fully informed about the election. This description shall include information about the amount of money the county plans to spend on voter education and outreach activities under the plan, and how that compares to the amount of money spent on voter education and outreach in recent similar elections in the same jurisdiction that were not conducted pursuant to this section.

(VIII) At least one public service announcement in the media, including newspapers, radio, and television, that serve English-speaking citizens for purposes of informing voters of the upcoming election and promoting the toll-free voter assistance hotline. Outreach made under

this subclause shall include access for voters who are deaf or hard of hearing and voters who are blind or visually impaired.

(IX) At least one public service announcement in the media, including newspapers, radio, and television, that serve non-English-speaking citizens for each language in which the county is required to provide voting materials and assistance under subdivision (c) of Section 14201 and the federal Voting Rights Act of 1965 (52 U.S.C. Sec. 10101 et seq.) for purposes of informing voters of the upcoming election and promoting the toll-free voter assistance hotline.

(X) At least two direct contacts with voters for purposes of informing voters of the upcoming election and promoting the toll-free voter assistance hotline. The two direct contacts are in addition to any other required contacts including, but not limited to, sample ballots and the delivery of vote by mail ballots.

(ii) A description of how a voter with disabilities may request and receive a blank vote by mail ballot and, if a replacement ballot is necessary, a blank replacement ballot that a voter with disabilities can mark privately and independently.

(iii) A description of how the county elections official will address significant disparities in voter accessibility and participation identified in the report required by subdivision (g).

(iv) A description of the methods and standards that the county elections official will use to ensure the security of voting conducted at vote centers.

(v) Information about estimated short-term and long-term costs and savings from conducting elections pursuant to this section as compared to recent similar elections in the same jurisdiction that were not conducted pursuant to this section.

(vi) To the extent available at the time of publication, information on all of the following:

(I) The total number of vote centers to be established.

(II) The total number of ballot dropoff locations to be established.

(III) The location of each vote center.

(IV) The location of each ballot dropoff location and whether it is inside or outside.

(V) A map of the locations of each vote center and ballot dropoff location.

(VI) The hours of operation for each vote center.

(VII) The hours of operation for each ballot dropoff location.

(VIII) The security and contingency plans that would be implemented by the county elections official to do both of the following:

(ia) Prevent a disruption of the vote center process.

(ib) Ensure that the election is properly conducted if a disruption occurs.

(IX) The number of election board members and the number of bilingual election board members and the languages spoken.

(X) The services provided to voters with disabilities, including, but not limited to, the type and number of accessible voting machines and reasonable modifications at each vote center.

(XI) The design, layout, and placement of equipment inside each voter center that protects each voter's right to cast a private and independent ballot.

(vii) A toll-free voter assistance hotline that is accessible to voters who are deaf or hard of hearing, and that is maintained by the county elections official that is operational no later than 29 days before the day of the election until 5 p.m. on the day after the election. The toll-free voter assistance hotline shall provide assistance to voters in all languages in which the county is required to provide voting materials and assistance under subdivision (c) of Section 14201 and the federal Voting Rights Act of 1965 (52 U.S.C. Sec. 10101 et seq.).

(J) The plan for the administration of elections conducted pursuant to this section is posted in a format that is accessible to persons with disabilities on the Internet Web site of the Secretary of State and on the Internet Web site of the county elections official.

(b) Notwithstanding Section 4000 or any other law, on or after January 1, 2018, the Counties of Calaveras, Inyo, Madera, Napa, Nevada, Orange, Sacramento, San Luis Obispo, San Mateo, Santa Clara, Shasta, Sierra, Sutter, and Tuolumne, and on or after January 1, 2020, any county may conduct a special election as an all-mailed ballot election under this section if all of the following apply:

(1) The county elections official has done either of the following:

(A) Previously conducted an election as an all-mailed ballot election in accordance with subdivision (a).

(B) Adopted a final plan for the administration of elections pursuant to clause (i) of subparagraph (E) of paragraph (9) of subdivision (a), in which case the county elections official shall complete all activities provided for in the voter education and outreach plan that is required by clause (i) of subparagraph (I) of paragraph (9) of subdivision (a) before the day of the special election.

(2) (A) On the day of election, from 7 a.m. to 8 p.m., inclusive, at least one vote center is provided for every 30,000 registered voters. If the jurisdiction is not wholly contained within the county, the county elections official shall make a reasonable effort to establish a vote center within the jurisdiction where the special election is held.

(B) Notwithstanding subparagraph (A), for a jurisdiction with fewer than 30,000 registered voters, the county elections official makes a reasonable effort to establish a vote center.

(3) (A) Not less than 10 days before the day of the election, for a minimum of eight hours per day, at least one vote center is provided for every 60,000 registered voters. If the jurisdiction is not wholly contained within the county, the county elections official shall make a reasonable effort to establish a vote center within the jurisdiction where the special election is held.

(B) Notwithstanding subparagraph (A), for a jurisdiction with fewer than 30,000 registered voters, the county elections official makes a reasonable effort to establish a vote center.

(4) (A) At least one ballot dropoff location is provided for every 15,000 registered voters. At least one ballot dropoff location shall be located within the jurisdiction where the special election is held. All ballot dropoff locations shall be open at least during regular business hours beginning not less than 28 days before the day of the election, and on the day of the election.

(B) Notwithstanding subparagraph (A), for a jurisdiction with fewer than 15,000 registered voters, at least one ballot dropoff location shall be provided.

(c) Except as otherwise provided in this section, the election day procedures shall be conducted in accordance with Division 14 (commencing with Section 14000).

(d) The county elections official may provide, at his or her discretion, additional ballot dropoff locations and vote centers for purposes of this section.

(e) The return of voted vote by mail ballots is subject to Sections 3017 and 3020.

(f) For the sole purpose of reporting the results of an election conducted pursuant to this section, upon completion of the ballot count, the county elections official shall divide the jurisdiction into precincts pursuant to Article 2 (commencing with Section 12220) of Chapter 3 of Division 12 and shall prepare a statement of the results of the election in accordance with Sections 15373 and 15374.

(g) (1) (A) Within six months of each election conducted pursuant to this section or Section 4007, the Secretary of State shall report to the Legislature, to the extent possible, all of the following information by categories of race, ethnicity, language preference, age, gender, disability, permanent vote by mail status, historical polling place voters, political party affiliation, and language minorities as it relates to the languages required under subdivision (c) of Section 14201 and Section 203 of the federal Voting Rights Act of 1965 (52 U.S.C. Sec. 10101 et seq.):

(i) Voter turnout.

(ii) Voter registration.

(iii) Ballot rejection rates.

(iv) Reasons for ballot rejection.

(v) Provisional ballot use.

(vi) Accessible vote by mail ballot use.

(vii) The number of votes cast at each vote center.

(viii) The number of ballots returned at ballot dropoff locations.

(ix) The number of ballots returned by mail.

(x) The number of persons who registered to vote at a vote center.

(xi) Instances of voter fraud.

(xii) Any other problems that became known to the county elections official or the Secretary of State during the election or canvass.

(B) The report required by subparagraph (A) shall be posted on the Internet Web site of the Secretary of State in a format that is accessible for people with disabilities pursuant to Section 11135 of the Government Code.

(C) The report required by subparagraph (A) shall be submitted to the Legislature in compliance with Section 9795 of the Government Code.

(D) If an election is conducted pursuant to this section, the county shall submit, to the extent possible, to the Secretary of State the information needed for the Secretary of State to prepare the report required by subparagraph (A).

(2) The county elections official shall post on his or her Internet Web site a report that compares the cost of elections conducted pursuant to this section to the costs of previous elections. The report shall be posted in a format that is accessible for people with disabilities pursuant to Section 11135 of the Government Code.

(h) The Secretary of State shall enforce the provisions of this section pursuant to Section 12172.5 of the Government Code.

(i) For purposes of this section, "disability" has the same meaning as defined in subdivisions (j), (m), and (n) of Section 12926 of the Government Code.

SEC. 4. Section 4006 is added to the Elections Code, to read:

4006. For any election conducted pursuant to Section 4005, the county elections official shall make a reasonable effort to inform a voter of either of the following:

(a) If the voter's vote by mail ballot envelope is missing a signature.

(b) How the voter can correct the missing signature.

SEC. 5. Section 4007 is added to the Elections Code, to read:

4007. (a) On or after January 1, 2020, the County of Los Angeles may conduct any election as a vote center election if all of the following apply:

(1) The county elections official complies with all the provisions of subdivision (a) of Section 4005 that are not inconsistent with this section.

(2) Every permanent vote by mail voter receives a ballot.

(3) At least two ballot dropoff locations are provided within the jurisdiction where the election is held or the number of ballot dropoff locations are fixed in a manner so that there is at least one ballot dropoff location provided for every 15,000 permanent vote by mail registered voters within the jurisdiction where the election is held, as determined on the 88th day before the day of the election, whichever results in more ballot dropoff locations.

(4) Within the jurisdiction where the election is held, at least one vote center is provided for each city that has at least 1,000 registered voters according to the official report of registration submitted by the county elections official to the Secretary of State before the last general election.

(5) On the day of the election, from 7 a.m. to 8 p.m., inclusive, and on each of the three days before the election, for a minimum of eight hours per day, at least one vote center is provided for every 7,500 registered voters within the jurisdiction where the election is held, as determined on the 88th day before the day of the election. At least 90 percent of the number of vote centers required by this subparagraph shall be open for all four days during the required times. Up to 10 percent of the number of vote centers required by this subparagraph may be open for less than four days if at least one vote center is provided for every 7,500 registered voters on each day.

(6) Beginning 10 days before the day of the election and continuing up to and including the fourth day before the day of the election, for a minimum of eight hours per day, at least one vote center is provided for every 30,000 registered voters within the jurisdiction where the election is held, as determined on the 88th day before the election.

(7) Precincts with fewer than 500 registered voters are designated as all vote-by-mail ballot precincts.

(8) Voters residing in a legislative or congressional district that lies partially within the County of Los Angeles and that also lies within another county that is conducting an election pursuant to subdivision (a) of Section 4005 receive a vote by mail ballot if they are eligible to vote in that election.

(9) Voters in a precinct that is either more than a 30 minute travel time from a vote center or in which the polling place in the most recent statewide general election is more than 15 miles from the nearest vote center are mailed a vote by mail ballot.

(10) The vote centers are located within a reasonable travel time of registered voters.

(11) The county elections official conducts a service area analysis of the vote center plans, identifies services gaps, and publicly reports those findings.

(b) Notwithstanding Section 4000 or any other law, on or after January 1, 2020, the County of Los Angeles may conduct a special election as an all-mailed ballot election pursuant to subdivision (b) of Section 4005.

(c) No later than four years after conducting the first vote center election pursuant to this section, the County of Los Angeles may conduct all-mailed ballot elections pursuant to Section 4005 and shall not conduct vote center elections pursuant to this section.

SEC. 6. Section 4008 is added to the Elections Code, to read:

4008. (a) The Secretary of State shall establish a taskforce that includes representatives of all of the following:

(1) County elections officials.

(2) Individuals with demonstrated language accessibility experience for languages covered under the federal Voting Rights Act of 1965 (52 U.S.C. Sec. 10101 et seq.).

(3) The disability community and community organizations and individuals that advocate on behalf of, or provide services to, individuals with disabilities.

(4) Experts with demonstrated experience in the field of elections.

(b) The taskforce shall review elections conducted pursuant to Section 4005 or 4007 and provide comments and recommendations to the Legislature within six months of each election conducted pursuant to Section 4005 or 4007.

(c) This section shall remain in effect only until January 1, 2022, and as of that date is repealed, unless a later enacted statute, that is enacted before January 1, 2022, deletes or extends that date.

SEC. 7. Section 15320 of the Elections Code is amended to read:

15320. Vote by mail ballots and mail ballot precinct ballots returned to the elections office and to the polls on election day that are not included in the semifinal official canvass phase of the election, including any ballots returned to another jurisdiction in the state and forwarded to the elections official who issued the ballot pursuant to Section 3017, shall be processed and counted during the official canvass in the manner prescribed by Chapter 2 (commencing with Section 15100) and pursuant to the requirements of Section 3019.

SEC. 8. Section 2.5 of this bill incorporates amendments to Section 3017 of the Elections Code proposed by both this bill and Assembly Bill 1921. It shall only become operative if (1) both bills are enacted and become effective on or before January 1, 2017, (2) each bill amends Section 3017 of the Elections Code, and (3) this bill is enacted after Assembly Bill 1921, in which case Section 2 of this bill shall not become operative.

SEC. 9. If the Commission on State Mandates determines that this act contains costs mandated by the state, reimbursement to local agencies and school districts for those costs shall be made pursuant to Part 7 (commencing with Section 17500) of Division 4 of Title 2 of the Government Code.