

# COUNTY NG SAN MATEO

## BATAS SA PAGPILI NG BOTANTE NG CALIFORNIA

### PLANO SA PANGANGASIWA NG HALALAN – BURADOR



**Opisina ni Mark Church**

**Punong Opisyal sa mga Halalan at Tagatasa-Klerk-Tagatala ng County**

**Dibisyon ng Pagpaparehistro at mga Halalan**

**40 Tower Road, San Mateo, CA 94402 • P: 650.312.5222 • F: 650.312.5348**

**Email: [registrar@smcare.org](mailto:registrar@smcare.org) • Web: [www.shapethefuture.org](http://www.shapethefuture.org) • Sundan kami sa Twitter [@smcvote](https://twitter.com/smcvote)**



OFFICE OF  
**ASSESSOR-COUNTY CLERK-  
RECORDER & ELECTIONS**  
COUNTY OF SAN MATEO

**MARK CHURCH**  
ASSESSOR-COUNTY CLERK-  
RECORDER & CHIEF ELECTIONS OFFICER

Ika-31 ng Disyembre, 2017

Mahal Naming mga Kapwa Botante:

Ikinalulugod kong isumite sa inyo ang Burador na Plano sa Pangangasiwa ng County ng San Mateo para sa pagpapatupad ng Batas sa Pagpili ng Botante ng California (Panukalang-batas 450 ng Senado). Ang napakahalagang batas na ito ay nag-aawtorisa sa 14 na county, kabilang ang San Mateo, na magsagawa ng anumang halalan bilang Lahat ay Ipinakokoreong Balota/Sentro ng Pagboto na Halalan, na magsisimula sa Enero 2018. Ipinagmamalaki ng County ng San Mateo na maging isa sa unang limang county sa estado na magsasagawa ng Pambuong-estadong Tuwirang Primaryang Halalan ng Ika-5 ng Hunyo, 2018 sa ilalim ng mga tadhana ng Batas sa Pagpili ng Botante ng California.

Ang Burador na Plano sa Pangangasiwa ng Halalan (Election Administration Plan, EAP) ng County ng San Mateo ay binuo na may hangaring magkaloob sa publiko ng detalyadong impormasyon tungkol sa pangangasiwa ng mga halalan sa ilalim ng Batas sa Pagpili ng Botante ng California. Kabilang din sa EAP ang Plano sa Edukasyon at Pag-abot ng County na detalyadong nagbabalangkang ng mga plano sa edukasyon at pag-abot ng County at ang aming mga pagsisikap na itaas ang paggamit ng lahat ng botante, lalo na ang may kapansanan at mga minorya sa wika.

Ang Burador na EAP ay binuo sa pakikipagsangguni sa publiko at kabilang ang mga komentong natanggap sa aming mga pampublikong pagdinig sa mga miyembro ng komunidad ng may kapansanan at minorya sa wika. Kayo ay taos-pusong iniimbitahan sa isang pampublikong pagdinig upang talakayin ang Burador na EAP sa:

Huwebes, Ika-18 ng Enero, 2018, 1 p.m.  
Mga Silid ng Lupon ng mga Superbisor  
Hall of Justice  
400 County Center, Redwood City

Kayo ay maaari ring magbigay ng mga komento sa pamamagitan ng email, koreo at telepono bago dumating ang pagdinig.

Mangyaring huwag mag-atubiling kontakin ako o sinuman sa aming mga tauhan sa 650.312.5222 o registrar@smcare.org kung kayo ay may mga tanong tungkol sa Batas sa Pagpili ng Botante o sa aming Burador na EAP. Inaasahan namin na makikita kayo sa ika-18 ng Enero, 2018.

Matapat,

Mark Church

40 Tower Road, San Mateo, CA 94402

P 650.312.5222 F 650.312.5348 email registrar@smcare.org web www.shapethefuture.org

**County ng San Mateo**  
**Batas sa Pagpili ng Botante ng California**  
Talaan ng mga Nilalaman

Plano sa Pangangasiwa ng Halalan – Burador

Pangkalahatang-tanaw.....	1
Mga Balota ng Pagboto sa Pamamagitan ng Koreo .....	2
Mga Lokasyon ng Sentro ng Pagboto at Hulugan ng Balota .....	2
Mga Sentro ng Pagboto .....	2
Pormula ng Sentro ng Pagboto.....	3
Mga Kahong Hulugan ng Balota .....	3
Teknolohiya ng Pagboto.....	4
Digital na “Bumoto Ako” na Idinidikit .....	4
Epekto sa Pananalapi .....	5
Buod .....	5

Plano sa Edukasyon at Pag-abot sa Botante

Pangkalahatang-tanaw.....	9
Mga Botanteng Di-Ingles ang Pinili .....	9
Mga Botanteng May Kapansanan .....	10
Pagtugon sa mga Pagkakaiba sa Paglahok.....	10
Mga Tuwirang Kontak sa Botante .....	10
Mga Pahayag ng Serbisyo sa Publiko.....	11
Badyet .....	11

**Mga Dagdag**

Mga Lokasyon ng mga Iminumungkahing Sentro ng Pagboto at Hulugan ng Balota .....	15
Lokasyon ng mga Iminumungkahing Sentro ng Pagboto .....	17
Mga Lokasyon ng Kahong Hulugan ng Balota .....	18
Mapa ng mga Lokasyon ng Iminumungkahing Sentro ng Pagboto at Hulugan ng Balota .....	19
Kaayusan ng Sentro ng Pagboto (Iminumungkahi).....	21
Komite sa Pagpapayo sa Kakayahan sa Pagboto at Komite sa Pagpapayo sa Paggamit ng Wika .....	25
Komite sa Pagpapayo sa Kakayahan sa Pagboto .....	27
Komite sa Pagpapayo sa Paggamit ng Wika .....	28
Mga Opisyal sa Halalan .....	29
Mga Kasama sa Komunidad .....	33
Mga Ginaganap sa Komunidad .....	45
Mga Darating na Ginaganap sa Komunidad .....	47
Halimbawa ng Kalendaryo ng Ginaganap sa Taglamig/Tagsibol ng 2015 – 2016.....	48

Mga Kasama sa Media .....	49
Mga Mapa .....	53
Mga Ruta ng Pampublikong Transportasyon .....	55
Mga Lugar na Mababa ang Paggamit ng Pagboto sa Pamamagitan ng Koreo .....	56
Populasyon .....	57
Mga Komunidad ng Minorya sa Wika .....	58
Mga Botanteng may Kapansanan .....	59
Pagiging May-ari ng Sasakyan ng Sambahayan.....	60
Mga Lugar na May mga Indidibdwal na Naghihirap .....	61
Mga Lugar na May mga Karapat-dapat na Botante na Hindi Nakarehistro para Makaboto.....	62
Batas sa Pagpili ng Botante ng California .....	63

# **COUNTY NG SAN MATEO**

## **PLANO SA PANGANGASIWA NG HALALAN – BURADOR**

### **PANGKALAHATANG-TANAW**

Ang Panukalang-batas 450 ng Senado, kilala rin bilang Batas sa Pagpili ng Botante (Voter's Choice Act, VCA) ng California, ay pinirmahan upang maging batas noong ika-29 ng Setyembre, 2016, nag-aawtorisa sa 14 na county, kabilang ang San Mateo, na magsagawa ng anumang halalan bilang Lahat ay Ipinakokoreong Balota/Sentro ng Pagboto na halalan na magsisimula sa 2018. Ang batas na ito ay bahagi ng isang malawak ng kalipunan ng mga reporma sa halalan na idinisenyo upang itaas ang paglahok ng botante, itaas ang pakikipagtulungan ng botante, at palawakin ang mga opsyon sa pagboto, pundamental na binabago ang paraan na isasagawa ang mga halalan sa County ng San Mateo at mga kalahok na hurisdiksiyon.

Ang County ng San Mateo ay nasa unahan ng pagsasagawa ng Lahat ay Ipinakokoreong Balota na mga Halalan sa Estado ng California, na may higit sa 67% ng ating mga nakarehistrong botante na pumiling maging permanenteng mga botante ng Pagboto sa Pamamagitan ng Koreo. Ang pagpasa ng VCA ay naimpluwensiyahan ng matagumpay na Lahat ay Ipinakokoreong Balota na Halalan ng Ika-3 ng Nobyembre, 2015 ng County ng San Mateo, isinagawa sa ilalim ng awtoridad ng Panukalang-batas ng Asembleya 2028. Marami sa mga rekomendasyon at pamamaraan na napapaloob sa aming Ulat na AB 2028 sa Lehislatura ng Estado at sa Kalihim ng Estado ay isinama sa VCA.

Ang Opiyal sa mga Halalan ng County ay inatasan sa ilalim ng VCA na maghanda ng isang burador na Plano sa Pangangasiwa ng Halalan (EAP) para sa pangangasiwa ng mga halalan sa ilalim ng bagong batas. Itong Burador na EAP ay isang pagtutulungan na inihanda sa pakikipagsangguni sa ating mga kasama sa komunidad at mga apektado. Isinama nito ang marami sa mga rekomendasyong nakuha mula sa ating mga pampublikong pagdinig na isinagawa noong ika-12 ng Oktubre, 2017 at ika-16 ng Oktubre, 2017, sa ating mga komunidad ng minorya sa wika at may kapansanan.

Ang publiko ay muling iniimbitahan na mag-alay ng mga karagdagang komento sa Burador na EAP sa ating Pampublikong Pagdinig sa VCA na gaganapin sa Huwebes, ika-18 ng Enero, 2018, sa 1 p.m. Ang Pampublikong Pagdinig ay gaganapin sa mga Silid ng Lupon ng mga Superbisor, 400 County Center, Redwood City. Sa pagtatapos ng Pampublikong Pagdinig at 14-araw na panahon ng komento, ang Pinal na EAP ng County ay pormal na pagtitibayin at isusumite sa Kalihim ng Estado para sa pag-aproba.

Upang patuloy na pahasayin ang modelo ng mga halalan ng VCA, ang batas ay nag-aatas sa Punong Opisyal sa mga Halalan na magsagawa ng mga karagdagang pampublikong pagdinig sa loob ng dalawang taon ng pagsasagawa ng unang halalan at bawat apat na taon pagkaraan, upang isaalang-alang ang mga pagbabago sa EAP.

Ang Burador na EAP ng County ng San Mateo ay nagkakaloob ng maraming mahalagang impormasyon sa publiko tungkol sa pagpapatupad ng VCA. Itong Burador na EAP ay magkakaloob ng isang maikling pangkalahatang-tanaw sa proseso ng balota ng Pagboto sa Pamamagitan ng Koreo, sa iminumungkahing mga lokasyon ng mga Sentro ng Pagboto ng County at mga Hulugan ng Balota, teknolohiya ng mga halalan na ilalagay, at isang paglalarawan ng ating Plano sa Edukasyon at Pag-abot sa Botante.

## **MGA BALOTA NG PAGBOTO SA PAMAMAGITAN NG KOREO**

Sa ilalim ng modelo ng VCA, lahat ng nakarehistrong botante ay padadalhan ng isang balota 29 araw bago ang halalan, na may sobrang bayad na ang selyo upang ibalik ang balota. Ang mga botante ay maaaring humiling ng isang balota ng Pagboto sa Pamamagitan ng Koreo sa isang wikang iba sa Ingles. Ang mga botanteng may kapansanan, gayon din ang botanteng nasa ibang bansa, mga tauhan ng militar, at mga asawa ng mga tauhan ng militar ay maaaring gumamit ng Sistema ng Madaling Magamit na Pagboto sa Pamamagitan ng Koreo ng County ng San Mateo, na nagpapahintulot sa mga kuwalipikadong botante na makuha at markahan ang kanilang balota sa isang mababasa sa screen na anyo sa isang personal na kompyuter.

## **MGA LOKASYON NG SENTRO NG PAGBOTO AT HULUGAN NG BALOTA**

Ang VCA ay nagtatatag ng detalyadong mga pamantayan at pormula para sa lokasyon ng mga Sentro ng Pagboto at mga lokasyon ng Hulugan ng Balota sa buong County. Ang batas ay nag-aatas na ang mga Sentro ng Pagboto at Hulugan ng Balota ay mapupuntahan ng mga botanteng may kapansanan, matatagpuan sa malapit sa mga sentro ng populasyon, pampublikong transportasyon at malapit sa mga komunidad ng maliit ang kita at minorya sa wika.

Ang mga lokasyon ng Sentro ng Pagboto at Hulugan ng Balota ay pinili sa pakikipagsangguni sa Komite sa Pagpapayo sa Kakayahan sa Pagboto (Voting Accessibility Advisory Committee, VAAC) at ng Komite sa Pagpapayo sa Paggamit sa Wika (Language Accessibility Advisory Committee, LAAC). Ang programa sa pagmapa ng Sistema ng Impormasyon sa Heograpiya (Geographic Information System, GIS) at mga Datos ng Sensus ng U.S. ay ginamit din upang matiyak na ang mga lokasyon ay napakalapit sa mga botante.

***Mga Sentro ng Pagboto:*** Ang mga Sentro ng Pagboto ay magpapatakbo nang katulad ng mga lugar ng botohan, magpapahintulot sa mga botante na ipatala ang kanilang mga balota nang personal, sa papel man, sa isang eSlate o sa isang Yunit ng Paggamit ng May Kapansanan. Hindi tulad ng mga lugar ng botohan, gayunman, maaaring botohan ng mga botante ang kanilang mga balota sa alinmang Sentro ng Pagboto sa buong county. Magagawa rin ng mga botante na magparehistro para makaboto o isapanahon ang kanilang pagpaparehistro sa alinmang Sentro ng Pagboto. Ang mga botanteng hindi nakapagparehistro bago ang pagsasara ng pagpaparehistro (14 araw bago ang halalan), ay maaaring May-kondisyong Magparehistro para Makaboto (Conditionally Register to Vote, CVR) sa alinmang Sentro ng Pagboto at botohan ang isang pansamantalang balota hanggang sa Araw ng Halalan.

Ang mga Sentro ng Pagboto ay magkakaroon ng daan sa Sistema ng Pamamahala ng Halalan (Election Management System, "EMS") ng County, nagpapahintulot sa mga tauhan ng Sentro ng Pagboto na beripikahin, sa tunay na panahon, ang katayuan sa pagboto ng bawat botante.

Ang mga Sentro ng Pagboto ay magtataglay ng hanggang 10 elektronikong makina ng pagboto na eSlate, kabilang ang tatlong Yunit ng Paggamit ng May Kapansanan. Lahat ng Sentro ng Pagboto ay sumusunod sa ADA, at ang mga tauhan ng mga Halalan ay pupunta sa lugar upang tulungan ang mga botante sa mga ispesipikong pangangailangan.

Ang mga plano para sa seguridad at hindi inaasahang pangyayari ay itatatag upang hadlangan ang paggambala sa pagboto, at upang tiyakin na ang halalan ay wastong isinasagawa. Kapag ang mga Sentro ng Pagboto ay hindi pinatatakbo, titiyakin ang seguridad ng lugar at kagamitan sa pamamagitan ng subok at matatag na mga protokol sa seguridad tulad ng malinaw na makikita ang paglikot na mga pansara at protektadong mga pasilidad ng pag-iimbak.

Ang isang halimbawang kaayusan ng Sentro ng Pagboto ay ipinagkakaloob sa mga Dagdag.

**Pormula ng Sentro ng Pagboto:** Ang mga Sentro ng Pagboto ay magbubukas nang magkakasunod, na mas malaking bilang ng mga Sentro ng Pagboto ang patatakbuhan habang nalalapit ang halalan. Ipagpapatuloy ng County ang gawain na pagbubukas ng tatlong Sentro ng Pagboto sa South San Francisco, San Mateo at Redwood City, 29 araw bago ang Halalan. Ang mga karagdagang Sentro ng Pagboto ay magbubukas 10 araw bago ang halalan, at lahat ng Sentro ng Pagboto ay lubos na patatakbuhan simula sa ikatlong araw bago ang halalan.

Ang VCA ay nagtatag ng sumusunod na pormula para sa pagpapasiya ng mga lokasyon ng mga Sentro ng Pagboto sa buong County. Ang mga bilang na ito ay batay sa isang tantiya ng 390,000 nakarehistrong botante para sa Halalan ng Hunyo 2018:

Mga araw bago ang Araw ng Halalan	Bilang ng Nakarehistro Mga Botante Kada Sentro ng Pagboto	Mga Sentro ng Pagboto na Magagamit ng Publiko
10	50,000	8
3	10,000	39

Lahat ng Sentro ng Pagboto ay bubuksan nang hindi kukulangin sa walong oras kada araw simula sa 10 araw bago ang Halalan, kabilang ang mga araw ng pagtatapos ng linggo at mga piyesta opisyal, at bukas mula 7:00 a.m. hanggang 8:00 p.m. sa Araw ng Halalan.

Bawat Sentro ng Pagboto ay magkakaroon ng hindi kukulangin sa limang manggagawa sa halalan. Ang County ay magsisikap na kumuha ng isa o higit na nagsasalita ng Kastila at isang nagsasalita ng Tsino na manggagagawa sa halalan sa bawat Sentro ng Pagboto upang magkaloob ng tulong sa wika.

**Mga Kahong Hulugan ng Balota:** Ang isa o higit na kahong Hulugan ng Balota ay iniaatas para sa bawat 15,000 nakarehistrong botante sa County para sa inaasahang kabuuan na 26 na kahong Hulugan ng Balota para sa Halalan ng Ika-5 ng Hunyo, 2018. Ang mga kahong Hulugan ng Balota na ito ay magagamit nang hindi kukulangin sa 28 araw bago ang Araw ng Halalan at bukas sa mga regular na oras ng trabaho. Ang isang kahong Hulugan ng Balota sa labas ng Dibisyon ng Pagpaparehistro at Halalan, sa 40 Tower Road, San Mateo, at tatlong karagdagang lugar na pagpapasiyahan, ay bubuksan dalawampung-apat na oras sa isang araw.

Ang bawat isa ng 20 Munisipyo ng Lungsod at Bayan sa County ng San Mateo ay magkakaroon ng isang nakakandang kahon ng balota na magagamit para sa paghuhulog ng mga balota sa panahon ng kanilang mga regular na oras ng trabaho. Maaari ring dalhin ng mga botante ang isang binotohang balota sa isang Sentro ng Pagboto, Tanggapan ng Koreo o kahon ng koreo ng USPS.

Ang isang listahan ng mga iminumungkahing lokasyon ng Sentro ng Pagboto at Hulugan ng Balota, kasama ang isang mapa ng Sentro ng Pagboto at Hulugan ng Balota, ay kasama sa Mga Dagdag.

### **TEKNOLOHIYA NG PAGBOTO**

Ang County ay maglalagay ng ating kasalukuyang Hart InterCivic na Elektronikong Sistema ng Pagboto at mga makina ng eSlate na pagboto sa lahat ng Sentro ng Pagboto sa Halalan ng Ika-5 ng Hunyo, 2018. Sa bawat Sentro ng Pagboto, ang isang network ng mga personal na kompyuter ay iuugnay sa Sistema ng Pamamahala ng Halalan (Election Management System, EMS) ng County sa pamamagitan ng isang protektadong koneksyon. Ang EMS ng County ay nakakonekta sa tipunan ng mga datos sa pagpaparehistro ng botante na pinangangasiwaan ng Estado ng California, VoteCal. Ito ay magkakaloob ng daan sa mga datos sa pagpaparehistro ng botante, magbibigay ng kakayahan sa mga tauhan ng Sentro ng Pagboto upang malaman ang katayuan sa pagpaparehistro at botante ng bawat botante sa tunay na panahon. Ang sistemang ito ay matagumpay na ginamit sa Lahat ay Ipinakokoreong Balota na Halalan ng Ika-3 ng Nobyembre, 2015.

Ang batay sa pangangailangan na paglimbag ng balota na mga printer ay gagamitin sa unang pagkakataon sa mga Halalan ng County upang magkaloob sa mga botante ng ispespikong mga istilo ng balota para sa kanilang mga presinto ng pagboto. Bilang karagdagan, ang batay sa pangangailangan na paglimbag ng balota na mga printer ay nagbabawas ng pagbili at paglimbag ng mga karagdagang balota na kailangan upang bigyang-daan ang mahihirap na istilo ng balota.

### **DIGITAL NA “BUMOTO AKO” NA IDINIDIKIT**

Ang isa sa pinakatanyag na mga bagay na hinihiling mula sa bumobotong publiko sa Araw ng Halalan ay ang ating “Bumoto Ako” na idinidikit na may pagmamalaking nagbibigay-alam na ang botante ay lumahok sa halalan. Ang mga “Bumoto Ako” na idinidikit ay napakatanyag kaya marami sa aming permanenteng botante ng Pagboto sa Pamamagitan ng Koreo (Vote by Mail, VBM) ay dinadala ang kanilang mga balota sa mga lugar ng botohan para makuha lamang ang kanilang mga idinidikit.

Dahilan sa katanyagan ng “Bumoto Ako” na idinidikit, ang ating County ay bubuo ng isang digital na “Bumoto Ako” na idinidikit na maaaring kopyahin at idikit sa mga pahina sa social media ng mga botante at isama sa kanilang online na mga digital na pirma. Ito ay magpapahintulot sa mga botante na nakapagmamalaking ipagbigay-alam sa mundo na sila ay bumoto sa halalan. Ang digital na “Bumoto Ako” na idinidikit ay magbibigay-alam rin sa mga taon ng pagboto na ang botante ay lumahok sa mga naunang halalan. Ang isang natatanging banner ay bubuuin na nagpapabatid ng bilang ng magkakasunod na taon na sila ay bumoto. Ito ay may pagmamalaking kikilala sa mga botante para sa kanilang mga taon ng paglahok sa demokratikong proseso.

Ang digital na “Bumoto Ako” na idinidikit ay makukuha sa pamamagitan ng pagkakaugnay na “Check my Registration/Access my Election Materials/View My Voter Information Pamphlet/Track My Ballot” sa [www.shapethefuture.org](http://www.shapethefuture.org).



## **EPEKTO SA PANANALAPI**

Ang epekto sa pananalapi ng VCA at kaugnay na mga iniuutos ng batas ay hindi alam sa panahong ito.

Ang Pambuong-estadong Tuwirang Primaryang Halalan ng Ika-5 ng Hunyo, 2018 ay magiging una na may ganitong uri, ang pareho ay batay sa mga tadhana ng bagong Lahat ay Ipinakokoreo/Sentro ng Pagboto na modelo at mga bagong batas sa halalan na lubos na ipatutupad para sa halalan ng Hunyo 2018. Ang pinagsamang epekto ng mga bagong batas na ito na galing online kasabay ng isang pangunahing Panggovernador na Primaryang Halalan ay maaaring magtaas sa mga gastos sa halalan para sa county sa buong estado. Sa positibong panig, ang VCA sa paglipas ng panahon, ay dapat magkaroon ng epekto ng pagpapagaan ng marami sa mga karagdagang gastos na kaugnay ng mga bagong ipinag-uutos ng batas.

Ang isa sa ating mga pangunahing ikinababahala na nakakaapekto sa mga gastos sa halalan, ay ang pagpapatupad ng Panukalang-batas ng Senado 415 (SB 415), ang Batas sa mga Karapatan sa Paglahok ng Botante ng California. Ang SB 415 ay naglipat ng mga hurisdiksiyon na nagsasagawa ng di-pares na numero ng taon na mga halalan patungo sa pares na numero ng taon na mga halalan bago lumampas ang 2020. Ito ay magrerresulta sa malaking pagtaas sa bilang ng mga huridiksiyon na lalahok sa Halalan ng Nobyembre 2018. Ang pagbabagong ito ay hahantong sa mas malaking pares ang numero ng taon na mga halalan, magrerresulta sa mas malaking pamphlet ng halimbawang balota, mas matagal at mas masalimuot na mga opisyal na balota, at mas maraming istilo ng balota.

Ang AB 1436 na Batas sa May-kondisyong Pagpaparehistro ng Botante at AB 1461 na Batas sa Bagong Motor na Botante ng DMV, ay magtataas ng pagpaparehistro ng botante at ng kabuuang bilang ng mga botante na boboto. Ang pagdagsa ng mga bagong botante ay magdaragdag ng mga karagdagang gastos sa pangangasiwa ng mga halalan.

Bilang karagdagan, ang VCA mismo ay magtatamo sa una ng panimulang mga gastos na maaaring magtaas ng mga gastos sa halalan sa maikling panahon. Ang mga Sentro ng Pagboto ay magbubukas nang mas matagal at patatakbuhin ng mga empleyado ng County sa mas mataas na orasang bayad kaysa pangkaraniwang mga manggagawa sa botohan. Ang mga tauhan ng Sentro ng Pagboto ay mangangailangan din ng karagdagang pagsasanay upang pamahalaan ang pagiging masalimuot at iniaatas na teknolohiya ng mga Sentro ng Pagboto. Ang paglikha ng maraming protektadong koneksyon sa pagitan ng mga Sentro ng Pagboto at ng tipunan ng mga datos sa pagpaparehistro ng botante ay magrerresulta sa mga paggasta dahil sa bagong kagamitan, kaayusan, pagsusuri, at suporta. Inaasahan namin na ang mga gastos na ito sa huli ay mapagagaan ng malaking pagbawas sa bilang ng mga makina sa pagboto, mga gastos sa paggawa at puhunan. Ang mga halalan sa hinaharap ay mag-aatas din ng mas kaunting pag-abot at edukasyon sa botante, dahil ang mga botante ay magiging mas pamilyar sa bagong modelo ng halalan, na higit na magbababa ng mga gastos.

## **BUOD**

Ang Batas sa Pagpili ng Botante ng California ay isang napakahalagang batas na pundamental na magbabago sa paraan na isinasagawa ang mga halalan sa Estado ng California. Ang matagumpay na karanasan ng County ng San Mateo sa Pambuong-county na Lokal na Pinagsamang Lahat ay Ipinakokoreong Balota na Halalan ng Ika-3 ng Nobyembre, 2015 ay nagkakaloob sa atin ng natatanging pundasyon upang matagumpay na pangasiwaan ang mga

halalan sa ilalim ng Lahat ay Ipinakokoreong Balota/Sentro ng Pagboto na modelo ng halalan ng VCA. Ang matagumpay na pagpapatupad nitong bagong paraan ng pagsasagawa ng halalan ay nagkakaloob ng napakaraming benepisyo at pagkakataon sa mga botante ng County at lumalahok na hurisdiksiyon. Ang mga distrito ng paaralan, munisipalidad at espesyal na distrito, ay nakikinabang sa pamamagitan ng tumaas na pagiging episyente at nabawang masisingil na mga gastos na resulta ng bagong Lahat ay Ipinakokoreo na Balota/Sentro ng Pagboto na modelo ng halalan. Ang bagong modelo ng halalan ay magkakaroon ng positibong epekto ng pagtataas ng paglahok ng botante, magkakaloob ng mas malaking kakayahan ng mga botanteng may kapansanan, pagpapahusay ng ating mga sistema at teknolohiya ng pagboto, at pagpapalakas ng seguridad ng ating impra-istruktua ng mga halalan.

Ang County ng San Mateo ay umaasa sa pagpapatuloy ng ating tradisyon ng kahusayan at inobasyon sa pamamagitan ng matagumpay na pagpapatupad ng Batas sa Pagpili ng Botante ng California.

**COUNTY NG SAN MATEO**  
**BATAS SA PAGPILI NG BOTANTE NG CALIFORNIA**

**PLANO SA EDUKASYON**  
**AT**  
**PAG-ABOT SA BOTANTE**



**Opisina ni Mark Church**  
**Punong Opisyal sa mga Halalan at Tagatasa-Klerk-Tagatala ng County**  
**Dibisyon ng Pagpaparehistro at mga Halalan**  
**40 Tower Road, San Mateo, CA 94402 • P: 650.312.5222 • F: 650.312.5348**  
**Email: [registrar@smcare.org](mailto:registrar@smcare.org) • Web: [www.shapethefuture.org](http://www.shapethefuture.org) • Follow us on Twitter @smcvote**

# **PLANO SA EDUKASYON AT PAG-ABOT SA BOTANTE**

## **PANGKALAHATANG-TANAW**

Ang Batas sa Pagpili ng Botante ng California (VCA) ay nag-aatas sa County na bumuo ng isang Plano sa Edukasyon at Pag-abot sa Botante na nagbibigay ng impormasyon sa mga botante sa lahat ng aspeto ng VCA, kabilang ang mga lokasyon ng Sentro ng Pagboto at Hulugan ng Balota, at impormasyon na ispesipiko sa mga botanteng may kapansanan at mga botanteng hindi Ingles ang pinili. Ang mga pampublikong pulong ay isasagawa sa pamamagitan ng mga organisasyong pangkomunidad at mga indibidwal na nagtataguyod sa ngalan ng, o nagkakaloob ng mga serbisyo sa mga grupong ito. Ang County ay magsasagawa rin ng maraming pampublikong palihan sa edukasyon, na may mga nakahandang tagasalin para sa mga nagsasalita ng wikang Kastila, Tsino, Filipino, at Koreano. Lahat ng pampublikong ginaganap na isinagawa ng County ay angkop sa ADA.

Ang County ay nagtrabahong kasama ng Komite sa Pagpapayo sa Kakayahan sa Pagboto (Voting Accessibility Advisory Committee, VAAC) at Komite sa Pagpapayo sa Paggamit ng Wika (Language Accessibility Advisory Committee, LAAC) upang bumuo ng Plano sa Edukasyon at Pag-abot sa Botante, na isusumite sa opisina ng Kalhim ng Estado para sa pagsusuri at pag-aproba.

Katulad ng aming mga pagsisikap sa pag-abot sa komunidad at kamalayan ng publiko bago dumating ang Lahat ay Ipinakokoreong Balota na Halalan ng Ika-3 ng Nobyembre 2015, ang County ay makikipag-ugnayan sa mga organisasyong pangkomunidad, ahensiya, paaralan at ibang mga grupo upang itaas ang kamalayan sa bagong modelo ng halalan. Ito ay isasama sa isang malawak na kampanya ng media gamit ang tuwirang koreo, media ng balita, social media, at media ng paggamit ng publiko upang ipahayag ang pagpapatupad ng VCA. Ang kampanya ay magtataguyod ng walang-bayad na nakahandang linya ng tulong sa botante, magbibigay ng impormasyon sa mga botante kung paano kunin ang kanilang balota sa isang madaling magamit na anyo, at magkakaloob ng mga serbisyo sa iba't ibang wika at magagamit ng mga taong may kapansanan sa pagdinig.

Ang mga darating na ginaganap na pangkomunidad at mga kasama ng komunidad ay matatagpuan sa Dagdag.

## **MGA BOTANTENG DI-INGLES ANG PINILI**

Bilang bahagi ng mga pagsisikap sa pag-abot, ang County ay magpapatuloy at palalawakin ang pag-abot nito sa mga botante na mas gustong gumamit ng isang wikang iba sa Ingles.

Ang isang pagpapalabas ng balita, ipinamamahagi sa lahat ng media na naglilingkod sa mga residente ng County ng San Mateo, ay magpapahayag ng walang-bayad na nakahandang linya ng tulong sa botante, na magkakaloob ng mga serbisyo sa iba't-ibang wika. Bilang karagdagan, ang mga anunsiyo sa Kastila, Tsino, Filipino, at Koreano na media ay bibilhin upang itaguyod ang nakahandang linya ng tulong.

Ang mga Sentro ng Pagboto na nag-aatas ng tulong sa wika ay tutukuyin sa pamamagitan ng mga datos ng Sensus ng U.S. at sa pamamagitan ng proseso ng ambag ng publiko, kabilang ang ambag na ipinagkakaloob ng LAAC ng County.

Ang mga kasamang media, kabilang ang di-Ingles na media, ay nasa Dagdag.

## **MGA BOTANTENG MAY KAPANSANAN**

Ang County ay may matagal nang pagtatalaga ng sarili sa pakikipagtulungan sa mga botanteng may kapansanan upang itaas ang paggamit ng demokratikong proseso. Ang website ng Pagpaparehistro at mga Halalan, [www.shapethefuture.org](http://www.shapethefuture.org), ay nagkaloob ng impormasyon at tagatulong para sa mga botanteng may kapansanan, kabilang ang mga detalye sa Mga Yunit ng Paggamit ng May Kapansanan ng eSlate, sa Madaling Magamit na Sistema ng Pagboto sa Pamamagitan ng Koreo, sa mga iniaatas na Magagamit na Kaugnay ng ADA para sa mga Sentro ng Pagboto at sa VAAC.

Ang isang pagpapalabas ng balita, ipinamamahagi sa lahat ng media na naglilingkod sa mga residente ng County ng San Mateo, ay magpapahayag ng walang-bayad na nakahandang linya ng tulong sa botante, na magkaloob ng mga serbisyo sa mga taong may kapansanan sa pandinig.

Ang mga botanteng may kapansanan ay maaaring humiling sa County na maghatid ng isang balota sa kanilang bahay, o padalhan sa kanilang bahay ng isang makina sa elektronikong pagboto. Ang mga botanteng may kapansanan ay maaari ring gumamit ng kanilang personal na kompyuter upang i-download at markahan ang kanilang balota sa pamamagitan ng Madaling Magamit na Sistema ng Pagboto sa Pamamagitan ng Koreo. Ang mga tauhan ng Sentro ng Pagboto ay maaari ring magdala ng isang papel na pamalit sa balota o ng Yunit ng Paggamit ng May Kapansanan ng eSlate sa isang sasakyan para sa pagboto sa gilid ng bangketa.

## **PAGTUGON SA MGA PAGKAKAIBA SA PAGLAHOK**

Ang County ay magkaloob ng impormasyon at pagsasanay kapag hiniling sa mga tagapag-ugnay at tauhan sa mga ahensiyang naglilingkod sa mga botanteng maliit ang kita at mga indibidwal na may kapansanan mula sa mga ahensiya kabilang ang, pero hindi limitado sa: CalFresh CalWORKs, Medi-Cal, Women, Infants, and Children (WIC), In-Home Supportive Services, Covered California, palitan sa benepisyong pangkalusugan ng California, Kagawaran ng Rehabilitasyon-Mga Bokasyonal na Serbisyo, Independiyenteng mga Sentro ng Paninirahan, Mga Panrehiyong Sentro ng Kagawaran ng mga Serbisyong Pagpapaunlad, mga Opisang nakikipagkontrata sa Opisina ng Paggamit ng Bingi, mga kagawaran ng kalusugan ng isip at asal ng Estado at County, at mga pribadong manggagamot na nagkaloob ng mga serbisyo sa ilalim ng kontrata sa mga kagawarang ito.

Ang isang naililipat na Sentro ng Pagboto ay maaaring ilagay upang tugunan ang malalayong lugar kung saan ang isang pirmihang lugar ay hindi magagawa.

## **MGA TUWIRANG KONTAK SA BOTANTE**

Ang tuwirang kontak mula sa County patungo sa mga botante ay ang pinakamabisang paraan upang ipagbigay-alam sa mga botante ang tungkol sa Lahat ay Ipinakokoreong Balota na Halalan ng Ika-3 ng Nobyembre, 2015.

Tatlong postcard ang nakaplano upang ipagbigay-alam sa mga botante ang bagong modelo ng halalan, bilang karagdagan sa impormasyon sa Halimbawang Balota at Opisyal na Pamplet ng Impormasyon para sa Botante at Balota ng Pagboto sa Pamamagitan ng Koreo. Ang unang pagpapakoreo ay magbibigay ng impormasyon sa lahat ng nakarehistrong botante tungkol sa bagong modelo ng halalan. Ang ikalawang pagpapakoreo ay para sa mga

botanteng hindi pa nakatanggap ng kanilang balota sa pamamagitan ng koreo upang alertuhan sila sa darating na pagpapakoreo ng balota at magkaloob ng impormasyon tungkol sa Sentro ng Pagboto. Ang ikatlong pagpapakoreo, sa mga panghuling araw bago ang halalan, ay para sa mga botanteng hindi pa nakapagpakoreo ng kanilang balota upang ipagunita sa kanila na gawin ito, magkaloob ng impormasyon tungkol sa pagkuha ng pamalit na balota at mga lokasyon ng Sentro ng Pagboto.

### **MGA PAHAYAG NG SERBISYO SA PUBLIKO**

Ang isang iskrip para sa TV ng Pahayag ng Serbisyo sa Publiko (Public Service Announcement, PSA) ay ipamamahagi na may paghiling ng mga biswal o nakalimbag na mga salita para sa mga botanteng bingi o nahihirapang makarinig. Ang isang iskrip sa radyo ay magsasama ng paghiling sa mga istasyon upang ilagay ang impormasyon sa kanilang mga kasamang website upang tumulong sa pag-abot sa mga botante.

Ang likhang sining ay makukuha mula sa County para sa paglilimbag at online na mga PSA, at para sa pamahalaan at mga kasama sa komunidad upang gamitin sa kanilang social media at newsletter. Ang mga Print PSA ay sasamahan ng isang paghiling na maglagay ng pahayag sa alinmang kasaping website na may audio para sa bulag at may kapansanan sa pandinig.

Ang County ay magkaloob sa mga outlet ng media sa wikang Kastila, Tsino, Tagalog, at Koreano na naglilingkod sa County ng San Mateo na may mga iskrip para sa mga PSA. Ang mga iskrip ay magbibigay ng impormasyon sa mga botante tungkol sa darating na halalan at magtataguyod ng walang-bayad na nakahandang linya ng tulong sa botante. Ang likhang sining ay makukuha rin.

### **BADYET**

Ang Pambuong-estadong Tuwirang Primaryang Halalan ng Ika-5 ng Hunyo, 2018 ay pinaglaanan ng \$241,000 para sa edukasyon at pag-abot sa botante. Bilang karagdagan, ang Dibisyon ng Pagpaparehistro at mga Halalan ay magkaloob ng panloob na suporta para sa paghahanda ng mga materyal na grapiko at para sa pag-abot, mga pampublikong presentasyon at mga ginaganap na pag-abot sa komunidad.

Ang badyet ay magpapahintulot ng pagbili ng mga anunsiyo sa mga pahayagan, telebisyon, radyo at social media. Ang isang bahagi ng mga pondong ito ay ilalaan sa pagsasalin ng wika at paggawa ng braille. Ang badyet sa pag-abot ay hindi kasama ang mga gastos sa paglimbag at selyo para sa mga tuwirang pagpapakoreo sa mga nakarehistrong botante. Ang mga karagdagang pundo sa halagang \$200,000 ay kakailanganing idagdag sa badyet ng Pambuong-estadong Tuwirang Primaryang Halalan ng Ika-5 ng Hunyo, 2018 para sa layuning ito.

Bilang karagdagan, ang koalisyon sa Pagpili ng Botante ng California ay nag-alay ng mga gawad sa mga organisasyong nakabase sa komunidad upang kunin ang kanilang suporta sa mga programang pag-abot kaugnay ng VCA. Ang impormasyon tungkol sa koalisyon ng Pagpili ng Botante ng California at sa kanilang mga gawad na programa ay maaaring makuha sa <https://voterschoice.org/>.

# CALIFORNIA VOTER'S CHOICE ACT ADDENDA



**Office of Mark Church  
Chief Elections Officer & Assessor-County Clerk-Recorder**

**CALIFORNIA VOTER'S CHOICE ACT  
PROPOSED VOTE CENTERS  
&  
BALLOT DROP-OFF BOX LOCATIONS**



**Office of Mark Church  
Chief Elections Officer & Assessor-County Clerk-Recorder**



## Location of Proposed Vote Centers

### Open 29 Days before Election through Election Day

Redwood City	Assessor-County Clerk-Recorder
South San Francisco	South San Francisco Main Library
San Mateo	Registration & Elections Division

### Open 10 Days before Election through Election Day

East Palo Alto	City Hall, Community Room
Half Moon Bay	Ted Adcock Community Center
Daly City	Daly City City Hall
San Bruno	San Bruno City Hall, Conference Room 115
San Mateo	Mid-Peninsula Boys & Girls Club

### Open 3 Days before Election through Election Day

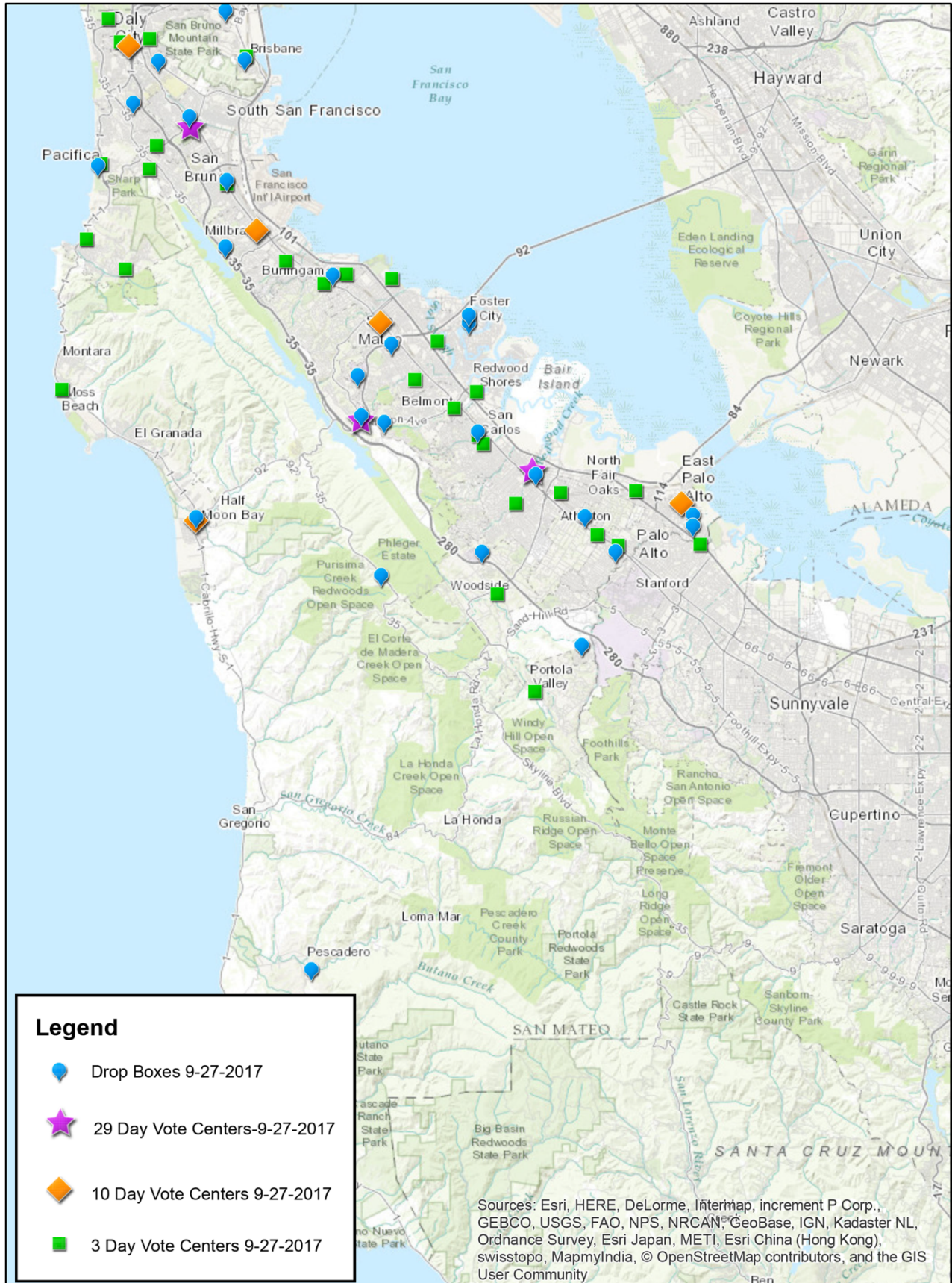
Atherton	Atherton Town Council Chambers
Belmont	Belmont City Hall, Emergency Operations Center
Brisbane	Brisbane City Hall, Community Meeting Room
Burlingame	Burlingame City Hall, Conference Room A
Burlingame	Saint Paul's Episcopal Church
Colma	Emergency Operations Center
Daly City	Hillside Clubhouse
Daly City	Marchbank Park
Daly City	Holy Child and St. Martin Episcopal Church
East Palo Alto	Joan and Lewis Platt EPA Family YMCA
Foster City	Foster City Recreation Center
Hillsborough	Fire Station 32
Menlo Park	Arrillaga Recreation Center, Oak Room
Menlo Park	Onetta Harris Community Center
Millbrae	Modular Community Center
Moss Beach	The Church of Jesus Christ of Latter-day Saints
Pacifica	Pacifica School District - Board Room
Pacifica	St. Peter Catholic Church
Pacifica	TBD
Portola Valley	Historic School
Redwood City	Woodside Fire Training Room
Redwood C./N. Fair Oaks	TBD
Redwood Shores	San Mateo County Office of Education
South San Francisco	Grand Library
South San Francisco	TBD
San Bruno	TBD
San Carlos	San Carlos Library, Conference Room
San Carlos	TBD
San Mateo	Tentatively - King Community Center
San Mateo	San Mateo City Hall - Conference Room C
Woodside	Woodside Village Church

## Ballot Drop-off Box Locations Open 28 Days before Election

<b>Atherton</b>	City Hall 91 Ashfield Road Atherton, CA 94027	<b>Millbrae</b>	City Hall 621 Magnolia Avenue Millbrae, CA 94030
<b>Belmont</b>	City Hall One Twin Pines Lane, Suite 375 Belmont, CA 94002	<b>Pacifica</b>	City Hall 170 Santa Maria Avenue Pacifica, CA 94044
<b>Brisbane</b>	City Hall 50 Park Place Brisbane, CA 94005	<b>Portola Valley</b>	Town Hall 765 Portola Road Portola Valley, CA 94028
<b>Burlingame</b>	City Hall 501 Primrose Road Burlingame, CA 94010	<b>Redwood City</b>	City Hall 1017 Middlefield Road Redwood City, CA 94063
<b>Colma</b>	Town Hall 1198 El Camino Real Colma, CA 94014	<b>Redwood City</b>	Assessor-County Clerk-Recorder 555 County Center, 1 <sup>st</sup> Floor Redwood City, CA 94063
<b>Daly City</b>	City Hall 333 90th Street Daly City, CA 94015	<b>San Bruno</b>	City Hall 567 El Camino Real San Bruno, CA 94066
<b>East Palo Alto</b>	City Hall 2415 University Avenue East Palo Alto, CA 94303	<b>San Carlos</b>	City Hall 600 Elm Street San Carlos, CA 94070
<b>Foster City</b>	City Hall 610 Foster City Boulevard Foster City, CA 94404	<b>San Mateo</b>	City Hall 330 West 20th Avenue San Mateo, CA 94403
<b>Half Moon Bay</b>	City Hall 501 Main Street Half Moon Bay, CA 94019	<b>San Mateo</b>	Registration & Elections Division 40 Tower Road San Mateo, CA 94402
<b>Menlo Park</b>	City Hall 701 Laurel Street Menlo Park, CA 94025	<b>South San Francisco</b>	City Hall 400 Grand Avenue South San Francisco, CA 94080
<b>Hillsborough</b>	Town Hall 1600 Floribunda Avenue Hillsborough, CA 94010	<b>South San Francisco</b>	Main Library 840 West Orange Avenue South San Francisco, CA 94080
<b>Woodside</b>	Town Hall 2955 Woodside Road Woodside, CA 94062		

Three more locations to be determined

# Proposed Vote Center & Ballot Drop-off Locations Map



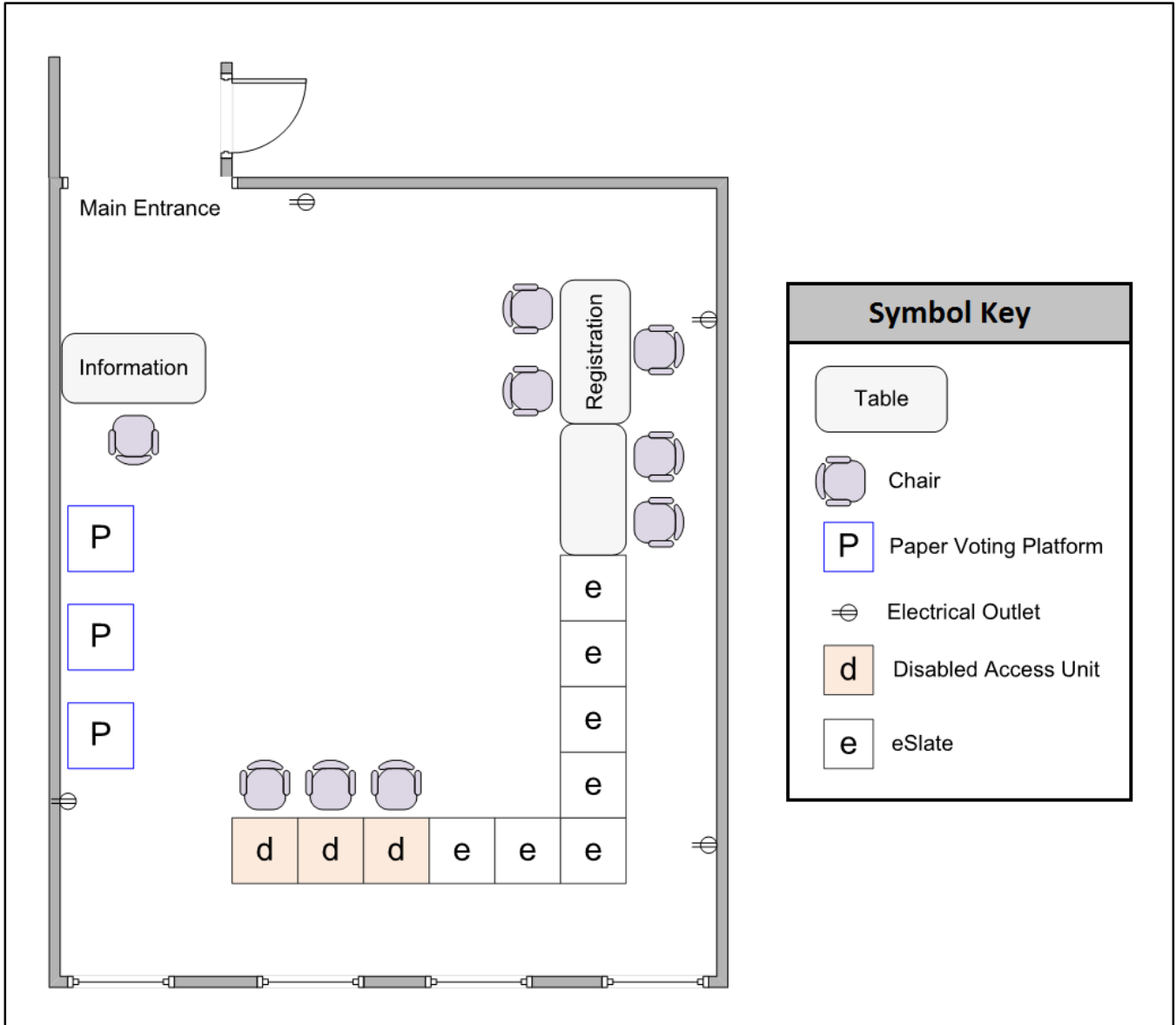
# CALIFORNIA VOTER'S CHOICE ACT VOTE CENTER LAYOUT (PROPOSED)



**Office of Mark Church  
Chief Elections Officer & Assessor-County Clerk-Recorder**

# Vote Center Layout (Proposed)

## San Bruno City Hall – Conference Room 115



# CALIFORNIA VOTER'S CHOICE ACT

## VOTING ACCESSIBILITY ADVISORY COMMITTEE & LANGUAGE ACCESSIBILITY ADVISORY COMMITTEE



Office of Mark Church  
Chief Elections Officer & Assessor-County Clerk-Recorder



OFFICE OF  
**ASSESSOR-COUNTY CLERK-  
RECORDER & ELECTIONS**  
COUNTY OF SAN MATEO

**MARK CHURCH**  
ASSESSOR-COUNTY CLERK-  
RECORDER & CHIEF ELECTIONS OFFICER

## **San Mateo County Voting Accessibility Advisory Committee**

San Mateo County Registration & Elections Division established a Voting Accessibility Advisory Committee (VAAC) to advise, assist, and provide recommendations to the Chief Elections Officer regarding the implementation of federal and state laws relating to access to the electoral process by older adults and persons with disabilities. It is the mission of the VAAC to ensure that all persons can vote independently and privately.

### **Member Roster 2017 - 2018**

Craig McCulloh, Chairperson  
San Mateo County Health Systems Aging and Adult Services

Bill Hershon  
Disability Rights California

Michael Levinson  
Paratransit Coordinating Council

Benjamin McMullan  
Center for Independence

Fred Nisen  
Disability Rights California

Wilhelmina Riley  
Paratransit Coordinating Council

40 Tower Road, San Mateo, CA 94402  
P 650.312.5222 F 650.312.5348 **email** registrar@smcare.org **web** www.shapethefuture.org



OFFICE OF  
**ASSESSOR-COUNTY CLERK-  
RECORDER & ELECTIONS**  
COUNTY OF SAN MATEO

**MARK CHURCH**  
ASSESSOR-COUNTY CLERK-  
RECORDER & CHIEF ELECTIONS OFFICER

## **San Mateo County Language Accessibility Advisory Committee**

The San Mateo County Chief Elections Officer established the Language Accessibility Advisory Committee (LAAC) to advise and assist the Chief Elections Officer on matters relating to language accessibility to the electoral process by voters with limited English proficiency. It is the mission of the LAAC to assist the Chief Elections Officer to enhance language accessibility opportunities and compliance with all federal, state and local laws.

### **Member Roster 2017 - 2018**

Rosa Uriarte, Chairperson  
International Institute of the Bay Area

Wesley Taoka, Vice Chairperson  
San Mateo Japanese-American Community Center

June Chen  
Asian Pacific Islander American Public Affairs Association (APAPA), Peninsula Chapter

Kelly Chew  
Self-Help for the Elderly

Julio Garcia  
Community Advocate

Mukta Vadera  
Community Advocate

40 Tower Road, San Mateo, CA 94402  
P 650.312.5222 F 650.312.5348 **email** registrar@smcare.org **web** www.shapethefuture.org



# CALIFORNIA VOTER'S CHOICE ACT CITY ELECTION OFFICIALS



**Office of Mark Church  
Chief Elections Officer & Assessor-County Clerk-Recorder**

## City Election Officials

### **Atherton**

Ms. Theresa DellaSanta  
91 Ashfield Road  
Atherton, CA 94027  
650.752.0529  
tdellasanta@ci.atherton.ca.us

### **Brisbane**

Ms. Ingrid Padilla  
50 Park Place  
Brisbane, CA 94005  
415.508.2113  
cityclerk@ci.brisbane.ca.us

### **Colma**

Ms. Caitlin Corley  
1198 El Camino Real  
Colma, CA 94014  
650.997.8311  
caitlin.corley@colma.ca.gov

### **East Palo Alto**

Ms. Maria Buell, Deputy  
2415 University Avenue  
East Palo Alto, CA 94303  
650.853.3127  
mbuell@cityofepa.org

### **Half Moon Bay**

Ms. Jessica Blair  
501 Main Street  
Half Moon Bay, CA 94019  
650.726.8271  
jblair@hmbcity.com

### **Menlo Park**

Mr. Clay J. Curtin, Interim  
701 Laurel Street  
Menlo Park, CA 94025  
650.330.6615  
cjcurtin@menlopark.org

### **Belmont**

Hon. Terri Cook  
One Twin Pines Lane, Suite 375  
Belmont, CA 94002  
650.595.7413  
tcook@belmont.gov

### **Burlingame**

Ms. Meaghan Hassel-Shearer  
501 Primrose Road  
Burlingame, CA 94010  
650.558.7203  
mhasselshearer@burlingame.org

### **Daly City**

Hon. Annette Hipona  
333 90th Street  
Daly City, CA 94015  
650.991.8078  
ahipona@dalcycity.org

### **Foster City**

Ms. Doris Palmer  
610 Foster City Boulevard  
Foster City, CA 94404  
650.286.3250  
dpalmer@fostercity.org

### **Hillsborough**

Ms. Miyuki Yokoyama  
1600 Floribunda Avenue  
Hillsborough, CA 94010  
650.375.7412  
myokoyama@hillsborough.net

### **Millbrae**

Ms. Angela Louis  
621 Magnolia Avenue  
Millbrae, CA 94030  
650.259.2333  
alouis@ci.millbrae.ca.us

**Pacifica**

Ms. Kathy O'Connell  
170 Santa Maria Avenue  
Pacifica, CA 94044  
650.738.7307  
o'connellk@ci.pacifica.ca.us

**Redwood City**

Ms. Pam Aguilar  
1017 Middlefield Road  
Redwood City, CA 94063  
650.780.7220  
paguilar@redwoodcity.org

**San Carlos**

Ms. Crystal Mui  
600 Elm Street  
San Carlos, CA 94070  
650.8024219  
cmui@cityofsancarlos.org

**South San Francisco**

Hon. Krista Martinelli  
400 Grand Avenue  
P.O. Box 711  
South San Francisco, CA 94083  
650.877.8518  
krista.martinelli@ssf.net

**Portola Valley**

Ms. Sharon Hanlon  
765 Portola Road  
Portola Valley, CA 94028  
650.851.1700  
shanlon@portolavalley.net

**San Bruno**

Hon. Carol Bonner  
567 El Camino Real  
San Bruno, CA 94066  
650.616.7058  
cbonner@sanbruno.ca.gov

**San Mateo**

Ms. Patrice Olds  
330 West 20th Avenue  
San Mateo, CA 94403  
650.522.7042  
polds@cityofsanmateo.org

**Woodside**

Ms. Dora Wong  
2955 Woodside Road  
P.O. Box 620005  
Woodside, CA 94062  
650.851.6790  
dwong@woodsidetown.org

# CALIFORNIA VOTER'S CHOICE ACT COMMUNITY PARTNERS



**Office of Mark Church  
Chief Elections Officer & Assessor-County Clerk-Recorder**

## Community Partners Supervisory District 1

Agency	Address	City
Boys & Girls Clubs North San Mateo County	201 Park Rd	South San Francisco
Burlingame Long Term Care	1100 Trousdale Drive	Burlingame
CALL Primrose	139 Ford St	Burlingame
Chadbourne Adult Activity Center	450 Chadbourne Avenue	Millbrae
City of San Mateo Senior Center	2645 Alameda de las Pulgas	San Mateo
Community Learning Center	520 Tamarack Lane	South San Francisco
El Concilio of San Mateo County	1419 Burlingame Ave	Burlingame
Friends of the Millbrae Public Library	1 Father Junipero Serra Trl	Millbrae
Global Solutions for Infectious Diseases	830 Bancroft Way, Ste 101	South San Francisco
Hillsborough Beautification Foundation	1600 E Truxtun Ave	Hillsborough
Hillsborough Schools Foundation	300 3Rd St., #919	Hillsborough
Magnolia Senior Center	601 Grand Avenue	South San Francisco
Millbrae Senior Center	477 Lincoln Circle	Millbrae
Millbrae Skilled Care	33 Mateo Avenue	Millbrae
Palcare	945 California Dr	Burlingame
PARCA	800 Airport Blvd, Ste 320	Burlingame
Peninsula Humane Society & SPCA	1450 Rollins Rd	Burlingame
Peninsula Post-Acute	1609 Trousdale Drive	Burlingame
Pied Piper Players	Po Box 1996	Burlingame
San Bruno Community Foundation	901 Sneath Lane, Suite 209	San Bruno
San Bruno Senior Center	1555 Crystal Springs Road	San Bruno
San Bruno Skilled Nursing Hospital	891 El Camino Real	San Bruno
South San Francisco Community Learning Center	520 Tamarack Lane	South San Francisco
Training for Safety, Inc.	801 Magnolia Ave	Burlingame

## Community Partners Supervisory District 2

Agency	Address	City
American Association of University Women (AAUW)	P.O. Box 1465	San Mateo
Bay Area Montessori Association	1876 E. Fitzgerald Road	San Mateo
Belmont Vista Convalescent	1041 Hill Street	Belmont
Belmont-Redwood Shores School District	2960 Hallmark Drive	Belmont
Brookside Skilled Nursing Hospital	2620 Flores Street	San Mateo
Carlmont Gardens Nursing Center	2140 Carlmont Drive	Belmont
Center for Independence	2001 Winward Way, Suite 103	San Mateo
College of San Mateo	1700 W Hillsdale Boulevard	San Mateo
College of San Mateo Disability Resource Center (DRC)	1700 W. Hillsdale Boulevard College Center Building 10 Room 110	San Mateo
CORA (Community Overcoming Relationship Abuse)	2211 Palm Avenue	San Mateo
Family Housing and Adult Resources	20 East 20th Ave	San Mateo
Foster City Parks and Recreation Department: Senior Wing	650 Shell Boulevard	Foster City
Friends of the Mandarin Scholars in the SMFCSD	715 Hearst Avenue, Ste 200	San Mateo
Homework Central	Po Box 6687	San Mateo
Human Investment Project, Inc. (HIP)	3639 Midway Dr # 376	San Mateo
Israel Peace Initiative	13505 Union Road	San Mateo
JACL: San Mateo Japanese American Community Center	415 S Claremont Street	San Mateo
LWV North and Central San Mateo County	444 Peninsula Avenue	San Mateo
Mid-Peninsula Boys & Girls Club, Inc.	200 Mcallister Street	San Mateo
Mills-Peninsula Extended Care	100 S San Mateo Drive	San Mateo
NAACP San Mateo Branch #1068	P.O. Box 5280	San Mateo

NAMI San Mateo County	165 Preda St Apt 39	San Mateo
National Association for the Advancement of Colored People	825 Monte Diablo Avenue	San Mateo
Nazareth Vista	900 6th Avenue	Belmont
Newcomers' Club of San Mateo County	167 Flying Mist Isle	Foster City
Orgainzation of Chinese Americans	P.O. Box 218	San Mateo
Peninsula Conflict Resolution Center	1660 South Amphlett Blvd	San Mateo
Peninsula Family Service	24 2nd Ave	San Mateo
Peninsula Jewish Community Center	800 Foster City Boulevard	Foster City
People Power Belmont	michelle@michellemyhre.com	Belmont
Samaritan House	4031 Pacific Blvd	San Mateo
San Francisco Achievers	7471 Monterey Street	San Bruno
San Francisco Bay Area Autism	Po Box 249	San Mateo
San Mateo Adult School	789 East Poplar Avenue	San Mateo
San Mateo Buddhist Temple	2 S Claremont Street	San Mateo
San Mateo County Health Foundation	222 Ridgewood Dr	San Mateo
San Mateo County Health System Aging and Adult Services	225 37th Avenue	San Mateo
San Mateo County Union Community Alliance	1151 Sutter St., #1	Foster City
San Mateo Garden Center	605 15Th St Ste B	San Mateo
San Mateo High School Foundation	2037 W Bullard Ave., Pmb 306	San Mateo
San Mateo Medical Center	222 W 39th Avenue	San Mateo
Self-Help for the Elderly	50 E 5th Avenue	San Mateo
Shopping for a Change	801 K St, Ste 1236	San Mateo
Silicon Valley Community Foundation	1300 South El Camino Real Suite 100	San Mateo
Twin Pines Senior Center	20 Twin Pines Lane	Belmont
Zawaya	3105 Sierra Oaks Dr	San Mateo

## Community Partners Supervisory District 3

Agency	Address	City
AbleCloset	100 Ericson Ct, Ste 100A	San Carlos
Cabrillo Education Foundation	Po Box 354	Half Moon Bay
Coastside Adult Day Health Center	6445 Camden Ave.	Half Moon Bay
Coastside Child Development Center*	Po Box 84	Half Moon Bay
Coastside Hope & Moonridge Learning Center	P.O. Box 1089	El Granada
Concentric Media, Inc.	Po Box 1414	Menlo Park
Critical Reach	207 W 74Th St	Half Moon Bay
Djerassi Resident Artists Program	2325 3Rd Street, Ste #323	Woodside
Fair Oaks Beautification Association	Po Box 4001	Menlo Park
Healthy Cities Tutoring	Po Box 653	San Carlos
Holbrook-Palmer Recreation Park Foundation*	150 Spear St, Ste 500	Atherton
Institute for the Advancement of Human Behavior	430 E Tulare Ave.	Portola Valley
La Costa Adult School	498 Kelly Avenue	Half Moon Bay
Land Dancers	2240 S Union Ave	La Honda
League of Women Voters- South SMC	713 Santa Cruz Aveune Suite 9	Menlo Park
Linda Mar Care Center	751 San Pedro Terrace Road	Pacifica
Music for Minors, Inc.	1100 Geneva Avenue	San Carlos
National Center for Equine Facilitated Therapy, Inc.*	880 Elyria Drive	Woodside
Pacifica Library Foundation	1038 Howard St	Pacifica
Pacifica Nursing and Rehab Center	385 Esplanade Street	Pacifica
Pacifica Resource Center	1809 Palmetto Ave	Pacifica
Pacifica School Volunteers	375 Reina Del Mar	Pacifica
Pacifica Senior Services	540 Crespi Drive	Pacifica
Pacificans Care	1141 Catalina Dr., #137	Pacifica



Pacifica's Environmental Family	Po Box 259	Pacifica
Peninsula Outreach Program	299 W Foothill Blvd., #202	Woodside
Peninsula Volunteers, Inc.	800 Middle Avenue	Menlo Park
Pie Ranch	Po Box 363	Pescadero
Puente de la Costa Sur	Po Box 554	Pescadero
Puente/La Honda Office	8865 La Honda Road Suite 4	La Honda
Puente/Pescadero Office	620 North Street	Pescadero
San Carlos Adult Community Center	601 Chestnut Street	San Carlos
San Carlos Educational Foundation	Po Box 1214	San Carlos
San Carlos Together	Po Box 74	San Carlos
Sanchez Art Center	1220-B Linda Mar Blvd	Pacifica
Second Harvest Food Bank	1051 Bing Street	San Carlos
Senior Coastsiders: Senior Center	925 Main Street	Half Moon Bay
Seton Coastside Long Term Care	600 Marine Boulevard	Moss Beach
South Coast Childrens' Services	Po Box 525	Pescadero
StarVista	610 E California Ave.	San Carlos
Terma Foundation	7985 Santa Monica Blvd, # 123	Half Moon Bay
The Sequoias	501 Portola Road	Portola Valley
Vida Verde Nature Education	354 South Harvard Blvd. Taras Hall	San Gregorio
Villages of San Mateo County	P.O. Box 813	San Carlos

## Community Partners Supervisory District 4

Agency	Address	City
ABS-CBN Foundation	150 Mcgivern Way	Redwood City
Art in Action	3921 Loch Lomond Dr	Menlo Park
Atherton Regency	1275 Crane Street	Menlo Park
Canada College Disability Resource Center	4200 Farm Hill Blvd Bldg 5 Rm 133	Redwood City
Center for Excellence in Nonprofits	330 Twin Dolphin Dr, Ste 151	Redwood City
Child and Family Institute	330 Ravenswood Ave	Menlo Park
Child Care Coordinating Council	330 Twin Dolphin Drive Suite 119	Redwood City
Commission on the Status Women	455 County Center 5th Floor	Redwood City
Devonshire Oaks Nursing Center	3635 Jefferson Avenue	Redwood City
Diving for a Cause	3034 MCGarvey Ave	Redwood City
East Palo Alto Community Alliance and Neighborhood	2362 Bancroft Way	East Palo Alto
East Palo Alto Senior Center	560 Bell Street	East Palo Alto
Fair Oaks Community Center	2600 Middlefield Road	Redwood City
Geohazards International	687 Bay Rd	Menlo Park
Green Salt	1734 W Shaw Ave	East Palo Alto
Herban Health	1765 E Bayshore Rd Unit 205	East Palo Alto
International Institute of the Bay	2600 Middlefield Road	Redwood City
JobTrain	1200 Obrien Dr	Menlo Park
Kainos Home and Training Center	363 Indianola Rd	Redwood City
Latino Leadership Council	2919 Menalto Avenue	Menlo Park
Legal Aid Society of San Mateo County	330 Twin Dolphin Dr Ste 123	Redwood City
LWV South San Mateo County	PO Box 2244	Menlo Park
Menlo Park Library Foundation	800 Airport Blvd, Ste 320	Menlo Park
Menlo Park Senior Center	100 Terminal Avenue	Menlo Park
Mental Health Association of San Mateo County	2686 Spring St	Redwood City

My New Red Shoes	330 A St, #51	Redwood City
Nuestra Casa	1798 Bay Road	East Palo Alto
One East Palo Alto Neighborhood Improvement Initiative	17937 Valladares Dr	East Palo Alto
One New Heartbeat	10100 Trinity Pkwy, Ste 310	Redwood City
Peninsula Family Service	2600 Middlefield Road	Redwood City
Redwood City Veterens Memorial Senior Center	1455 Madison Avenue	Redwood City
San Mateo County Service League	725 Cedar Street, #11	Redwood City
Sequoia Adult School	3247 Middlefield Road	Menlo Park
Sequoia High School Alumni Association	Po Box 2534	Redwood City
Service League of San Mateo County	727 Middlefield Rd	Redwood City
SparkPoint at Canada College	4200 Farm Hill Blvd Bldg 9 Rm 132	Redwood City
SV Links	116 No. I Street	Menlo Park
The Golden Gate Blues Society	Po Box 2591	Redwood City
Volunteers for Outdoor California	2744 Sand Hill Rd	Redwood City
Wings Learning Center	1201 Civic Center Blvd	Redwood City
Worldwide AIDS Coalition	8566 Fallbrook Circle Unit 704B	Redwood City

## Community Partners Supervisory District 5

<b>Agency</b>	<b>Address</b>	<b>City</b>
Jefferson Adult Division	699 Serramonte Boulevard	Daly City
South San Francisco Adult School	825 Southwood Drive	South San Francisco
Kindred at Home	355 Gellert Boulevard Suite 110	Daly City
Seton Medical Center: Skilled Nursing Facility	1900 Sullivan Avenue	Daly City
St. Francis Convalescent Pavilion	99 Escuela Drive	Daly City
St. Francis Heights Convalescent Hospital	35 Escuela Road	Daly City
Daly City Youth Health Center	2780 Junipero Serra Boulevard	Daly City
Daly City Partnership	725 Price Street	Daly City
Lincoln Park Community Center	901 Brunswick Street	Daly City
Skyline College EOPS & CARE	3300 College Drive Building 2 Second Floor	San Bruno
SparkPoint at Skyline College	3300 College Drive Building 1 Floor 2	San Bruno
Doelger Senior Center	101 Lake Merced Boulevard	Daly City
Brisbane Village Helping Hands	Po Box 734	Brisbane
Daly City Community Service Center	350 - 90th St	Daly City
Daly City Peninsula Partnership Collaborative	111 Errett Circle	Daly City
Daly City Public Library Associates	Po Box 3283	Daly City
Jericho Project	51 Daniels Ave	Brisbane
MAC's Children and Family Services	Po Box 297	Daly City
Migrante - San Mateo	No physical address	Daly City
North Peninsula Food Pantry & Dining Center	Po Box 280	Daly City
The Arc of San Francisco	6644 Mission Street Ste A	Daly City

## Community Partners Out of County

<b>Agency</b>	<b>Address</b>	<b>City</b>
APAPA Peninsula Chapter	4000 Truxel Road Suite 3	Sacramento
Asian Law Caucus	55 Columbus Avenue	San Francisco
Filipino American Democratic Caucus	1557 Larkwood Court	Milpitas
The Lighthouse for the Blind and Visually Impaired	1155 Market Street	San Francisco
The San Francisco Independent Living Resource Center	825 Howard Street	San Francisco
The Santa Clara Valley Blind Center	101 North Bascom Avenue	San Jose
The Vista Center for the Blind	3200 Hillview Avenue Suite 120	Palo Alto
Goodwill SF/SMC/Marin Corporate Offices	1500 Mission Street	San Francisco
Senior Center Without Walls	881 Turk Street	San Francisco
Midpeninsula Regional Open Space District	330 Distel Circle	Los Altos
Filipino Community Center	4681 Mission Street	San Francisco
ACLU Mid-Peninsula Chapter	39 Drumm Street	San Francisco
ACLU North Penininsula Chapter	39 Drumm Street	San Francisco
Recovery Survival Network	Po Box 281344	San Francisco
State Council on Developmental Disabilities	1515 Clay St., Suite 300	Oakland
Working Partnerships USA	2102 Almaden Rd Suite 112	San Jose
4 Elements Earth Education, Inc.	PO Box 459	Grass Valley
4Paws	555 Canon Park Dr	St. Helena
Disability Services and Legal Center	521 Mendocino Avenue	Santa Rosa
In-Home Supportive Services	1888 Senter Road	San Jose
California Council for the Blind	2143 Hurley Way Suite 250	Sacramento
California Council for the Blind	1550 Bancroft Avenue #113	San Leandro

# CALIFORNIA VOTER'S CHOICE ACT COMMUNITY EVENTS



**Office of Mark Church  
Chief Elections Officer & Assessor-County Clerk-Recorder**

## **Upcoming Community Events Winter/Spring 2018 Event Calendar**

Ongoing	U.S. Naturalization Ceremony
January 15, 2018	Martin Luther K Celebration, East Palo Alto
January 15, 2018	San Mateo County Martin Luther King, Jr. Day
January 29, 2018	Chinese New Year Celebration, Foster City
January 2018	Mayor's State of the City Address, Various Cities
February 2018	Comic Arts Fest, County Libraries
February 10, 2018	Millbrae Lunar New Year Festival
April 2 - 4, 2018	50th Anniversary Commemoration of King's Assassination, East Palo Alto
April 2018	High School Voter Education Weeks
April 2018	Earth Day events
April 30, 2018	Fair Oaks Library: Kermes Festival
April 2018	HSA Belmont Veterans Outreach
May 06, 2018	Foster City Polynesian Festival
May 2018	Streets Alive! Parks Alive! Various Cities
May 13, 2018	6th Annual Reading Bonanza, East Palo Alto
May 2018	May Mental Health Awareness Month events
May 2018	San Carlos Airport Day

## 2015 – 2016 Winter/Spring Event Calendar Sample

Monday, January 19, 2015	MLK Celebration in East Palo Alto
Sunday, January 25, 2015	AACI Walk Together in East Palo Alto
Saturday, February 06, 2016	Humana & Military Football Event in CSM
Saturday, February 13, 2016	Black History Month Celebration in Daly City
Sunday, February 14, 2016	Chinese New Year Celebration in Foster City
Saturday, February 21, 2015	Midpeninsula African American History Month Celebration in East Palo Alto
Wednesday, February 24, 2016	Sunrise Senior Living Center in Burlingame
Saturday, February 28, 2015	Millbrae Lunar New Year Festival
Saturday, March 19, 2016	Youth Conference at CSM
Tuesday, March 29, 2016	Burlingame Long Term Care
Wednesday, March 30, 2016	USCIS Naturalization Ceremony
Saturday, April 23, 2016	Sand Piper Community Center F.C.
Sunday, April 24, 2016	Fair Oaks Library: Kermes Festival
Friday, April 29, 2016	HSA Belmont Veterans Outreach
Sunday, May 01, 2016	East Palo Alto Apostolic Church
Saturday, May 02, 2015	Foster City Polynesian Festival
Saturday, May 02, 2015	Streets Alive! Parks Alive! in South City
Tuesday, May 03, 2016	Sequoia High School
Thursday, May 05, 2016	Oceania High School
Friday, May 06, 2016	Terra Nova High School
Friday, May 06, 2016	El Camino High School
Thursday, May 12, 2016	Canada College
Saturday, May 14, 2016	6th Annual Reading Bonanza
Sunday, May 15, 2016	St. Francis of Assisi Church
Tuesday, May 17, 2016	Skyline College
Thursday, May 19, 2016	East Palo Alto Academy
Saturday, May 21, 2016	OYE 2016 Latino Youth Conference
Thursday, May 26, 2016	San Mateo County Hospital



# CALIFORNIA VOTER'S CHOICE ACT MEDIA PARTNERS



**Office of Mark Church  
Chief Elections Officer & Assessor-County Clerk-Recorder**

## Media Partners

### Television

Univision  
NBC Owned Television Stations  
KTVU  
Telemundo  
CBS  
ABC  
KQED

### Radio

Univision (KBRG & KSOL)  
Telemundo  
KCBS-AM  
KQED-FM  
KGO-AM  
Cumulus Media (KNBR, KGO, KFOG, KSAN & KSJO)  
Chinese Radio Sound of Hope  
KHMB Coastside Radio 1710 AM  
Sing Tao Radio

### Newspapers/Magazines

San Mateo Daily Journal  
Daily Post  
East Palo Alto Today  
Embarcadero Publishing (The Almanac)  
Daily News Group newspapers  
SF Media Group (Examiner newspaper)  
Fox Venues (Climate magazine)  
Half Moon Bay Review  
Spectrum magazine  
Philippines Today  
News for Chinese  
El Reportero  
World News  
San Francisco Chronicle

### Movie Theaters

NCM (Century Theatres)

### Posters

Titan Outdoor - BART Stations

# CALIFORNIA VOTER'S CHOICE ACT MAPS

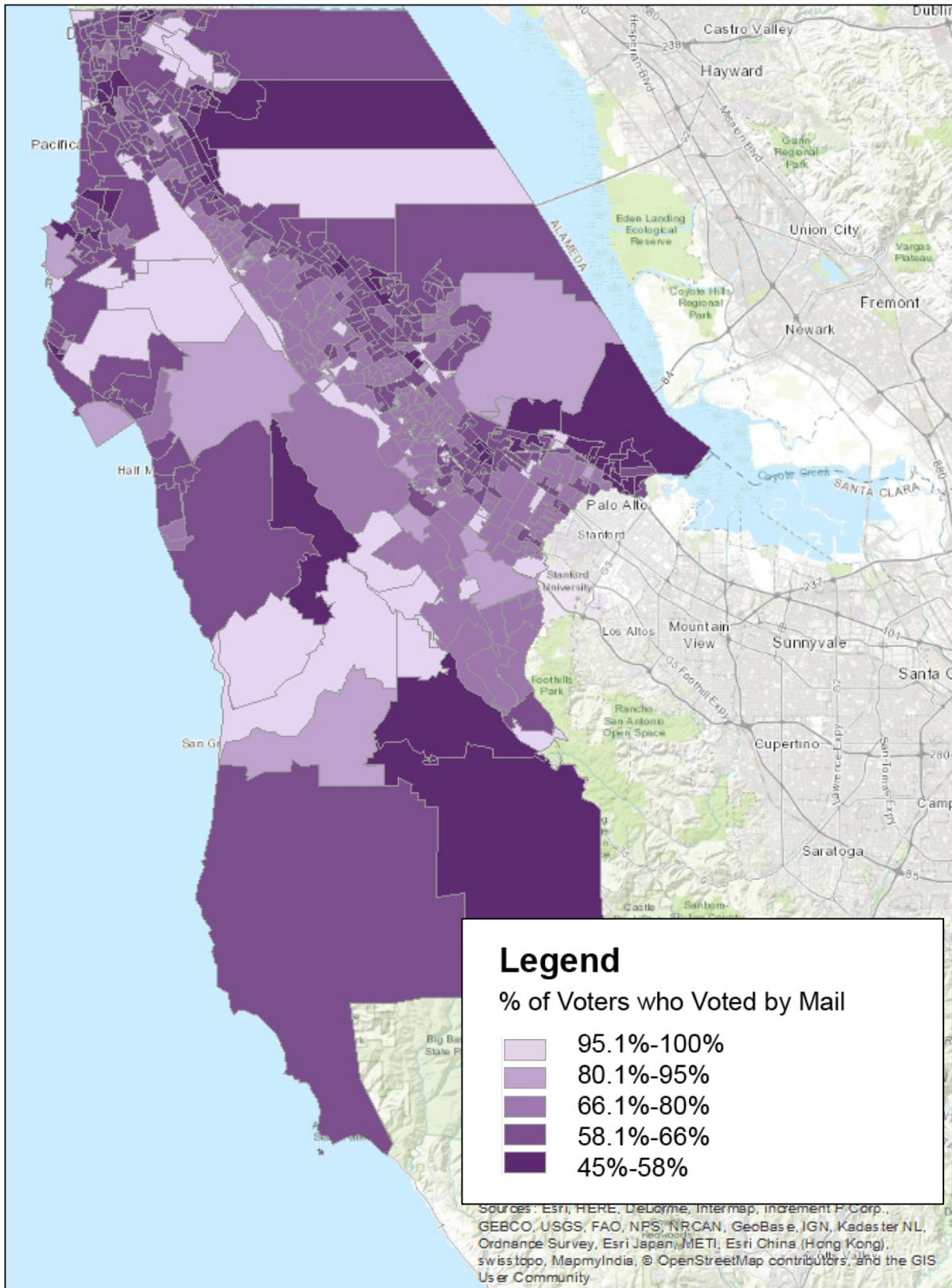


**Office of Mark Church**  
**Chief Elections Officer & Assessor-County Clerk-Recorder**



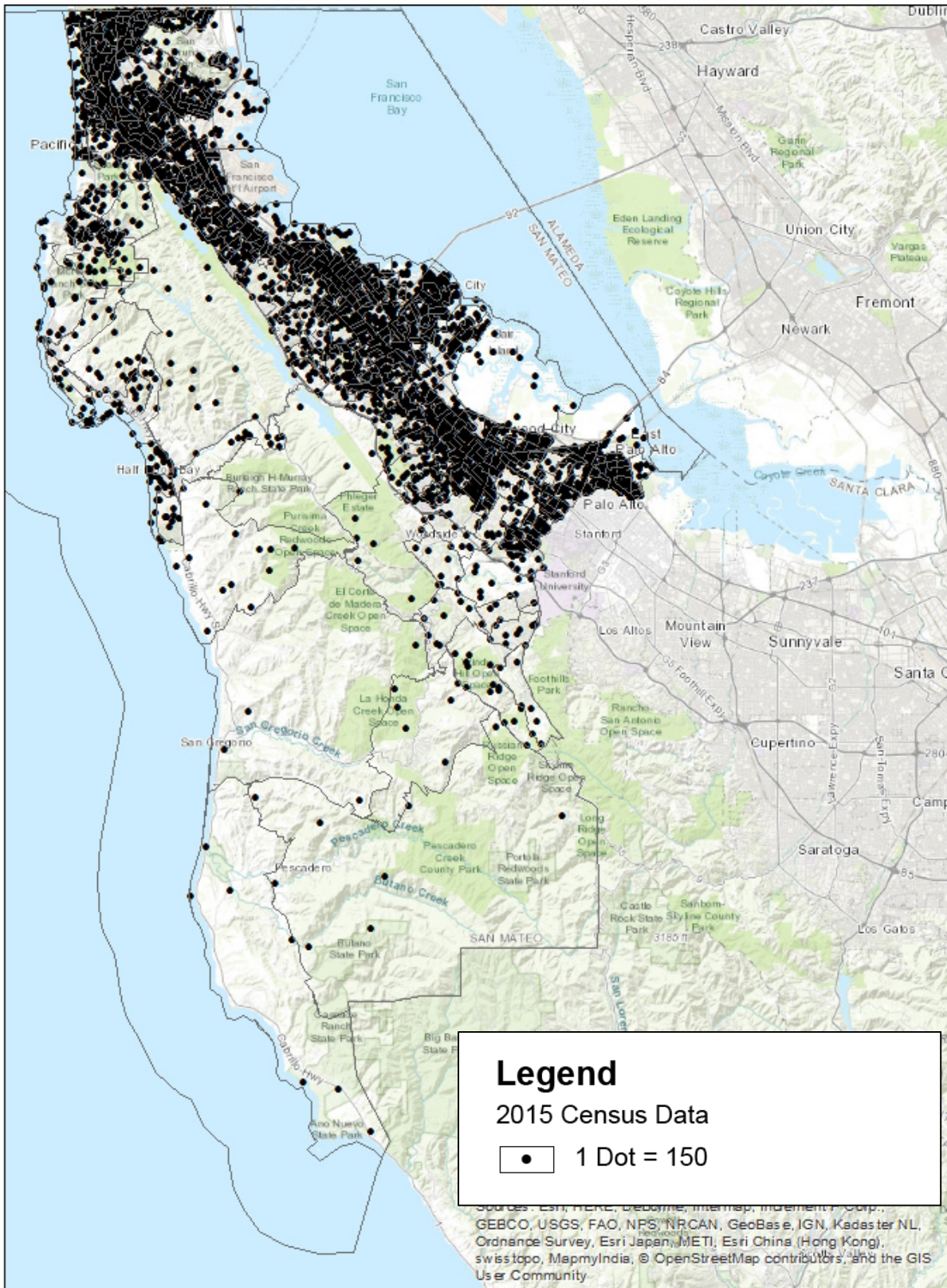
## Areas with Low Vote by Mail Usage

This map shows the percent of ballots cast by mail. The darker color indicates relatively lower vote by mail usage.



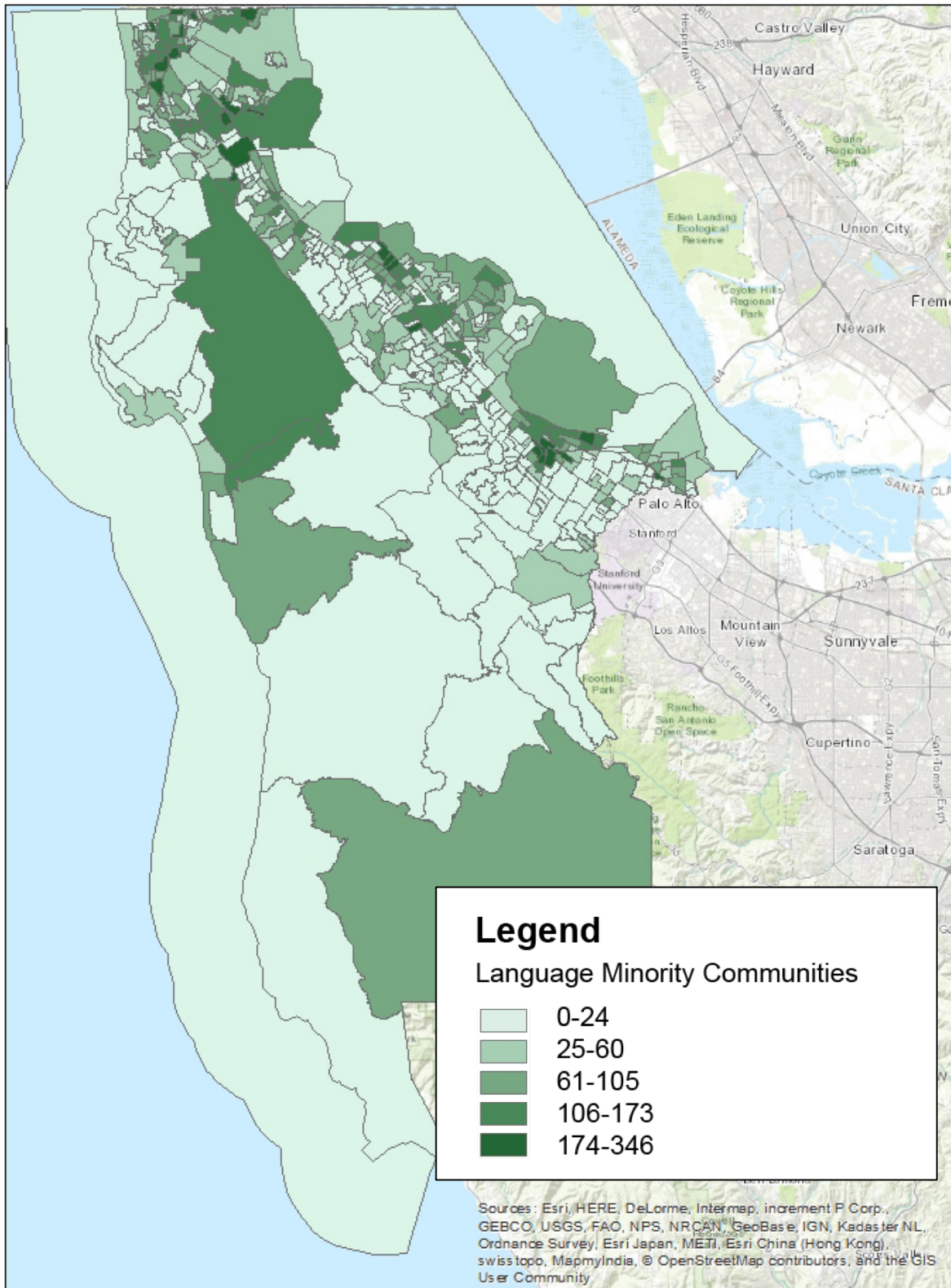
# San Mateo County Population

This map shows the population clusters around San Mateo County. The areas with the most black dots have the highest population density.



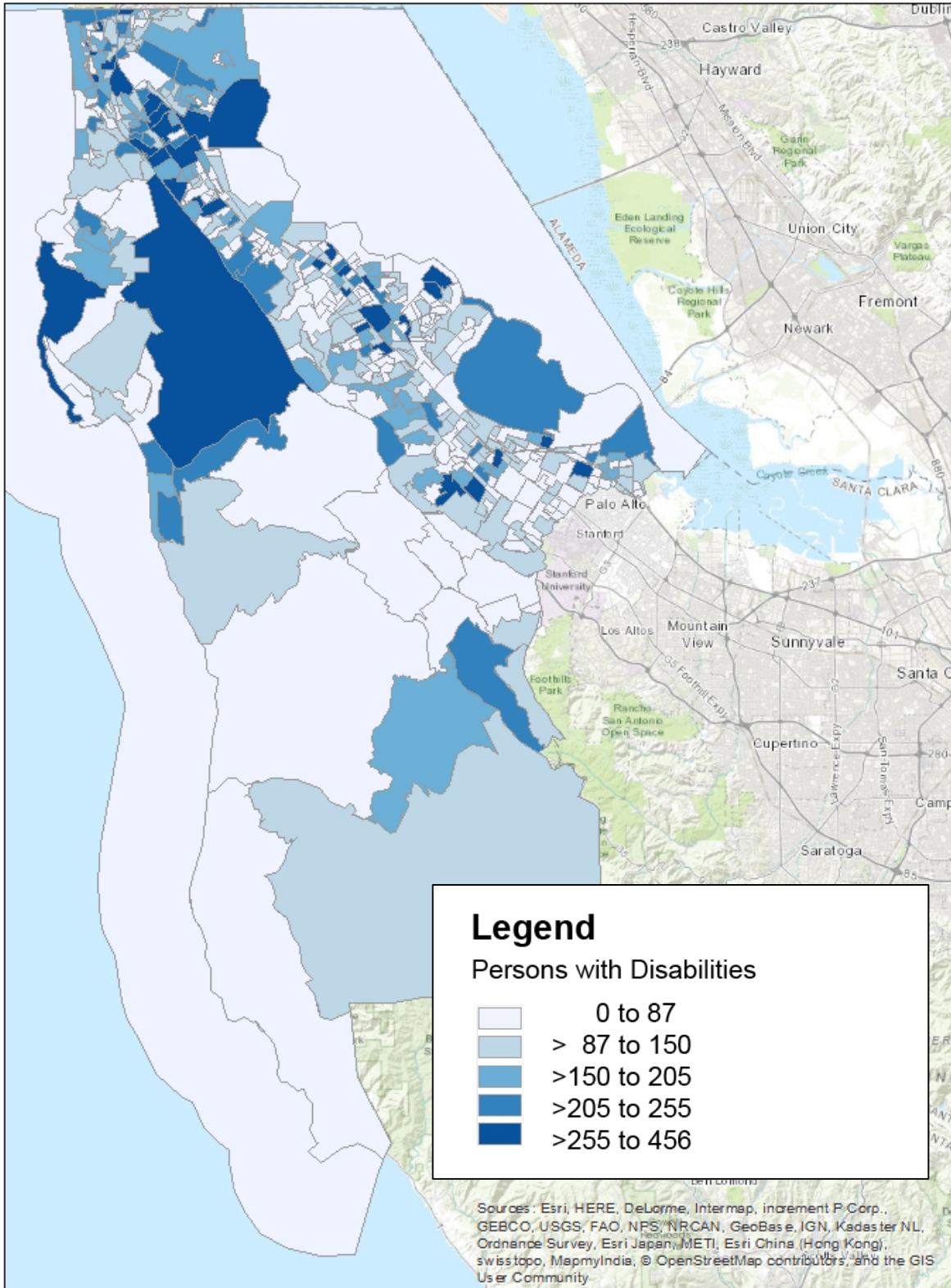
## Language Minority Communities

This map shows the population that speaks a language other than English who are not proficient in English. The darker the color, the higher the population.



## Voters with Disabilities

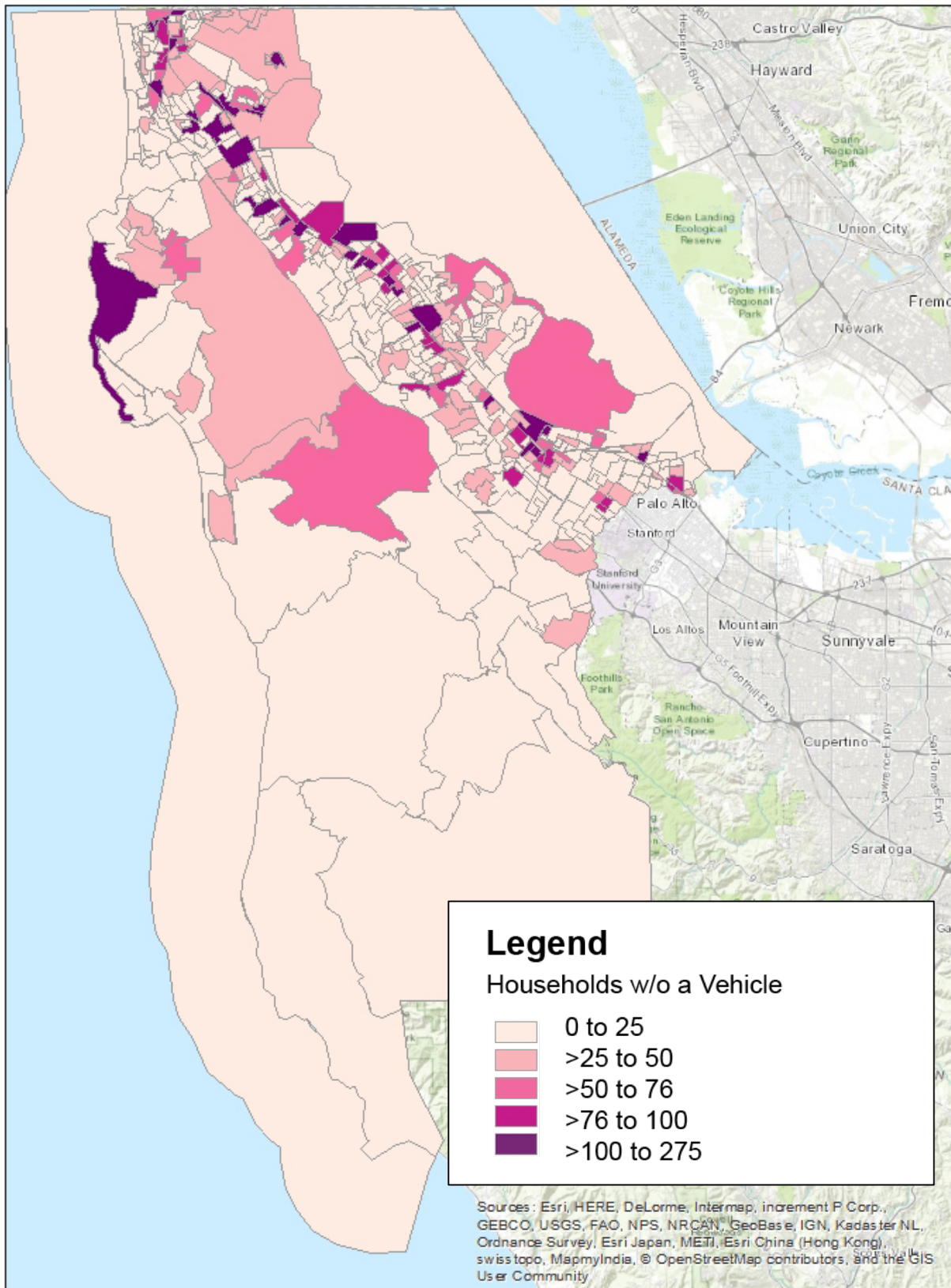
This map shows the population estimates for voting age residents who have a disability. The darker the color, the more individuals in the area that have a disability.





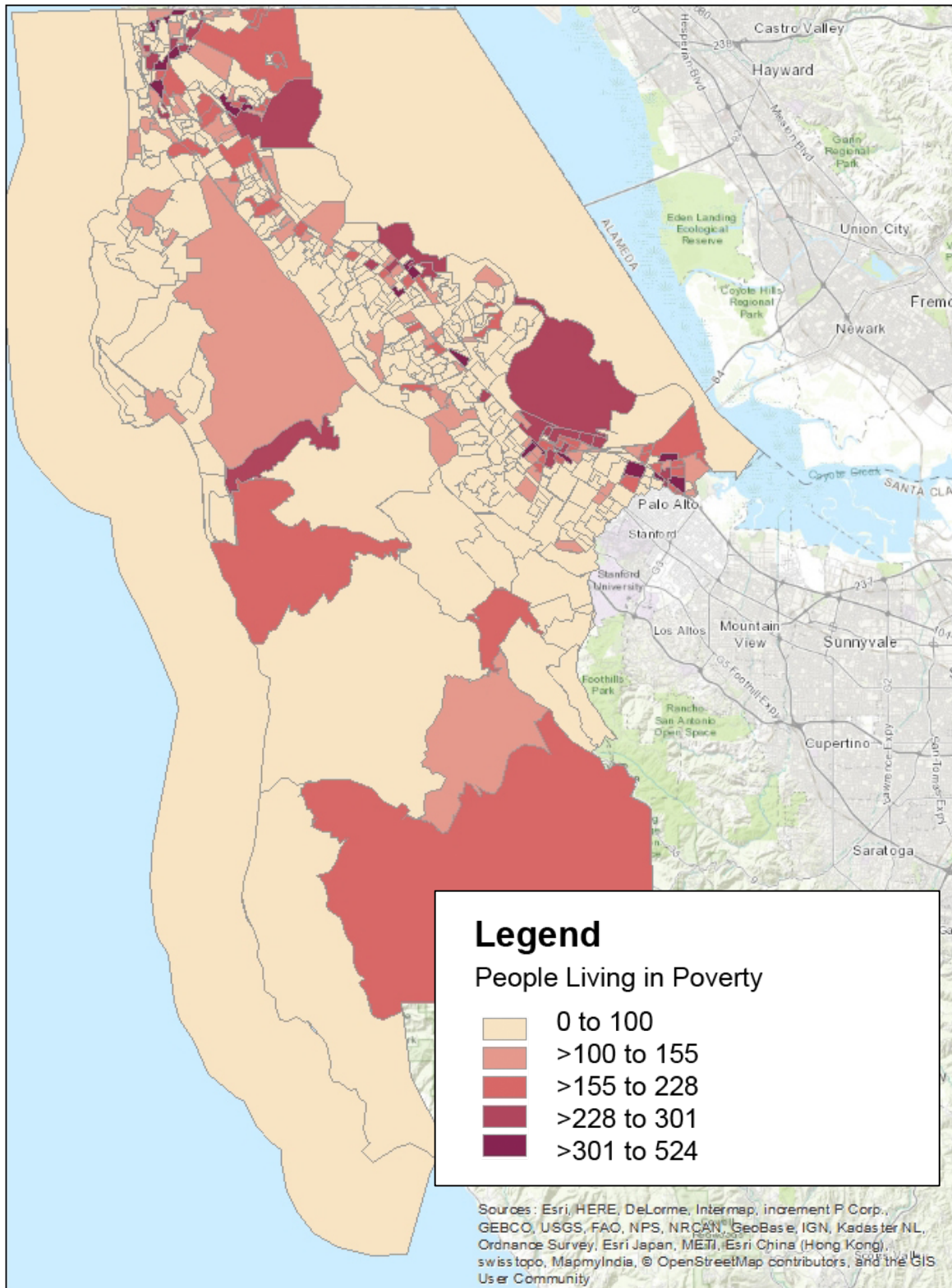
## Household Vehicle Ownership

This map shows households that do not own a vehicle. The darker the color, the more households in the area that do not own a vehicle.



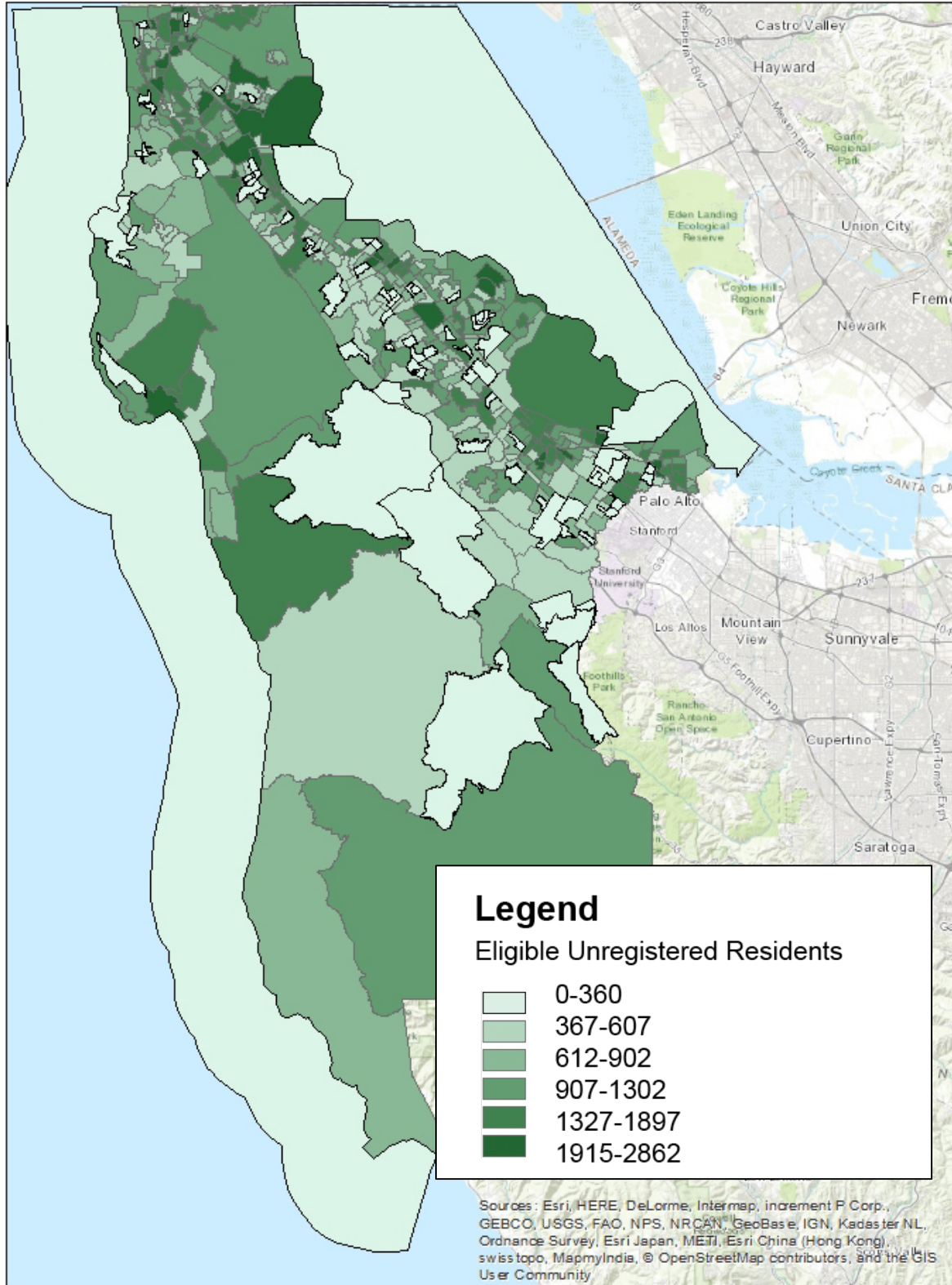
## Areas with Individuals Living in Poverty

This map shows the estimated number of people living in poverty in each area of San Mateo County. The darker color indicates a higher number of people living in poverty.



## Areas with Eligible Residents Who Are Not Yet Registered to Vote

This map shows the number of eligible residents who are not yet registered. The darker color indicates a high number of eligible but unregistered residents.



# CALIFORNIA VOTER'S CHOICE ACT LEGISLATION



**Office of Mark Church**  
**Chief Elections Officer & Assessor-County Clerk-Recorder**

**Legislation**  
**Senate Bill No. 450**  
**CHAPTER 832**

An act to amend Sections 3017 and 15320 of, to add Sections 4005, 4006, and 4007 to, and to add and repeal Section 4008 of, the Elections Code, relating to elections.

[Approved by Governor September 29, 2016. Filed with  
Secretary of State September 29, 2016.]

LEGISLATIVE COUNSEL'S DIGEST

SB 450, Allen. Elections: vote by mail voting and mail ballot elections.

Existing law requires all vote by mail ballots to be voted on or before the day of the election and requires the vote by mail voter to return the ballot by mail or in person, as specified, to the elections official who issued the ballot.

This bill would require an elections official who receives a vote by mail ballot that he or she did not issue to forward that ballot to the elections official who issued the ballot no later than 8 days after receipt. By requiring an elections official to forward a ballot to the elections official who issued the ballot, the bill would impose a state-mandated local program.

Existing law authorizes cities with a population of fewer than 100,000 persons, school districts, and special districts to conduct an all-mailed ballot special election to fill a vacancy on the legislative or governing body of those entities under specified conditions.

This bill, the California Voter's Choice Act, would, on or after January 1, 2018, authorize specified counties, and on or after January 1, 2020, authorize any county except the County of Los Angeles, to conduct any election as an all-mailed ballot election if certain conditions are satisfied, including conditions related to ballot dropoff locations, vote centers, and plans for the administration of all-mailed ballot elections. The bill would require the Secretary of State, within 6 months of each all-mailed ballot election conducted by a county pursuant to these provisions, to report certain information to the Legislature regarding that election. The bill would require the county that conducted the all-mailed ballot election to submit to the Secretary of State the information needed for the Secretary of State to prepare the report.

This bill would, on or after January 1, 2020, authorize the County of Los Angeles to conduct any election as a vote center election if certain conditions are satisfied, including conditions related to ballot dropoff locations and vote centers. The bill would, on or after January 1, 2020, authorize the County of Los Angeles to conduct a special election as an all-mailed ballot election pursuant to specified provisions that apply to every county that chooses to conduct a special election as an all-mailed ballot election.

This bill would also require the Secretary of State to establish a taskforce that includes certain individuals to review all-mailed ballot elections conducted pursuant to these provisions and to provide comments and recommendations to the Legislature within 6 months of each all-mailed ballot election or vote center election.

This bill would incorporate additional changes to Section 3017 of the Elections Code proposed by AB 1921 that would become operative only if AB 1921 and this bill are both chaptered and this bill is chaptered last.

The California Constitution requires the state to reimburse local agencies and school districts for certain costs mandated by the state. Statutory provisions establish procedures for making that reimbursement.

This bill would provide that, if the Commission on State Mandates determines that the bill contains costs mandated by the state, reimbursement for those costs shall be made pursuant to these statutory provisions.

*The people of the State of California do enact as follows:*

SECTION 1. This act shall be known, and may be cited, as the California Voter's Choice Act.

SEC. 2. Section 3017 of the Elections Code is amended to read:

3017. (a) All vote by mail ballots cast under this division shall be voted on or before the day of the election. After marking the ballot, the vote by mail voter shall do any of the following: (1) return the ballot by mail or in person to the elections official who issued the ballot, (2) return the ballot in person to a member of a precinct board at a polling place or vote center within the state, or (3) return the ballot to a vote by mail ballot dropoff location within the state that is provided pursuant to Section 3025 or 4005. However, a vote by mail voter who is unable to return the ballot may designate his or her spouse, child, parent, grandparent, grandchild, brother, sister, or a person residing in the same household as the vote by mail voter to return the ballot to the elections official who issued the ballot, to the precinct board at a polling place or vote center within the state, or to a vote by mail ballot dropoff location within the state that is provided pursuant to Section 3025 or 4005. The ballot must, however, be received by the elections official who issued the ballot, the precinct board, or the vote by mail ballot dropoff location before the close of the polls on election day. If a vote by mail ballot is returned to a precinct board at a polling place or vote center, or to a vote by mail ballot dropoff location, that is located in a county that is not the county of the elections official who issued the ballot, the elections official for the county in which the vote by mail ballot is returned shall forward the ballot to the elections official who issued the ballot no later than eight days after receipt.

(b) The elections official shall establish procedures to ensure the secrecy of a ballot returned to a precinct polling place and the security, confidentiality, and integrity of any personal information collected, stored, or otherwise used pursuant to this section.

(c) On or before March 1, 2008, the elections official shall establish procedures to track and confirm the receipt of voted vote by mail ballots and to make this information available by means of online access using the county's elections division Internet Web site. If the county does not have an elections division Internet Web site, the elections official shall establish a toll-free telephone number that may be used to confirm the date a voted vote by mail ballot was received.

(d) The provisions of this section are mandatory, not directory, and a ballot shall not be counted if it is not delivered in compliance with this section.

(e) Notwithstanding subdivision (a), a vote by mail voter's ballot shall not be returned by a paid or volunteer worker of a general purpose committee, controlled committee, independent expenditure committee, political party, candidate's campaign committee, or any other group or organization at whose behest the individual designated to return the ballot is performing a service. However, this subdivision does not apply to a candidate or a candidate's spouse.

SEC. 2.5. Section 3017 of the Elections Code is amended to read:

3017. (a) All vote by mail ballots cast under this division shall be voted on or before the day of the election. After marking the ballot, the vote by mail voter shall do any of the following: (1) return the ballot by mail or in person to the elections official who issued the ballot, (2) return the ballot in person to a member of a precinct board at a polling place or vote center within the state, or (3) return the ballot to a vote by mail ballot dropoff location within the state that is provided pursuant to Section 3025 or 4005. However, a vote by mail voter who is unable to return the ballot may designate any person to return the ballot to the elections official who issued the ballot, to the precinct board at a polling place or vote center within the state, or to a vote by mail ballot dropoff location within the state that is provided pursuant to Section 3025 or 4005. The ballot must, however, be received by the elections official who issued the ballot, the precinct board, or the vote by mail ballot dropoff location before the close of the polls on election day. If a vote by mail ballot is returned to a precinct board at a polling place or vote center, or to a vote by mail ballot dropoff location, that is located in a county that is not the county of the elections official who issued the ballot, the elections official for the county in which the vote by mail ballot is returned shall forward the ballot to the elections official who issued the ballot no later than eight days after receipt.

(b) The elections official shall establish procedures to ensure the secrecy of a ballot returned to a precinct polling place and the security, confidentiality, and integrity of any personal information collected, stored, or otherwise used pursuant to this section.

(c) On or before March 1, 2008, the elections official shall establish procedures to track and confirm the receipt of voted vote by mail ballots and to make this information available by means of online access using the county's elections division Internet Web site. If the county does not have an elections division Internet Web site, the elections official shall establish a toll-free telephone number that may be used to confirm the date a voted vote by mail ballot was received.

(d) The provisions of this section are mandatory, not directory, and a ballot shall not be counted if it is not delivered in compliance with this section.

(e) (1) A person designated to return a vote by mail ballot shall not receive any form of compensation based on the number of ballots that the person has returned and no individual, group, or organization shall provide compensation on this basis.

(2) For purposes of this paragraph, "compensation" means any form of monetary payment, goods, services, benefits, promises or offers of employment, or any other form of consideration offered to another person in exchange for returning another voter's vote by mail ballot.

(3) Any person in charge of a vote by mail ballot and who knowingly and willingly engages in criminal acts related to that ballot as described in Division 18 (commencing with Section 18000), including, but not limited to, fraud, bribery, intimidation, and tampering with or failing to

deliver the ballot in a timely fashion, is subject to the appropriate punishment specified in that division.

SEC. 3. Section 4005 is added to the Elections Code, to read:

4005. (a) Notwithstanding Section 4000 or any other law, on or after January 1, 2018, the Counties of Calaveras, Inyo, Madera, Napa, Nevada, Orange, Sacramento, San Luis Obispo, San Mateo, Santa Clara, Shasta, Sierra, Sutter, and Tuolumne, and, except as provided in Section 4007, on or after January 1, 2020, any county may conduct any election as an all-mailed ballot election if all of the following apply:

(1) (A) At least two ballot dropoff locations are provided within the jurisdiction where the election is held or the number of ballot dropoff locations are fixed in a manner so that there is at least one ballot dropoff location provided for every 15,000 registered voters within the jurisdiction where the election is held, as determined on the 88th day before the day of the election, whichever results in more ballot dropoff locations. For purposes of this subparagraph, a vote center that includes an exterior ballot drop box counts only as a single ballot dropoff location. Ballot dropoff locations shall comply with the regulations adopted pursuant to subdivision (b) of Section 3025.

(B) A ballot dropoff location provided for under this section consists of a secure, accessible, and locked ballot box located as near as possible to established public transportation routes and that is able to receive voted ballots. All ballot dropoff locations shall be open at least during regular business hours beginning not less than 28 days before the day of the election, and on the day of the election. At least one ballot dropoff location shall be an accessible, secured, exterior drop box that is available for a minimum of 12 hours per day including regular business hours.

(2) (A) The county elections official permits a voter residing in the county to do any of the following at a vote center:

(i) Return, or vote and return, his or her vote by mail ballot.

(ii) Register to vote, update his or her voter registration, and vote pursuant to Section 2170.

(iii) Receive and vote a provisional ballot pursuant to Section 3016 or Article 5 (commencing with Section 14310) of Chapter 3 of Division 14.

(iv) Receive a replacement ballot upon verification that a ballot for the same election has not been received from the voter by the county elections official. If the county elections official is unable to determine if a ballot for the same election has been received from the voter, the county elections official may issue a provisional ballot.

(v) Vote a regular, provisional, or replacement ballot using accessible voting equipment that provides for a private and independent voting experience.

(B) Each vote center shall have at least three voting machines that are accessible to voters with disabilities.

(3) (A) On the day of the election, from 7 a.m. to 8 p.m., inclusive, and on each of the three days before the election, for a minimum of eight hours per day, at least one vote center is provided for every 10,000 registered voters within the jurisdiction where the election is held, as determined on the 88th day before the day of the election. At least 90 percent of the number of vote centers required by this subparagraph shall be open for all four days during the required



times. Up to 10 percent of the number of vote centers required by this subparagraph may be open for less than four days if at least one vote center is provided for every 10,000 registered voters on each day.

(B) Notwithstanding subparagraph (A), for a jurisdiction with fewer than 20,000 registered voters, a minimum of two voter centers are provided on the day of the election and on each of the three days before the election within the jurisdiction where the election is held.

(4) (A) Beginning 10 days before the day of the election and continuing daily up to and including the fourth day before the election, for a minimum of eight hours per day, at least one vote center is provided for every 50,000 registered voters within the jurisdiction where the election is held, as determined on the 88th day before the day of the election.

(B) Notwithstanding subparagraph (A), for a jurisdiction with fewer than 50,000 registered voters, a minimum of two vote centers are provided within the jurisdiction where the election is held.

(C) The vote centers provided under this section are established in accordance with the accessibility requirements described in Article 5 (commencing with Section 12280) of Chapter 3 of Division 12, the federal Americans with Disabilities Act of 1990 (42 U.S.C. Sec. 12101 et seq.), the federal Help America Vote Act of 2002 (52 U.S.C. Sec. 20901 et seq.), and the federal Voting Rights Act of 1965 (52 U.S.C. Sec. 10101 et seq.).

(D) The vote centers provided under this section are equitably distributed across the county so as to afford maximally convenient options for voters and are established at accessible locations as near as possible to established public transportation routes. The vote centers shall be equipped with voting units or systems that are accessible to individuals with disabilities and that provide the same opportunity for access and participation as is provided to voters who are not disabled, including the ability to vote privately and independently in accordance with Sections 12280 and 19240.

(E) (i) The vote centers provided under this section have an electronic mechanism for the county elections official to immediately access, at a minimum, all of the following voter registration data:

(I) Name.

(II) Address.

(III) Date of birth.

(IV) Language preference.

(V) Party preference.

(VI) Precinct.

(VII) Whether or not the voter has been issued a vote by mail ballot and whether or not a ballot has been received by the county elections official.

(ii) The electronic mechanism used to access voter registration data shall not be connected in any way to a voting system.

(5) A method is available for voters with disabilities to request and receive a blank vote by mail ballot and, if a replacement ballot is necessary, a blank replacement ballot that voters with

disabilities can read and mark privately and independently pursuant to the federal Help America Vote Act of 2002 (52 U.S.C. Sec. 20901 et seq.).

(6) (A) Except as otherwise provided for in this section, election boards for the vote centers established under this section meet the requirements for eligibility and composition pursuant to Article 1 (commencing with Section 12300) of Chapter 4 of Division 12.

(B) Each vote center provides language assistance in all languages required in the jurisdiction under subdivision (c) of Section 12303 or Section 203 of the federal Voting Rights Act of 1965 (52 U.S.C. Sec. 10101 et seq.) in a manner that enables voters of the applicable language minority groups to participate effectively in the electoral process. Each vote center shall post information regarding the availability of language assistance in English and all other languages for which language assistance is required to be provided in the jurisdiction under subdivision (c) of Section 12303 or Section 203 of the federal Voting Rights Act of 1965 (52 U.S.C. Sec. 10101 et seq.).

(i) If a vote center is located in, or adjacent to, a precinct, census tract, or other defined geographical subsection required to establish language requirements under subdivision (c) of Section 12303 or Section 203 of the federal Voting Rights Act of 1965 (52 U.S.C. Sec. 10101 et seq.), or if it is identified as needing language assistance through the public input process described in clause (ii), the county elections official shall ensure that the vote center is staffed by election board members who speak the required language. If the county elections official is unable to recruit election board members who speak the required language, alternative methods of effective language assistance shall be provided by the county elections official.

(ii) The county elections official shall solicit public input regarding which vote centers should be staffed by election board members who are fluent in a language in addition to English pursuant to subdivision (c) of Section 12303 and Section 203 of the federal Voting Rights Act of 1965 (52 U.S.C. Sec. 10101 et seq.).

(iii) The county elections official shall provide notice in the sample ballot, in vote by mail materials, and on his or her Internet Web site of the specific language services available at each vote center.

(C) Each vote center provides election materials translated in all languages required in the jurisdiction under subdivision (c) of Section 14201 and Section 203 of the federal Voting Rights Act of 1965 (52 U.S.C. Sec. 10101 et seq.).

(D) Each vote center provides reasonable modifications and auxiliary aids and services as required by the federal Americans with Disabilities Act of 1990 (42 U.S.C. Sec. 12101 et seq.) and the federal Rehabilitation Act of 1973 (29 U.S.C. Sec. 701 et seq.).

(7) (A) Beginning 10 days before the election, the county elections official maintains, in an electronic format, an index of voters who have done any of the following at one of the voter centers established pursuant to this section:

(i) Registered to vote or updated his or her voter registration.

(ii) Received and voted a provisional ballot or replacement ballot.

(iii) Voted a ballot using equipment at the vote center.

(B) The index required by subparagraph (A) includes the same information for each voter as is required to be included on copies of the index of affidavits of voter registration that are posted

pursuant to Section 14294. The index required by subparagraph (A) shall be updated continuously during any time that a vote center is open in the jurisdiction.

(8) (A) Beginning 29 days before the day of the election, the county elections official mails to each registered voter a vote by mail ballot packet that includes a return envelope with instructions for the use and return of the vote by mail ballot.

(B) The county elections official delivers to each voter, with either the sample ballot sent pursuant to Section 13303 or with the vote by mail ballot packet, all of the following:

(i) A notice, translated in all languages required under subdivision (c) of Section 14201 and Section 203 of the federal Voting Rights Act of 1965 (52 U.S.C. Sec. 10101 et seq.), that informs voters of all of the following:

(I) An all-mailed ballot election is being conducted and each eligible voter will be issued a vote by mail ballot by mail.

(II) The voter may cast a vote by mail ballot in person at a vote center during the times and days specified in subparagraph (A) of paragraph (4) or on election day.

(III) No later than seven days before the day of the election, the voter may request the county elections official to send a vote by mail ballot in a language other than English pursuant to Section 203 of the federal Voting Rights Act of 1965 (52 U.S.C. Sec. 10101 et seq.) or a facsimile copy of the ballot printed in a language other than English pursuant to Section 14201.

(IV) No later than seven days before the day of the election, the voter may request the county elections official to send or deliver a ballot that voters with disabilities can read and mark privately and independently pursuant to the federal Help America Vote Act of 2002 (52 U.S.C. Sec. 20901 et seq.).

(ii) A list of the ballot dropoff locations and vote centers established pursuant to this section, including the dates and hours they are open. The list shall also be posted on the Internet Web site of the county elections official in a format that is accessible for people with disabilities pursuant to Section 11135 of the Government Code.

(iii) A postage-paid postcard that the voter may return to the county elections official for the purpose of requesting a vote by mail ballot in a language other than English or for the purpose of requesting a vote by mail ballot in an accessible format.

(C) Upon request, the county elections official provides written voting materials to voters with disabilities in an accessible format, as required by the federal Americans with Disabilities Act of 1990 (42 U.S.C. Sec. 12101 et seq.) and the federal Rehabilitation Act of 1973 (29 U.S.C. Sec. 701 et seq.).

(9) (A) The county elections official establishes a language accessibility advisory committee that is comprised of representatives of language minority communities. The committee shall be established no later than October 1 of the year before the first election conducted pursuant to this section. The committee shall hold its first meeting no later than April 1 of the year in which the first election is conducted pursuant to this section.

(B) The county elections official establishes a voting accessibility advisory committee that is comprised of voters with disabilities. The committee shall be established no later than October 1 of the year before the first election conducted pursuant to this section. The committee shall

hold its first meeting no later than April 1 of the year in which the first election is conducted pursuant to this section.

(C) A county with fewer than 50,000 registered voters may establish a joint advisory committee for language minority communities and voters with disabilities.

(10) (A) The county elections official develops a draft plan for the administration of elections conducted pursuant to this section in consultation with the public, including both of the following:

(i) One meeting, publicly noticed at least 10 days in advance of the meeting, that includes representatives, advocates, and other stakeholders representing each community for which the county is required to provide voting materials and assistance in a language other than English under subdivision (c) of Section 14201 and the federal Voting Rights Act of 1965 (52 U.S.C. Sec. 10101 et seq.).

(ii) One meeting, publicly noticed at least 10 days in advance of the meeting, that includes representatives from the disability community and community organizations and individuals that advocate on behalf of, or provide services to, individuals with disabilities.

(B) The county elections official, when developing the draft plan for the administration of elections conducted pursuant to this section, considers, at a minimum, all of the following:

(i) Vote center and ballot dropoff location proximity to public transportation.

(ii) Vote center and ballot dropoff location proximity to communities with historically low vote by mail usage.

(iii) Vote center and ballot dropoff location proximity to population centers.

(iv) Vote center and ballot dropoff location proximity to language minority communities.

(v) Vote center and ballot dropoff location proximity to voters with disabilities.

(vi) Vote center and ballot dropoff location proximity to communities with low rates of household vehicle ownership.

(vii) Vote center and ballot dropoff location proximity to low-income communities.

(viii) Vote center and ballot dropoff location proximity to communities of eligible voters who are not registered to vote and may need access to same day voter registration.

(ix) Vote center and ballot dropoff location proximity to geographically isolated populations, including Native American reservations.

(x) Access to accessible and free parking at vote centers and ballot dropoff locations.

(xi) The distance and time a voter must travel by car or public transportation to a vote center and ballot dropoff location.

(xii) The need for alternate methods for voters with disabilities for whom vote by mail ballots are not accessible to cast a ballot.

(xiii) Traffic patterns near vote centers and ballot dropoff locations.

(xiv) The need for mobile vote centers in addition to the number of vote centers established pursuant to this section.

(C) The county elections official publicly notices the draft plan for the administration of elections conducted pursuant to this section and accepts public comments on the draft plan for at least 14 days before the hearing held pursuant to subparagraph (D).

(D) (i) Following the 14-day review period required by subparagraph (C), the county elections official holds a public meeting to consider the draft plan for the administration of elections conducted pursuant to this section and to accept public comments. The meeting shall be publicly noticed at least 10 days in advance of the meeting on the Internet Web sites of the clerk of the county board of supervisors and the county elections official, or, if neither the clerk of the county board of supervisors nor the county elections official maintain an Internet Web site, in the office of the county elections official.

(ii) After the public hearing to consider the draft plan for the administration of elections conducted pursuant to this section and to accept public comments, the county elections official shall consider any public comments he or she receives from the public and shall amend the draft plan in response to the public comments to the extent he or she deems appropriate. The county elections official shall publicly notice the amended draft plan and shall accept public comments on the amended draft plan for at least 14 days before the county elections official may adopt the amended draft plan pursuant to subparagraph (E).

(E) (i) Following the 14-day review and comment period required by clause (ii) of subparagraph (D), the county elections official may adopt a final plan for the administration of elections conducted pursuant to this section, and shall submit the voter education and outreach plan that is required by clause (i) of subparagraph (I) to the Secretary of State for approval.

(ii) The Secretary of State shall approve, approve with modifications, or reject a voter education and outreach plan submitted pursuant to clause (i) of subparagraph (I) within 14 days after the plan is submitted by the county elections official.

(iii) The draft plan, the amended draft plan, and the adopted final plan for the administration of elections conducted pursuant to this section shall be posted on the Internet Web site of the county elections official in each language in which the county is required to provide voting materials and assistance under subdivision (c) of Section 14201 and the federal Voting Rights Act of 1965 (52 U.S.C. Sec. 10101 et seq.), and the Secretary of State's Internet Web site in a format that is accessible for people with disabilities pursuant to Section 11135 of the Government Code.

(F) Public meetings held pursuant to this paragraph shall, upon request, provide auxiliary aids and services to ensure effective communication with people with disabilities.

(G) Within two years of the adoption of the first plan for the administration of elections conducted pursuant to this section, the county elections official shall hold public meetings in accordance with the procedures described in subparagraphs (C) to (F), inclusive, to consider revising the first plan for the administration of elections conducted pursuant to this section. Every four years thereafter, the county elections official shall hold public meetings in accordance with the procedures described in subparagraphs (C) to (F), inclusive, to consider revising the plan for the administration of elections conducted pursuant to this section.

(H) (i) With reasonable public notification, a county elections official may amend a plan for the administration of elections conducted pursuant to this section no more than 120 days before the date of an election held pursuant to this section.

(ii) With reasonable public notification, a county elections official may amend a plan for the administration of elections conducted pursuant to this section more than 120 days before the date of an election held pursuant to this section if he or she provides at least 30 days to accept public comments on the amended plan.

(l) The plan for the administration of elections conducted pursuant to this section, includes all of the following:

(i) A voter education and outreach plan that is approved by the Secretary of State and that includes all of the following:

(I) A description of how the county elections official will use the media, including social media, newspapers, radio, and television that serve language minority communities for purposes of informing voters of the upcoming election and promoting the toll-free voter assistance hotline.

(II) A description of how the county elections official will use the media, including social media, newspapers, radio, and television for purposes of informing voters of the availability of a vote by mail ballot in an accessible format and the process for requesting such a ballot.

(III) A description of how the county elections official will have a community presence to educate voters regarding the provisions of this section.

(IV) A description of the accessible information that will be publicly available on the accessible Internet Web site of the county elections official.

(V) A description of the method used by the county elections official to identify language minority voters.

(VI) A description of how the county elections official will educate and communicate the provisions of this section to the public, including:

(ia) Communities for which the county is required to provide voting materials and assistance in a language other than English under subdivision (c) of Section 14201 and the federal Voting Rights Act of 1965 (52 U.S.C. Sec. 10101 et seq.). The county elections official shall hold at least one bilingual voter education workshop for each language in which the county is required to provide voting materials and assistance in a language other than English under subdivision (c) of Section 14201 and the federal Voting Rights Act of 1965 (52 U.S.C. Sec. 10101 et seq.).

(ib) The disability community, including organizations and individuals that advocate on behalf of, or provide services to, individuals with disabilities. The county elections official shall hold at least one voter education workshop to increase accessibility and participation of eligible voters with disabilities.

(VII) A description of how the county will spend the necessary resources on voter education and outreach to ensure that voters are fully informed about the election. This description shall include information about the amount of money the county plans to spend on voter education and outreach activities under the plan, and how that compares to the amount of money spent on voter education and outreach in recent similar elections in the same jurisdiction that were not conducted pursuant to this section.

(VIII) At least one public service announcement in the media, including newspapers, radio, and television, that serve English-speaking citizens for purposes of informing voters of the upcoming election and promoting the toll-free voter assistance hotline. Outreach made under

this subclause shall include access for voters who are deaf or hard of hearing and voters who are blind or visually impaired.

(IX) At least one public service announcement in the media, including newspapers, radio, and television, that serve non-English-speaking citizens for each language in which the county is required to provide voting materials and assistance under subdivision (c) of Section 14201 and the federal Voting Rights Act of 1965 (52 U.S.C. Sec. 10101 et seq.) for purposes of informing voters of the upcoming election and promoting the toll-free voter assistance hotline.

(X) At least two direct contacts with voters for purposes of informing voters of the upcoming election and promoting the toll-free voter assistance hotline. The two direct contacts are in addition to any other required contacts including, but not limited to, sample ballots and the delivery of vote by mail ballots.

(ii) A description of how a voter with disabilities may request and receive a blank vote by mail ballot and, if a replacement ballot is necessary, a blank replacement ballot that a voter with disabilities can mark privately and independently.

(iii) A description of how the county elections official will address significant disparities in voter accessibility and participation identified in the report required by subdivision (g).

(iv) A description of the methods and standards that the county elections official will use to ensure the security of voting conducted at vote centers.

(v) Information about estimated short-term and long-term costs and savings from conducting elections pursuant to this section as compared to recent similar elections in the same jurisdiction that were not conducted pursuant to this section.

(vi) To the extent available at the time of publication, information on all of the following:

(I) The total number of vote centers to be established.

(II) The total number of ballot dropoff locations to be established.

(III) The location of each vote center.

(IV) The location of each ballot dropoff location and whether it is inside or outside.

(V) A map of the locations of each vote center and ballot dropoff location.

(VI) The hours of operation for each vote center.

(VII) The hours of operation for each ballot dropoff location.

(VIII) The security and contingency plans that would be implemented by the county elections official to do both of the following:

(ia) Prevent a disruption of the vote center process.

(ib) Ensure that the election is properly conducted if a disruption occurs.

(IX) The number of election board members and the number of bilingual election board members and the languages spoken.

(X) The services provided to voters with disabilities, including, but not limited to, the type and number of accessible voting machines and reasonable modifications at each vote center.

(XI) The design, layout, and placement of equipment inside each voter center that protects each voter's right to cast a private and independent ballot.

(vii) A toll-free voter assistance hotline that is accessible to voters who are deaf or hard of hearing, and that is maintained by the county elections official that is operational no later than 29 days before the day of the election until 5 p.m. on the day after the election. The toll-free voter assistance hotline shall provide assistance to voters in all languages in which the county is required to provide voting materials and assistance under subdivision (c) of Section 14201 and the federal Voting Rights Act of 1965 (52 U.S.C. Sec. 10101 et seq.).

(J) The plan for the administration of elections conducted pursuant to this section is posted in a format that is accessible to persons with disabilities on the Internet Web site of the Secretary of State and on the Internet Web site of the county elections official.

(b) Notwithstanding Section 4000 or any other law, on or after January 1, 2018, the Counties of Calaveras, Inyo, Madera, Napa, Nevada, Orange, Sacramento, San Luis Obispo, San Mateo, Santa Clara, Shasta, Sierra, Sutter, and Tuolumne, and on or after January 1, 2020, any county may conduct a special election as an all-mailed ballot election under this section if all of the following apply:

(1) The county elections official has done either of the following:

(A) Previously conducted an election as an all-mailed ballot election in accordance with subdivision (a).

(B) Adopted a final plan for the administration of elections pursuant to clause (i) of subparagraph (E) of paragraph (9) of subdivision (a), in which case the county elections official shall complete all activities provided for in the voter education and outreach plan that is required by clause (i) of subparagraph (I) of paragraph (9) of subdivision (a) before the day of the special election.

(2) (A) On the day of election, from 7 a.m. to 8 p.m., inclusive, at least one vote center is provided for every 30,000 registered voters. If the jurisdiction is not wholly contained within the county, the county elections official shall make a reasonable effort to establish a vote center within the jurisdiction where the special election is held.

(B) Notwithstanding subparagraph (A), for a jurisdiction with fewer than 30,000 registered voters, the county elections official makes a reasonable effort to establish a vote center.

(3) (A) Not less than 10 days before the day of the election, for a minimum of eight hours per day, at least one vote center is provided for every 60,000 registered voters. If the jurisdiction is not wholly contained within the county, the county elections official shall make a reasonable effort to establish a vote center within the jurisdiction where the special election is held.

(B) Notwithstanding subparagraph (A), for a jurisdiction with fewer than 30,000 registered voters, the county elections official makes a reasonable effort to establish a vote center.

(4) (A) At least one ballot dropoff location is provided for every 15,000 registered voters. At least one ballot dropoff location shall be located within the jurisdiction where the special election is held. All ballot dropoff locations shall be open at least during regular business hours beginning not less than 28 days before the day of the election, and on the day of the election.

(B) Notwithstanding subparagraph (A), for a jurisdiction with fewer than 15,000 registered voters, at least one ballot dropoff location shall be provided.



(c) Except as otherwise provided in this section, the election day procedures shall be conducted in accordance with Division 14 (commencing with Section 14000).

(d) The county elections official may provide, at his or her discretion, additional ballot dropoff locations and vote centers for purposes of this section.

(e) The return of voted vote by mail ballots is subject to Sections 3017 and 3020.

(f) For the sole purpose of reporting the results of an election conducted pursuant to this section, upon completion of the ballot count, the county elections official shall divide the jurisdiction into precincts pursuant to Article 2 (commencing with Section 12220) of Chapter 3 of Division 12 and shall prepare a statement of the results of the election in accordance with Sections 15373 and 15374.

(g) (1) (A) Within six months of each election conducted pursuant to this section or Section 4007, the Secretary of State shall report to the Legislature, to the extent possible, all of the following information by categories of race, ethnicity, language preference, age, gender, disability, permanent vote by mail status, historical polling place voters, political party affiliation, and language minorities as it relates to the languages required under subdivision (c) of Section 14201 and Section 203 of the federal Voting Rights Act of 1965 (52 U.S.C. Sec. 10101 et seq.):

(i) Voter turnout.

(ii) Voter registration.

(iii) Ballot rejection rates.

(iv) Reasons for ballot rejection.

(v) Provisional ballot use.

(vi) Accessible vote by mail ballot use.

(vii) The number of votes cast at each vote center.

(viii) The number of ballots returned at ballot dropoff locations.

(ix) The number of ballots returned by mail.

(x) The number of persons who registered to vote at a vote center.

(xi) Instances of voter fraud.

(xii) Any other problems that became known to the county elections official or the Secretary of State during the election or canvass.

(B) The report required by subparagraph (A) shall be posted on the Internet Web site of the Secretary of State in a format that is accessible for people with disabilities pursuant to Section 11135 of the Government Code.

(C) The report required by subparagraph (A) shall be submitted to the Legislature in compliance with Section 9795 of the Government Code.

(D) If an election is conducted pursuant to this section, the county shall submit, to the extent possible, to the Secretary of State the information needed for the Secretary of State to prepare the report required by subparagraph (A).

(2) The county elections official shall post on his or her Internet Web site a report that compares the cost of elections conducted pursuant to this section to the costs of previous elections. The report shall be posted in a format that is accessible for people with disabilities pursuant to Section 11135 of the Government Code.

(h) The Secretary of State shall enforce the provisions of this section pursuant to Section 12172.5 of the Government Code.

(i) For purposes of this section, "disability" has the same meaning as defined in subdivisions (j), (m), and (n) of Section 12926 of the Government Code.

SEC. 4. Section 4006 is added to the Elections Code, to read:

4006. For any election conducted pursuant to Section 4005, the county elections official shall make a reasonable effort to inform a voter of either of the following:

(a) If the voter's vote by mail ballot envelope is missing a signature.

(b) How the voter can correct the missing signature.

SEC. 5. Section 4007 is added to the Elections Code, to read:

4007. (a) On or after January 1, 2020, the County of Los Angeles may conduct any election as a vote center election if all of the following apply:

(1) The county elections official complies with all the provisions of subdivision (a) of Section 4005 that are not inconsistent with this section.

(2) Every permanent vote by mail voter receives a ballot.

(3) At least two ballot dropoff locations are provided within the jurisdiction where the election is held or the number of ballot dropoff locations are fixed in a manner so that there is at least one ballot dropoff location provided for every 15,000 permanent vote by mail registered voters within the jurisdiction where the election is held, as determined on the 88th day before the day of the election, whichever results in more ballot dropoff locations.

(4) Within the jurisdiction where the election is held, at least one vote center is provided for each city that has at least 1,000 registered voters according to the official report of registration submitted by the county elections official to the Secretary of State before the last general election.

(5) On the day of the election, from 7 a.m. to 8 p.m., inclusive, and on each of the three days before the election, for a minimum of eight hours per day, at least one vote center is provided for every 7,500 registered voters within the jurisdiction where the election is held, as determined on the 88th day before the day of the election. At least 90 percent of the number of vote centers required by this subparagraph shall be open for all four days during the required times. Up to 10 percent of the number of vote centers required by this subparagraph may be open for less than four days if at least one vote center is provided for every 7,500 registered voters on each day.

(6) Beginning 10 days before the day of the election and continuing up to and including the fourth day before the day of the election, for a minimum of eight hours per day, at least one vote center is provided for every 30,000 registered voters within the jurisdiction where the election is held, as determined on the 88th day before the election.

(7) Precincts with fewer than 500 registered voters are designated as all vote-by-mail ballot precincts.

(8) Voters residing in a legislative or congressional district that lies partially within the County of Los Angeles and that also lies within another county that is conducting an election pursuant to subdivision (a) of Section 4005 receive a vote by mail ballot if they are eligible to vote in that election.

(9) Voters in a precinct that is either more than a 30 minute travel time from a vote center or in which the polling place in the most recent statewide general election is more than 15 miles from the nearest vote center are mailed a vote by mail ballot.

(10) The vote centers are located within a reasonable travel time of registered voters.

(11) The county elections official conducts a service area analysis of the vote center plans, identifies services gaps, and publicly reports those findings.

(b) Notwithstanding Section 4000 or any other law, on or after January 1, 2020, the County of Los Angeles may conduct a special election as an all-mailed ballot election pursuant to subdivision (b) of Section 4005.

(c) No later than four years after conducting the first vote center election pursuant to this section, the County of Los Angeles may conduct all-mailed ballot elections pursuant to Section 4005 and shall not conduct vote center elections pursuant to this section.

SEC. 6. Section 4008 is added to the Elections Code, to read:

4008. (a) The Secretary of State shall establish a taskforce that includes representatives of all of the following:

(1) County elections officials.

(2) Individuals with demonstrated language accessibility experience for languages covered under the federal Voting Rights Act of 1965 (52 U.S.C. Sec. 10101 et seq.).

(3) The disability community and community organizations and individuals that advocate on behalf of, or provide services to, individuals with disabilities.

(4) Experts with demonstrated experience in the field of elections.

(b) The taskforce shall review elections conducted pursuant to Section 4005 or 4007 and provide comments and recommendations to the Legislature within six months of each election conducted pursuant to Section 4005 or 4007.

(c) This section shall remain in effect only until January 1, 2022, and as of that date is repealed, unless a later enacted statute, that is enacted before January 1, 2022, deletes or extends that date.

SEC. 7. Section 15320 of the Elections Code is amended to read:

15320. Vote by mail ballots and mail ballot precinct ballots returned to the elections office and to the polls on election day that are not included in the semifinal official canvass phase of the election, including any ballots returned to another jurisdiction in the state and forwarded to the elections official who issued the ballot pursuant to Section 3017, shall be processed and counted during the official canvass in the manner prescribed by Chapter 2 (commencing with Section 15100) and pursuant to the requirements of Section 3019.

SEC. 8. Section 2.5 of this bill incorporates amendments to Section 3017 of the Elections Code proposed by both this bill and Assembly Bill 1921. It shall only become operative if (1) both bills are enacted and become effective on or before January 1, 2017, (2) each bill amends Section 3017 of the Elections Code, and (3) this bill is enacted after Assembly Bill 1921, in which case Section 2 of this bill shall not become operative.

SEC. 9. If the Commission on State Mandates determines that this act contains costs mandated by the state, reimbursement to local agencies and school districts for those costs shall be made pursuant to Part 7 (commencing with Section 17500) of Division 4 of Title 2 of the Government Code.